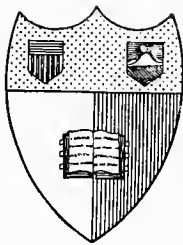


10
1000 1000
1000

7342
Y2



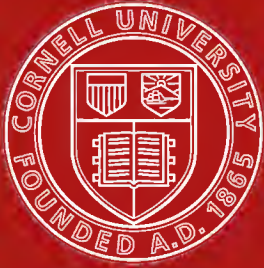
Cornell University

Ithaca, New York

COLLEGE OF ARCHITECTURE

LIBRARY

.....Willard D. Straight.....



Cornell University Library

The original of this book is in
the Cornell University Library.

There are no known copyright restrictions in
the United States on the use of the text.

<http://www.archive.org/details/cu31924020545624>

Oriental Art Treasures
from the
Chinese Imperial
Palace



AMERICAN ART GALLERIES

MADISON SQUARE SOUTH

NEW YORK

N 7342

Y₂

Cornell University

Library

OF THE

College of Architecture

Gift of W.D. Straight C.U.'01

4842

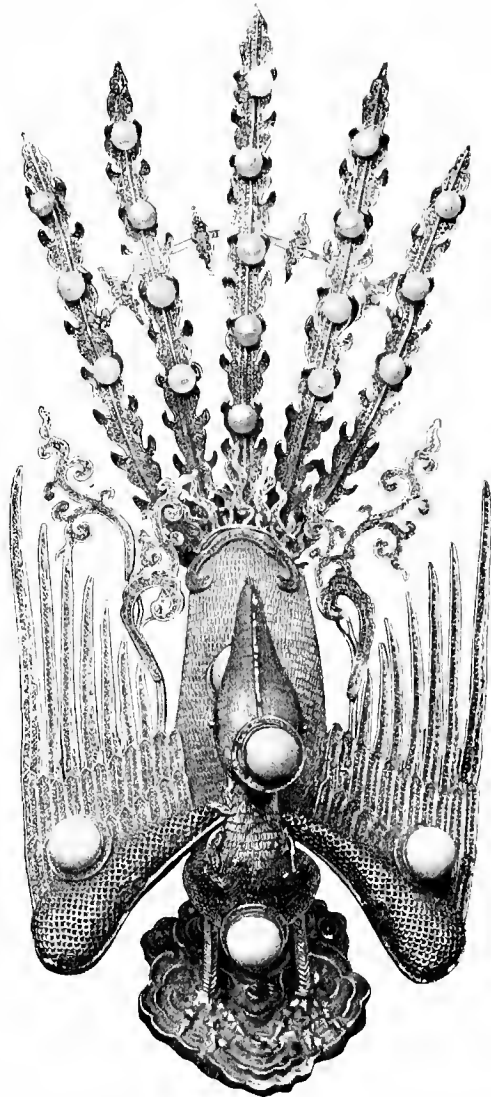
ON FREE PUBLIC VIEW
AT THE AMERICAN ART GALLERIES
MADISON SQUARE SOUTH, NEW YORK
BEGINNING SATURDAY, JANUARY 20th, 1917
AND CONTINUING UNTIL THE DATE OF SALE

ART TREASURES
FROM THE
IMPERIAL PALACE
PEKIN

TO BE SOLD BY DIRECTION OF
MESSRS. YAMANAKA & COMPANY
AT UNRESTRICTED PUBLIC SALE
AT THE AMERICAN ART GALLERIES
ON FRIDAY AND SATURDAY AFTERNOONS
JANUARY 26th AND 27th, 1917
BEGINNING AT 2.30 O'CLOCK

Ar. 670

Property of
College of Architecture,
Cornell University.



No. 55—EMPRESS'S CROWN ORNAMENT

ILLUSTRATED CATALOGUE
OF THE
FURNITURE AND EMBELLISHMENTS
FROM THE
IMPERIAL PALACE
PEKIN

EXQUISITELY WROUGHT GOLD ORNAMENTS FROM
THE CEREMONIAL CROWNS OF THE
FORMER EMPEROR AND EMPRESS OF CHINA
AND NUMEROUS OTHER OBJECTS OF
ANTIQUITY AND DISTINCTIVE ARTISTIC EXCELLENCE

RECENTLY ACQUIRED BY THE FIRM OF
MESSRS. YAMANAKA & COMPANY
NEW YORK JAPAN CHINA

TO BE SOLD AT UNRESTRICTED PUBLIC SALE
ON THE AFTERNOONS HEREIN STATED

THE SALE WILL BE CONDUCTED BY
MR. THOMAS E. KIRBY
AND HIS ASSISTANT, MR. OTTO BERNET, OF
THE AMERICAN ART ASSOCIATION, MANAGERS
NEW YORK

1917
E.V.



**THE AMERICAN ART ASSOCIATION
DESIGNS ITS CATALOGUES AND DIRECTS
ALL DETAILS OF ILLUSTRATION
TEXT AND TYPOGRAPHY**

A SMALL COLLECTION OF DIVERSIFIED INTEREST

Nothing could be farther from the routine of art collections formed for the auction market than the successive aggregations, be they small or large, brought together and offered with the succeeding years by the Messrs. Yamanaka & Company to lovers and admirers of Oriental art in New York and its tributaries—the substantial communities of the wide United States. And the recognition of the fact has been spontaneous and continuous, so much so that an inclusive range of friends await each season with confident hope the display to which they look forward. The knowledge has spread itself—I think it has not before been commented on—that these sales are never “stock riddances” but invariably offerings which the purveyors are able to put forward with the assured belief that they will afford artistic pleasure to spectators, collectors, and thoughtful decorators and furnishers of the home alike. For the Yamanakas have a varied corps of searchers at work in the Orient throughout the year, aside from the annual visits made to China by New York representatives and members of the home house in Japan.

One of the striking exhibits of the present collection is a series of pure gold ornaments of the Imperial Crowns—those of both Emperor and Empress—disposed of by the Imperial family last spring. Should one contemplate, after lifting these finely spun and jeweled fabrics of the precious metal, sharing for an evening the onerous burden which imperialism thus exemplified incurs, one would readily agree that uneasy lies the head that wears a crown. But the imaginative might conceive of a single one of these golden phoenixes from the Empress’s crown as a stunning tiara on a tall American princess, a sovereign of her people, on certain occasions.

In beauty and softness of color some of the imperial brocades, some of the velvets and embroideries, and in color and design

some of the tapestries, here found, are remarkable. There are some very choice Chinese rugs included. Among the brocades are a set of decorations used in the Buddha room of the Imperial Palace. A number of pieces of furniture were made or redecorated after Ch'ien-lung originals, for the palace, at a time of renovation some years ago.

A few choice porcelains are found, some jade and ivory inlaid table screens and panels, fish bowls and very large jardinières, and numerous jade flowers, some of imperial Ch'ien-lung production.

DANA H. CARROLL.

New York, January, 1917.

CONDITIONS OF SALE

1. **Any bid** which is merely a nominal or fractional advance may be rejected by the auctioneer, if, in his judgment, such bid would be likely to affect the sale injuriously.

2. **The highest bidder** shall be the buyer, and if any dispute arise between two or more bidders, the auctioneer shall either decide the same or put up for re-sale the lot so in dispute.

3. **Payment** shall be made of all or such part of the purchase money as may be required, and the names and addresses of the purchasers shall be given immediately on the sale of every lot, in default of which the lot so purchased shall be immediately put up again and re-sold.

Payment of that part of the purchase money not made at the time of sale shall be made within ten days thereafter, in default of which the undersigned may either continue to hold the lots at the risk of the purchaser and take such action as may be necessary for the enforcement of the sale, or may at public or private sale, and without other than this notice, re-sell the lots for the benefit of such purchaser, and the deficiency (if any) arising from such re-sale shall be a charge against such purchaser.

4. **Delivery** of any purchase will be made only upon payment of the total amount due for all purchases at the sale.

Deliveries will be made on sales days between the hours of 9 A. M. and 1 P. M., and on other days—except holidays—between the hours of 9 A. M. and 5 P. M.

Delivery of any purchase will be made only at the American Art Galleries, or other place of sale, as the case may be, and only on presenting the bill of purchase.

Delivery may be made, at the discretion of the Association, of any purchase during the session of the sale at which it was sold.

5. **Shipping**, boxing or wrapping of purchases is a business in which the Association is in no wise engaged, and will not be performed by the Association for purchasers. The Association will, however, afford to purchasers every facility for employing at current and reasonable rates carriers and packers; doing so, however, without any assumption of responsibility on its part for the acts and charges of the parties engaged for such service.

6. **Storage** of any purchase shall be at the sole risk of the purchaser. Title passes upon the fall of the auctioneer's hammer, and thereafter, while the Association will exercise due caution in caring for and delivering such purchase, it will not hold itself responsible if such purchase be lost, stolen, damaged or destroyed.

Storage charges will be made upon all purchases not removed within ten days from the date of the sale thereof.

7. **Guarantee** is not made either by the owner or the Association of the correctness of the description, genuineness or authenticity of any lot, and no sale will be set aside on account of any incorrectness, error of cataloguing, or any imperfection not noted. Every lot is on public exhibition one or more days prior to its sale, after which it is sold "as is" and without recourse.

The Association exercises great care to catalogue every lot correctly, and will give consideration to the opinion of any trustworthy expert to the effect that any lot has been incorrectly catalogued, and, in its judgment, may either sell the lot as catalogued or make mention of the opinion of such expert, who thereby would become responsible for such damage as might result were his opinion without proper foundation.

AMERICAN ART ASSOCIATION,
American Art Galleries,
Madison Square South,
New York City.

CATALOGUE

FIRST AFTERNOON'S SALE

FRIDAY, JANUARY 26, 1917

AT THE AMERICAN ART GALLERIES

BEGINNING AT 2.30 O'CLOCK

Nos. 1 to 194, inclusive

THE AMERICAN ART ASSOCIATION
MANAGERS

SALE AT THE AMERICAN ART GALLERIES
COLLECTION OF MESSRS. YAMANAKA & CO.
Afternoons of Friday and Saturday,
January 26 and 27, 1917

To save time and to prevent mistakes each Purchaser will oblige the Managers by filling in this slip and handing it to the Record Clerk or Sales Attendant on making the first purchase.

Purchaser's Name _____

Address in Full _____

Amount of Deposit _____

l quality,
inc azure.
k and re-

expanding
s, in cavo-
medallion

the foot.
f-pearl in

rich tones set off by gilding; on one face a female figure borne upon the waves, and on the other a lotus pond in blossom. Inscriptions on both faces. Sides, shoulder and stopper in mosaic of the same materials.

FIRST AFTERNOON'S SALE

FRIDAY, JANUARY 26, 1917

AT THE AMERICAN ART GALLERIES

BEGINNING AT 2.30 O'CLOCK

Nos. 1 to 194, inclusive

1—BLUE GLASS SNUFF BOTTLE

Transparent glass of a rare and highly prized quality, with mirror surface, its color a deep, crystalline azure. Flattened full-moon shape, with cylindrical neck and recessed foot.

2—CINNABAR LACQUER SNUFF BOTTLE

Ovate leaf shape with small foot, and short, expanding neck. Carved all around with blossoming peonies, in cavrilievo, under a sceptre-head border; incised medallion under foot.

3—INLAID SNUFF BOTTLE

Fan shape, the sides flat, and tapering toward the foot. Black lacquer, minutely inlaid with mother-of-pearl in rich tones set off by gilding; on one face a female figure borne upon the waves, and on the other a lotus pond in blossom. Inscriptions on both faces. Sides, shoulder and stopper in mosaic of the same materials.



4—IVORY SNUFF JAR, LACQUERED

Broad flask shape with shoulder and narrow sides flattened. On one face blossoming poppies with insects fluttering over them, delicately etched in reserve in a lustrous coating of black lacquer; on the opposite face other blossoms and a grasshopper, with an inscription, similarly effected.

5—FEI-TS'UI JADE SNUFF BOTTLE

Ovoidal flask shape; flat foot. Rich and extensive emerald mottling, amid the soft gray-white of water-melted snow. Brilliantly polished.

6—FEI-TS'UI JADE SNUFF BOTTLE

Ovoidal, the flattened sides tapering toward a short foot. Soft translucent emerald-green, with mottlings of gray-white and black opaque patches, under a brilliant polish.

7—FEI-TS'UI JADE SNUFF BOTTLE

Pilgrim-bottle form, the flattened sides tapering downward. Translucent jade of mirror surface, with banks and feathery strata of richest emerald in clouds of soft, light, vaporous gray.



8—BLACK JADE SNUFF BOTTLE

Flattened flask shape with oval foot. Opaque jade of rich ebony black, uniform in quality and of soft lustre; an unusual piece. Yellow tourmaline and coral stopper with ivory spoon.

9—FEI-TS'UI JADE SNUFF BOTTLE

Bulbous ovoidal flask-shape with low foot. Translucent jade of a soft, light fog-gray, with cloud-areas of delicate emerald mottled in tones of deeper green and showing a shoulder touch of black, near which a bat and cloud scrolls are carved in light relief. Mirror polish.

10—PINK CORAL SNUFF BOTTLE

Bulbous flask shape with molded foot. Carved in bold relief with a man leading a refractory water buffalo, and a lady mounted on a horse and followed by a banner-bearer afoot, before a crenellated wall.



11—PEKING ENAMEL SNUFF BOTTLE (*Ch'ien-lung*)

An imperial production. In the form of an ovoidal vase, slightly flattened, with gilt termini and stopper. Richly painted at imperial command by a European artist working in China, with a pastoral scene showing a lady and youth seated in a flowery field traversed by a stream, sheep near them, and distant buildings visible under a brilliant sky. Imperial mark under foot.

12—PAIR SMALL STATUETTES

Miniature standing figures of a nobleman and his wife, carved of pink coral mottled in white and brightly polished.

13—THREE WHITE JADE ORNAMENTS

Miniature figures, carved in the round, representing respectively a seated lumberman of the mountains, ax in hand, a seated fisherman, and a standing farmer with his hoe over his shoulder. All brilliantly polished.

14—THREE WHITE JADE BIRD ORNAMENTS

Storks in different attitudes, each standing on a leaf, carved with great delicacy and brilliantly polished.

15—WHITE JADE ORNAMENT

Standing figure of an angel, a female angel, smiling, delicately carved in translucent jade of the prized quality described as having the hue of liquescent mutton fat; brilliantly polished.

16—WHITE JADE FIGURE GROUP

Man mounted on a trotting mule, his head held high, and his whip hand behind him, the whip allowed to curl down the animal's rump. Translucent "mutton fat" jade with brilliant polish.

17—PAIR MINIATURE FLOWERING PLANTS

Representing the chrysanthemum and peony, respectively, made up of carved green jade, coral, lapis-lazuli and turquoise, set in white jade flower pots with *ju-i* feet.

Heights, 3½ inches and 3¾ inches.

18—AQUAMARINE BRACELET-ROSARY

Composed of eighteen beads of pale and brilliant aquamarine and two larger beads of pink tourmaline, and having a *fei-ts'ui* jade pendant carved and pierced in phoenix-and-peony motive, with pink tourmaline drops, the strings beaded with seed pearls.

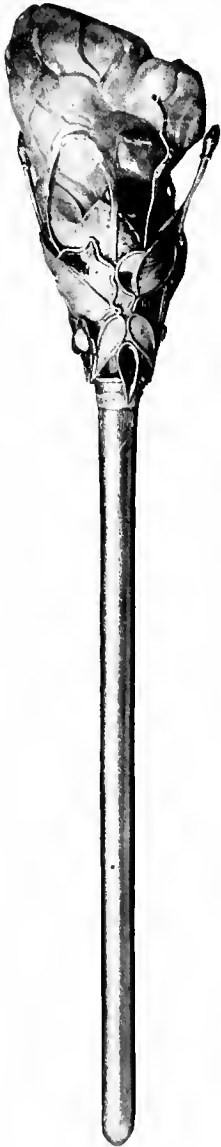
Length of strand, 10 inches; length of pendant, 5 inches.

19—SOAPSTONE STATUETTE

Miniature figure of Marco Polo, in Chinese execution. The Venetian is shown with round and smiling countenance, and long curly hair, seated in Buddhistic posture with hands clasped over his raised right knee, a loose robe falling from his shoulder and leaving the upper body nude. Gray soapstone with a vein of black.

20—CRYSTAL FIGURE ORNAMENT

Boy seated on the floor, playing a drum; carved in brilliant crystal with hair lines and more pronounced markings.



21—KOREAN HAIR PIN

The long pin silver and silver-gilt, with a lightly engraved lotus-petal border; at its head a cloisonné enamel floral ornamentation in blue, green and *aubergine*, enclosing a bold chrysanthemum cluster carved of clouded yellow amber.

Length, 10⁷/₈ inches.

22—GREEN JADE-STONE BOX WITH COVER

In shape of a peach lying on its side and somewhat flattened, split laterally to form the cover. It is partly surrounded by a branch and leaves, carved in openwork, and a bee, dragon-fly and ladybugs are carved in relief.

Length, 3¹/₄ inches.

23—FEI-TS'UI JADE COUPE

Compressed circular form with lightly rounded lip. Ornamented with peony branches in flower and bud, carved in relief and openwork embracing the shoulders and extending underneath the bottom between them a bee in relief appears on the shoulder. Rich emerald green mottlings in the soft white of melting snow, and underneath, soft brownish patches; brilliant polish. Carved ivory stand.

Length, 4¹/₂ inches.

24—ROCK CRYSTAL COUPE

Inverted cone shape, truncated to form a small foot that is concaved underneath, with mounded shoulder and inward-rounding lip. Brilliant crystal with fine polish, unadorned.

Diameter, 3¼ inches.

25—PAIR ROCK CRYSTAL VASES

Slender oviform with short neck and spreading lip, and socket foot. Brilliant, clear rock crystal with smooth, bright polish.

Height, 5½ inches.

26—CRYSTAL ORNAMENT

A fat and heavy bovine, standing, with a leading-rope coiled from its mouth over its rump and held by a boy who is climbing over the animal's shoulder. Carved in brilliant hair crystal, partly clear and partly in reddish wine tones.

Length, 5¼ inches.

27—AMBER ORNAMENTAL GROUP

A boy holding a vase is largely enveloped in a floral branch rich in blossoms, carved in openwork, the vase from which the branch issues being incised with fret borders and a bird in a blossoming tree. At one side is a lion and at the other a bat. Rich ruby, brown and golden translucent amber of brilliant surface.

Height, 4¾ inches.

28—AMBER STATUETTE

Figure of Tobosaku standing, or rather halted momentarily in a walk, holding aloft a branch heavy with the peaches of longevity. He is poised upon rockery about which more of the fruit grows, and a lion carved in the round there noses his knee. Clear amber of golden translucency and rich ruby glints, in parts transparent, while areas of the base have an ebony-black surface with the light on them, yet prove of deep reddish translucence. Soft and brilliant polish.

Height, 6⅞ inches.



29—JADE ORCHID IN ENAMEL JARDINIÈRE (*Ch'ien-lung*)

The plant in mottled green jade brilliantly polished, the blossom in amethyst; at its root a lapis-lazuli rock. In a hexagonal jar of cloisonné enamel, with lotus decoration, set into a dripping basin also of cloisonné enamel, its ornamentation a swastika lattice in the metal in a turquoise-blue ground.

Height, 11¾ inches.

30—MINIATURE POMEGRANATE TREE

In fruit and flower, formed of green jade and carnelian agate, and set into a dense green jade jardinière with sceptre-head feet.

Height, 7¾ inches.

31—DWARF CITRON TREE (*Ch'ien-lung*)

The many-fingered or Buddha's-hand citron, with leaves of *fei-ts'ui* jade and fruit in clear golden and light clouded amber, growing near a begonia in green jade and Chinese ruby, in a white jade jardinière of foliated outline.

Height, 9 inches.

32—LAPIS-LAZULI ANIMAL GROUP

Recumbent Fu-lion gripping in his mouth the fillets of the brocaded ball, which lies under his chin and over which a eub raises its head toward the parent. Carved of a solid block of richly colored lapis-lazuli with russet mottlings.

Length, 5½ inches.

33—WHITE JADE DISH

Low and shallow, shaped in the form of a phoenix: pure white jade, thin to the point of transparency except in the bird's head, which is carved in the round and forms a handle. Low oval foot; soft unctuous polish.

Long diameter, 6½ inches.

34—WHITE JADE ORNAMENT

A thin, oval slab of jade, ornamented in the dragon motive, the monster's head carved in low relief over conventional waves and the surfaces of the stone studded with bosses in representation of the body's scales. Soft polish.

Length, 7¼ inches.

35—AQUAMARINE VASE

Slender ovoidal form, embraced within pine trees carved in high relief and undercut. Birds are perched amongst the foliage, and between the trees Shou-lao and attendant, a spotted stag, a stork and the sacred fungus appear, carved in relief.

Height, 4½ inches.

First Afternoon

36—SOAPSTONE STATUETTE

Seated figure of a Lohan, holding a bracelet-rosary in relief over his raised left knee. His priestly robes are richly adorned with lotus medallions and scroll borders, incised with diapered grounds. Foliated base of soapstone, mottled in red, yellow and gray, and minutely incised.

Height, 5¾ inches.

37—SOAPSTONE STATUETTE

Kuan-yin seated, with left knee raised and supporting a scroll in her right hand, which is crossed over the concealed left. The goddess's robes are incised with lotus embroideries, retaining traces of gilding, and the scroll is similarly incised. The goddess wears a jeweled necklace and bracelet, and her hair is blackened. Yellowish-gray soapstone of waxen surface.

Height, 5⅝ inches.

38—CRYSTAL ORNAMENT

Figure of a Lohan seated over a gourd, carved in brilliant crystal very slightly smoked, his eyes set in in red. From the gourd's head its vine-branches, running into gray-white and yellow agate tones, rise clear of the Lohan and over-arch his head, supporting in their course five bats in relief.

Height, 6½ inches.

39—CRYSTAL VASE

A large ovoid jar embraced within the branches and long curling leaves of a peach tree, with three boys climbing over the jar's side, is carved in clear crystal, which just beyond the jar's boundary runs into an opaque quartz of pale russet-yellow, which is carved with peaches and the Buddha's-hand citron.

Height, 3¾ inches; length, 6½ inches.



40—CYLINDRICAL BOX WITH COVER

Brilliant black lacquer, inlaid on top of cover with mother-of-pearl in a decoration picturing two women, near a vase of flowers on a tall stand, the composition enriched with gilt details. Sides completely occupied with ideographic inscriptions, which retain traces of original gilding.

41—FLOSS-CRYSTAL STATUETTE

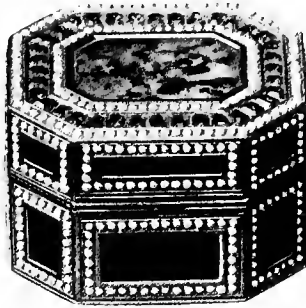
Standing figure of Kuan-yin with smiling countenance, carrying a vase against her shoulder, in brilliant crystal flossed with feathery white patches and striations. On a thalamus of similar crystal with numerous iridescent areas.

Height with base, 9 $\frac{3}{4}$ inches.

42—FEI-TS'UI JADE ORNAMENT

In form of a goose standing among blossoming lotus plants, one wing raised and its head turned high over its back, bill open. Body hollowed as a box or incense holder, the back lifting off as a cover, and the throat pierced for the passing of incense fumes. Wing plumage etched; the lotus plants carved in bold relief and undercutting. The jade softly mottled and brilliantly polished. Carved ivory stand.

Height, 6 $\frac{1}{2}$ inches.



43—JEWEL TREASURY

An octagonal box with hinged cover, gilt, set with seventeen panels of rich *fei-ts'ui* jade, and jeweled with ruby-colored brilliants and seed pearls. Formal floral decoration on exterior of bottom and interior of cover.



44—ORNATE JEWEL BOX

Silver gilt, with hinged cover and spring catch. On cover and all sides an elaborate decoration of flower sprays, carved in relief and etched, in jade, tourmaline and other stones. Maker's mark underneath.

Length, 3 inches.

45—ORNATE JEWEL BOX

Companion to the preceding.



46—ELABORATE SILVER GIFT JEWEL BOX

Having three compartments, each with separately hinged cover and its own spring catch. The covers of the semi-circular end compartments topped with *fei-ts'ui* jade and edged with small pearls, that of the quadrilateral centre compartment decorated with chrysanthemum sprays carved in relief in *fei-ts'ui* jade and colored crystal. Other flower sprays similarly carved adorn the sides, where also are found two *fei-ts'ui* jade panels. Maker's mark underneath.

Length, 3 $\frac{3}{8}$ inches.

47—ELABORATE SILVER GIFT JEWEL BOX

Companion to the preceding.

CHINESE (MANDARIN) NECKLACE OR ROSARY

"A long chain of one hundred and eight balls or beads. It is called the Chu-Chu, and it is intended to remind the wearer of the land of which he is a native. Of the one hundred and eight beads of which the chain consists, seventy-two are supposed to represent so many precious stones, minerals, and metals native to China; and the remaining thirty-six represent as many constellations or planets which shed their benign rays on the country. To the left side of this chain are attached two very short strings of smaller beads, supposed to impress upon the mind of the wearer the reverence he owes to his ancestors and the filial piety at all times due to his parents and guardians; to the right side of the chain is attached a short string of smaller beads to remind the wearer of the allegiance which he owes to the imperial throne of his country."—GENERAL TCHENG-KI-TONG: *The Chinese Empire*.

48—MANDARIN NECKLACE OF CORAL AND JADE

One hundred and eight beads of pink coral, of one-half inch diameter, are carved each with four Shou medallions incised on a relief ground; four one-inch globes of *fei-ts'ui* jade repeat the device in a perforate scroll ground. Three side pendants of grayish aquamarine beads with the same device, with drops of aquamarine, pink and yellow tourmaline, and a long pendant with tourmaline panel and jade drop, set off by silk braiding showing the swastika symbol. All the drops in gold filigree mounts inlaid with kingfishers' feathers.

Length of main strand, 62 inches; of side pendants, 9 inches each; of main pendant, 14 inches.

(Illustrated)

49—MANDARIN NECKLACE OF YELLOW AND PINK TOURMALINE

A rare production of unusual beauty. The necklace proper consists of one hundred and two beads, one-half inch in diameter, of brilliant yellow tourmaline, its color quality a sauterne tone with variants, and four large beads of pink tourmaline—the "Chinese ruby", as it is sometimes called—with corded sections bound with seed pearls and minute coral beads. Pendant at the sides are three strings of ten pink tourmaline beads each, slightly smaller than the yellow beads, with *feit-ts'ui* jade drops mounted in filigree topped by pearls; in the long main pendant a pink tourmaline panel and drop are similarly mounted, with an additional inlay of kingfisher's feathers. In octagonal carved wood box with incised inscriptions in green.

Length of main strand, 59 inches; length of side pendants, 8¾ inches each; drop of main pendant below the necklace proper, 16 inches.



No. 48—MANDARIN NECKLACE OF CORAL AND JADE

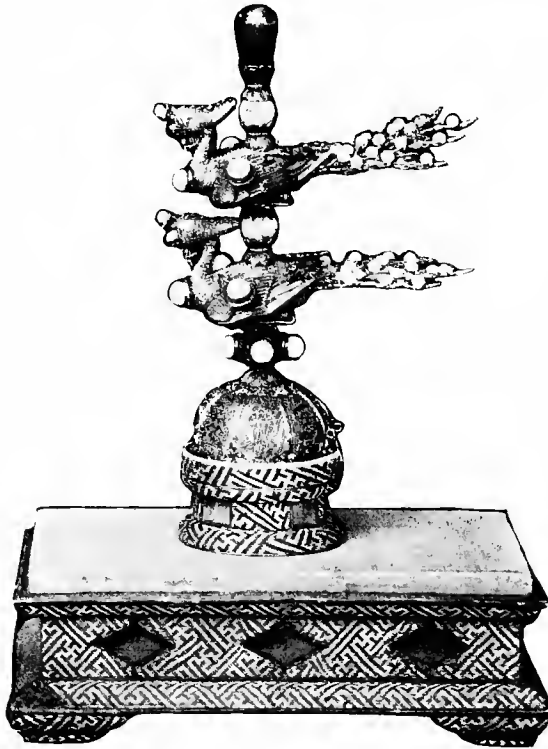
The seven articles here following, of pure gold, were possessions of the Ch'ing dynasty, and were purchased at the sale of the Manchu treasures held at Peking in the Spring of 1916.



50—EMPEROR'S CROWN ORNAMENT

A crown-shaped base with sceptre-head edge, adorned with dragons in network relief on a filigree diaper ground, supports a standard of similar workmanship displaying more dragons, the whole set with eight pearls and topped by a crystalline mass of Chinese ruby. One of the ornaments of the Emperor's crown.

Height, $5\frac{1}{4}$ inches; diameter of base, $1\frac{1}{8}$ inches.



51—EMPERESS'S CROWN ORNAMENT

A crown-shaped or dome-shaped base with sceptre-head edge, in eight panels of fine diaper scroll, adorned with the Buddhistic emblems of happy augury in delicate relief, supports a standard of gold and pearls sustaining two phœnixes one above the other, each of intricate workmanship, with a finial of dark grayish mother-of-pearl. The tail feathers and crests of the birds are brilliant with small pearls, and larger pearls stud wings and breasts. Altogether there are twelve large pearls and forty small ones. One of the ornaments of the Empress's crown.

Height, 6 inches; diameter of base, $1\frac{7}{8}$ inches; length of birds, 4 inches.

First Afternoon

52—EMPRESS'S CROWN ORNAMENT

The figure of a phoenix, hollow, of woven gold, squatting upon a cloud-bank *repoussé*, wings and tail in filigree and widely spread. On breast, back, wings and crest, five large pearls. On the five long tail feathers, nineteen small pearls. Twenty-four pearls altogether. One of a set of five ornaments worn on the Empress's crown, the other four following below.

Height, 1½ inches; length, 6½ inches.

(Illustrated)

53—EMPRESS'S CROWN ORNAMENT

Companion to the preceding and of same dimensions.

(Illustrated)

54—EMPRESS'S CROWN ORNAMENT

Companion to the preceding and of same dimensions.

(Illustrated)

55—EMPRESS'S CROWN ORNAMENT

Companion to the preceding and of same dimensions.

(Illustrated)

56—EMPRESS'S CROWN ORNAMENT

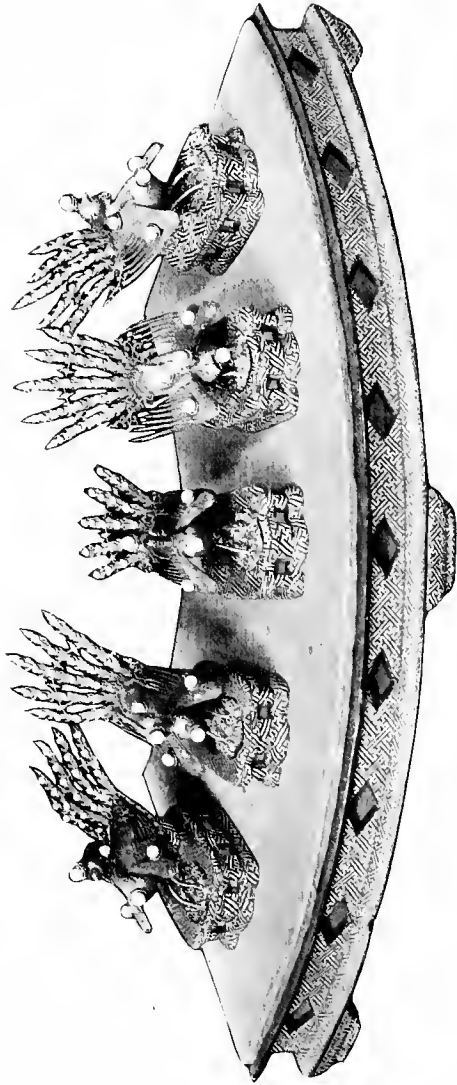
Companion to the preceding and of same dimensions.

(Illustrated)

57—CHESTNUT-YELLOW JADE VASE WITH COVER

The vase of flattened flask-shape with pedestal foot, incurvate neck and two scroll handles; cover dome-shaped with hollowed knob finial. The vase rests on a stand of angular-scroll work, on which two phoenixes are perched, on different levels and opposite sides, each holding in its beak a fungus branch. Chestnut-yellow jade of grayish tinge, with veins of chestnut-brown; brilliant polish.

Height, 9¼ inches.



Nos. 52, 53, 54, 55 and 56—EMPEROR'S CROWN ORNAMENTS



58—FEI-TS'UI JADE CENSER WITH ORIGINAL COVER

Cauldron-shape with narrow, flat shoulder and flanged lip, two bold dragon-head handles with scroll pendants, and three monster-heads in relief on the underbody from which pendent flutings loop around the basal ring, forming low feet. The sides are carved in low relief with the ogre lineaments and attendant features of ancient bronzes. The dome cover is similarly carved, on its shoulder are three goats, partly reclining, and the knob handle is carved with a coiling dragon. The jade shows delicate and rich emerald mottling with soft white, and is brightly polished.

Height, 5 $\frac{5}{8}$ inches; width across handles, 6 $\frac{1}{2}$ inches.

59—JADE STATUETTE

Seated Buddha, with hands resting palm-upward one on the other, in front of him, in grayish-white jade brilliantly polished, on a beaded thalamus of green jade with the lotus petals carved in relief.

Height, 9½ inches.

60—GREEN JADE CIRCULAR DISH (*Ch'ien-lung*)

Shallow ovoidal form, on low foot. Translucent grayish-green jade with dark and varied moss-green fleckings, carved in low relief with a blossoming tree which issues from among rocks underneath the foot of the dish and extends up the side and over the interior, where a bird of paradise is perched on one of the branches. Under the foot, *Ch'ien-lung nien chih*, in ancient characters.

Diameter, 7⅝ inches.

61—GREEN JADE CIRCULAR DISH (*Ch'ien-lung*)

Companion to the preceding, with a flying bird as well as one perched appearing in the interior. Same mark.

62—JADE CIRCULAR DISH

Shallow, with low foot; translucent jade of a soft, vaporous-gray tone, with luminous polish and without decoration, the surface presenting a curious crinkle due to the texture of the stone.

Diameter, 8⅝ inches.

63—JADE CIRCULAR DISH

Shallow, with ovoidal sides and spreading lip. Translucent gray-white jade, effectively clouded in a purer white, as with snows lying in the mountains; unadorned and brilliantly polished.

Diameter, 9¼ inches.



64—DISH OF FRUIT (*Ch'ien-lung*)

A shallow circular dish of grayish-white jadeite, all surfaces carved in conventional lotus motive, the carving Tibetan. On it a branch of pomegranates, the pomegranates green, yellow and brown agate, with the luscious meat inlaid in red glass, the leaves of green jade, and carnelian blossoms.

Height, 6 inches; diameter of dish, 7 inches.

65—JADE TURNIP (*Ch'ien-lung*)

Leaves of translucent *fei-ts'ui* jade, amber blossoms, and root of dense opaque reddish-brown agate, in an ivory bowl of inverted bell-shape, carved in relief with fruits and flowers, birds and insects.

Height, 12 $\frac{3}{4}$ inches.



66—MINIATURE GARDEN (*Ch'ien-lung*)

A clump of bamboo trees, their trunks of gray-green jade, their delicate leaves of *fei-ts'ui* jade; at their foot shrubs in green jade and pink tourmaline, and a lapis-lazuli rock. In circular white jade dish with flaring, foliated rim.

Height, 9½ inches.

67—DWARF BIWA TREE

The biwa or loquat tree with its fruit and leaves in dense opaque yellow *Ch'ien-lung* glass and green jade, a lower branch of white jade blossoms and a shrub in green jade and pink tourmaline, in a porcelain ovoidal wall vase decorated with storks above the sea, bearing in their bills clusters of the peaches of longevity.

Height, 16½ inches.



68—A GARDEN VEGETABLE ENNOBLED (*Ch'ien-lung*)

The turnip, with root in red and brown agate brightly polished, leaves in *fei-ts'ui* jade, and flowers in yellow clouded amber, set in a *fei-ts'ui* jade flaring bowl with bold foot.

Height, 14 inches.

69—DISH OF FRUIT (*Ch'ien-lung*)

Branches of a persimmon tree with large and small fruit in dense opaque brown jade of varying tone, leaves of green jade and agate blossoms, lying with bunches of amethyst grapes on a green jade circular plate with an engraved floral decoration.

Height, 6 inches; diameter of plate, 9 $\frac{3}{8}$ inches.



70—MINIATURE GARDEN (*Ch'ien-lung*)

A plum tree in plenteous bloom, with petals of white jade and pink tourmaline, beneath it a coral chrysanthemum with green jade leaves, in a white jade jardinière carved as a hollowed rock, with branches of the peaches of longevity in bold relief about it. Traces of gilding on the jardinière.

Height, 16½ inches.

71—CLOISONNÉ ENAMEL GILT WALL VASE (*Ch'ien-lung*)

Pilgrim-bottle form with spreading foot and archaic dragon handles, the neck bulbous. Lotus ornamentation in soft colors within a rich lapis-lazuli-blue ground. Let into the centre a *fei-ts'ui* jade disc, carved and perforated, showing figures among lotuses. The vase holds an orchid plant in blossom, in green and white jade.

Height of vase, 7 inches; height with flowers, 14½ inches.

First Afternoon

72—OPAQUE GLASS JAR (*Ch'ien-lung*)

Ovoid with steep shoulder and short cylindrical neck, with lip sloping inward. Opaque glass of light and dark orange tones, and about the neck and shoulder marbled. Surface of soft waxen lustre.

Height, 6 $\frac{7}{8}$ inches.

73—PAIR JADE TABLE SCREENS

Discs of translucent white jade, carved in relief with immortals and attendants in mountainous landscapes, in one Shou-lao appearing with his emblem the spotted stag. Reverse of each carved with the wild plum tree in blossom. The discs rest in architectural stands built up of white and dense green jade, carved in openwork and relief with archaic dragons and other characteristic motives.

Diameter of discs, 5 inches; height in stands, 8 $\frac{1}{4}$ inches.

74—WHITE JADE FLOWER BOWL (*Ch'ien-lung*)

Low, broad, and ovoidal, with two large loop handles of monster-head character, supporting loose rings. Exterior surface exquisitely carved all the way around with herons in a lotus pond, in delicate relief. Lustrous polish. Four bats in bold relief form the feet. Under the bottom the imperial *Ch'ien-lung* mark, incised.

Diameter, 6 $\frac{3}{4}$ inches; width across handles, 8 $\frac{3}{4}$ inches.

75—LAPIS-LAZULI STATUETTE

Seated Buddha with smiling expression, holding a vase on his interlaced hands; carved in mottled lapis-lazuli of rich color, his robes bordered with incised embroideries, gilded. On a thalamus of dark green jade.

Height of figure, 5 $\frac{3}{4}$ inches; height with stand, 7 $\frac{1}{8}$ inches.

76—ROCK CRYSTAL TEAPOT

Ovoidal with full and flattened shoulder, in-setting disc cover with loop handle which connects by a chain of loose links to the main handle, and phœnix-head spout. The entire exterior carved in bold relief and undercutting with birds in blossoming peony trees, and the phœnix's plumage engraved.

Height, 4¾ inches; length, 8¾ inches.

77—SOAPSTONE FIGURE GROUP

The goddess of mercy in gray and yellowish soapstone, holding in her hands a seated boy who carries a lotus spray. The hair of both figures is blackened, and the robes of the goddess are incised with embroideries. She stands on a rock base of chicken's-blood soapstone, carved in openwork as rockery.

Height with base, 14¼ inches.

78—ROCK CRYSTAL VASE WITH COVER

Enlarged flask shape with spreading foot and two animalistic and loose-ring handles. On either face four archaic phœnixes carved in high relief; incised fret borders on lip and foot. Dome cover also with fret border, surmounted by a phœnix and peony.

Height, 11¼ inches.

79—CLOISONNÉ ENAMEL GILT WALL CASE (*Ch'ien-lung*)

Pilgrim-bottle form, with spreading foot, bulbous neck, and two archaic dragon handles. Peony ornamentation in soft colors on a light turquoise-blue ground. At the centre a quatrefoil medallion in relief, in *champlevé* enamel, enclosing a filigree quatrefoil set with colored stones. The vase holds a blossoming begonia and hydrangea, and the ground bamboo, in jade, turquoise and other stones.

Height of vase, 7 inches; height with flowers, 13 inches.

First Afternoon

80—ROCK CRYSTAL VASE WITH COVER

A flattened quadrilateral vase, with animal-head and loose-ring handles, rests upon the back of a *feng-huang* standing or squatting on a scrolled base, its tail feathers curling up and forming a subsidiary vase or compartment at one end of and below the larger vase. The bird's plumage is carved in relief and engraved, in front of its throat is a pendent loose ring, and on the sides of the vase are bamboo and other sprays. Dome cover, plain.

Height, 11½ inches.

81—MINIATURE GARDEN (*Ch'ien-lung*)

Orchids blossoming in white jade and rich-hued amethyst, with leaves of richly mottled green jade brilliantly polished, in oviform cloisonné jar adorned with floral scrolls and borders on a turquoise ground, interrupted by foliate medallions bearing Fu-lions and dragon-horses on a deep purple-lapis ground.

Height, 14½ inches.

(*Illustrated*)

82—MINIATURE GARDEN IN CLOISONNÉ JAR (*Ch'ien-lung*)

Companion to the preceding, the flowers being Chinese lilies in white and green jade.

Height, 15¼ inches.

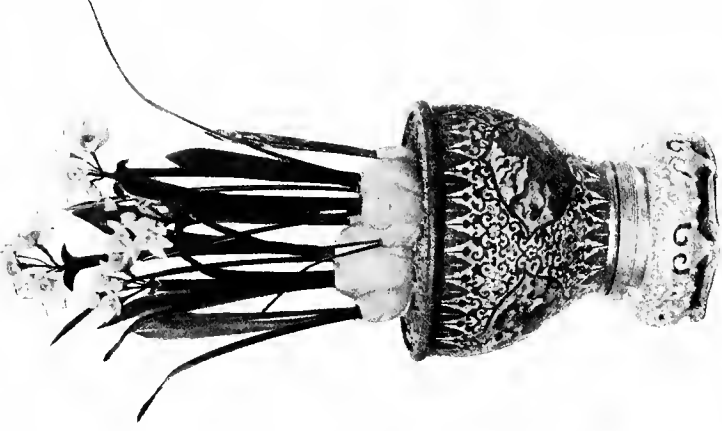
(*Illustrated*)

83—MINIATURE GARDEN (*Ch'ien-lung*)

The *natten* tree, with leaves of gray-green jade and berries, or seeds, of pink coral, and under it a lily and shrubs in green jade, amethyst, agate and tourmaline, in a soap-stone jardinière carved as the overturned stump of an aged plum tree, a branch still blossoming and another supporting a recumbent figure.

Height, 20¼ inches.

(*Illustrated*)



No. 82



No. 83



No. 81



84—MINIATURE GARDEN (*Ch'ien-lung*)

The crow melon vine in fruit, overrunning a dead tree, the vine leaves of green jade, with wire tendrils wound with yellow silk, the fruit in carnelian agate. At the foot of the tree an amethyst rock, and near it a tiger lily with green jade leaves, an open flower in opalescent agate, and buds in carnelian and amethyst. In white jade dish with butterfly-loop handles, carved in relief with dragons.

Height, 16 inches.

85—MINIATURE GARDEN (*Ch'ien-lung*)

The wild plum tree in blossom, the ground bamboo, a rose bush in bloom, and the *polyporus lucidus*, all treated conventionally, executed in white jade, mother-of-pearl, coral and pink tourmaline, with gilt and silken leaves, in a quatrefoil jardinière of Peking enamel on sceptre-head feet. The jardinière decorated in polychrome with bats, symbols and conventional lotus designs, on a gray-lilac ground. A companion piece to the succeeding number, the two together, the plum and the pine, making up the New Year salutation, used by both the Chinese and Japanese, which the Japanese call the *Shochikubai*—a wish for long life and happiness, extended at the beginning of the year.

Height, 16 inches.

86—MINIATURE GARDEN (*Ch'ien-lung*)

Companion to the preceding, with the pine tree the principal motive, completing with the plum tree of the preceding number the New Year greeting with its wish of happiness and long life.

87—A TREE JAPONICA IN BLOSSOM (*Ch'ien-lung*)

The *keika* or *katsura*, with lanceolate leaves of green jade, lightly veined, and minute blossoms in light yellow amber; at its foot begonias in green jade and pink tourmaline, about a rock of turquoise matrix. The whole in a foliate jardinière of cinnabar lacquer, on six *ju-i* feet, richly carved with garden scenes and figures, in panels on a deeply incised ground.

Height, 20 inches.

88—PRUNUS TREE IN LACQUER VASE (*Ch'ien-lung*)

The winter blooming wild plum tree, its blossoms in white jade, with chrysanthemum and begonia below it in green jade, tourmaline and amber, in a tall quadrilateral vase of cinnabar lacquer carved with landscapes and figures of immortals.

Height, 23 inches.



89—A MINIATURE GARDEN OF POPPIES

Leaves of translucent green jade, flowers in clear golden and clouded light yellow amber, tourmaline, amethyst, carnelian, turquoise and lapis-lazuli. Cloisonné enamel jardinière, with conventional lotus decoration in soft colors on a light turquoise-blue ground.

Height, 17½ inches.

90—A MINIATURE GARDEN OF POPPIES

Companion to the preceding.

91—POMEGRANATE TREE IN BLOSSOM

Slender leaves in green jade, the many blossoms in carnelian; under the tree, statuette of a lady, carved in rich pink coral. In champlevé enamel jardinière, oblong with incurvate corners, with lotus decoration. Inlaid in each side of the jardinière a panel of white jade, three of the panels decorated and one filled with an inscription, all incised and gilded.

Height, 19 inches.

92—POMEGRANATE TREE IN BLOSSOM

Companion to the preceding, with statuette of boy in coral.

93—PRUNUS TREE IN BLOSSOM (*Ch'ien-lung*)

The winter blooming wild plum tree with a plenitude of blossoms in white jade, in a circular green jade dish ornamented with four medallions, the medallions having a gilded ground and bearing each an ideographic character in low relief, the four expressing wishes of a million years of good fortune.

Height, 17½ inches.

94—BLOSSOMING TREE IN LACQUER VASE (*Ch'ien-lung*)

A gnarled peach tree with blossoms in yellow tourmaline, and under it a begonia and chrysanthemum in green jade, coral, pink tourmaline and turquoise, in a tall cinnabar lacquer vase carved in relief with figures of immortals in landscapes.

Height, 22 inches.

95—JADE FLORAL ORNAMENT (*Ch'ien-lung*)

Kaya-kusa in green and white jade, pink tourmaline, carnelian and lapis-lazuli, in an elongated, flattened vase of white jade, displaying formal carvings in low relief and two animal-head and ring handles in bold relief.

Height, 13 inches.

96—ORNAMENTAL GRAPE ARBOR (*Ch'ien-lung*)

Erected from a gilt and enamel hexafoil jardinière. The vine in full fruit, its bunches of green grapes formed of aquamarine and *fei-ts'ui* jade, the leaves of green jade with their veins finely incised. On each foil of the jardinière a raised panel bearing a conventional representation of paradise, with bats among clouds above waves, and symbols and jewels, in cloisonné enamel, surrounded by floral scrolls in champlevé enamel; on lip and foot incised key-fret and lotus borders.

Height, 24 inches.

(*Illustrated*)

97—ORNAMENTAL GRAPE ARBOR (*Ch'ien-lung*)

Companion to the preceding, with purple grapes instead of green, the grapes being of amethyst.

98—IMPERIAL CHINESE LOTUS POND (*Ch'ien-lung*)

The "pond" a gilt jardinière, oviform, with incised and repoussé scroll decoration, on which are implanted conventional lotus flowers in colored stones; the top of the jar or "water surface" a mirror. Rising through the mirror on tall stems are lotus leaves and blossoms in green and white jade, carnelian and tourmaline, and resting on the mirror are carnelian gold fish and a white soapstone heron.

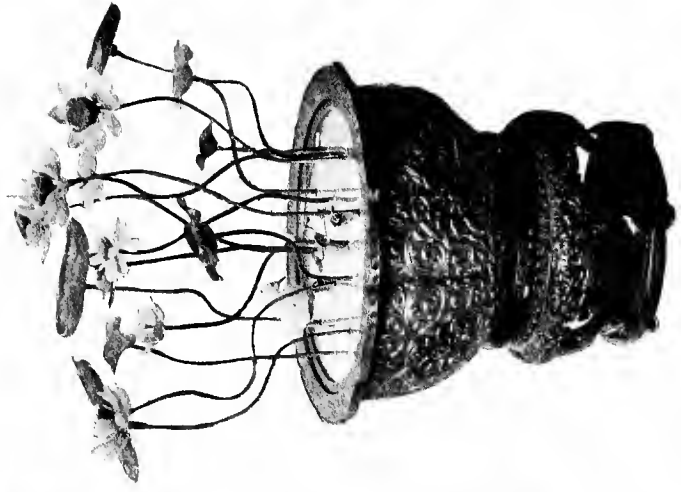
Height, 21 inches; diameter, 16 inches.

(*Illustrated*)

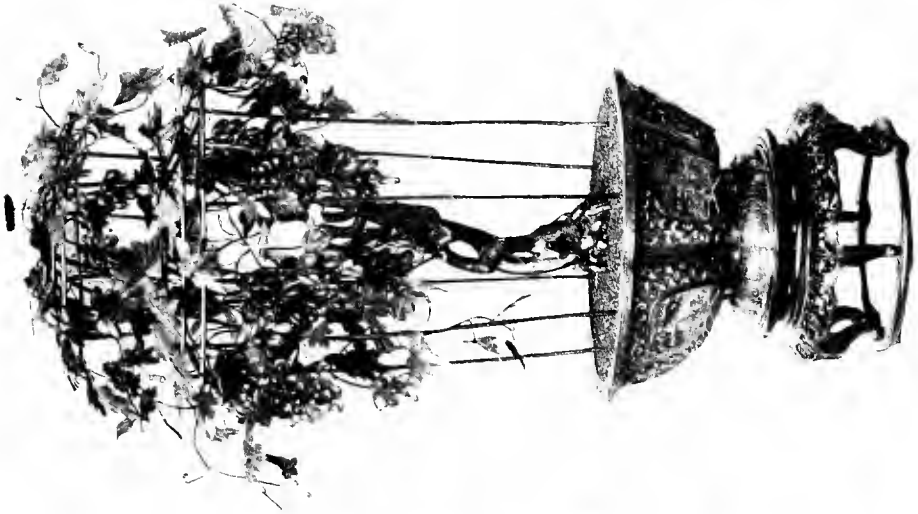
99—IMPERIAL CHINESE LOTUS POND (*Ch'ien-lung*)

Companion to the preceding.

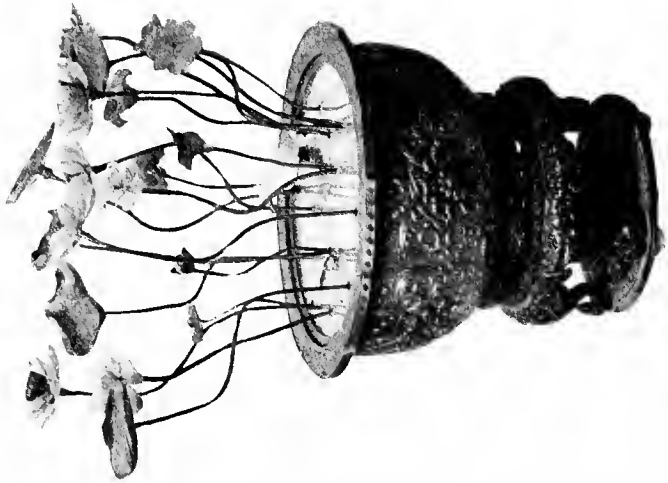
(*Illustrated*)



No. 99



No. 96



No. 98

First Afternoon

100—CITRON TREE IN PEKING ENAMEL VASE (*Ch'ien-lung*)

A tree of the Buddha's-hand citron in fruit, the leaves of green jade, the fruit of clear golden amber, clouded yellow amber and brown amber. Beside it a peony, with varied flowers. The vase decorated in the hawthorn pattern, the blossoms in pink, white and green on a "cracking ice" ground of rich, glowing blue.

Height, 31 inches.

101—CITRON TREE IN PEKING ENAMEL VASE (*Ch'ien-lung*)

Companion to the preceding.

102—GOURD ARBOR (*Ch'ien-lung*)

A gourd vine, its spreading leaves in light and dark mottled green jade, each delicately carved and veined, rises from beside a yellow soapstone rock up which a lizard crawls, and drooping about the sides of the arbor exhibits blossoms of white jade and yellow amber, and double-gourds in the same materials and also in carnelian, lapis-lazuli, turquoise, *fei-ts'ui* jade, agate, tourmaline and rock crystal. In cloisonné enamel jardinière with a conventional lotus scroll decoration in polychrome on a turquoise-blue ground, the jardinière quadrilateral with chamfered corners, each face bearing a gilt panel with relief ornamentation; raised on four angular feet.

Height, 22 inches.

103—GOURD ARBOR (*Ch'ien-lung*)

Companion to the preceding.

104—PEONY GARDEN IN IMPERIAL JARDINIÈRE (*Ch'ien-lung*)

Leaves of dark green jade, variously carved and incised, and luxuriant blossoms in mottled green jade and white jade and yellow soft jade, in amethyst, tourmaline and lapis-lazuli, and in carnelian and opalescent agate. At base of trees an amethyst rock, and one of turquoise with Fu dogs climbing about it; broken coral ground. Jardinière in brilliant light canary-yellow, spangled with scores of butterflies in polychrome enamels.

Height, 3 feet 9 inches; diameter of jardinière, 21½ inches.

(*Illustrated*)



No. 104—PEONY GARDEN IN IMPERIAL JARDINIÈRE



105—BLOSSOMING CAMELLIA IN CLOISSONNÉ ENAMEL JAR

Leaves of polished dark green jade, buds and blossoms in white jade and carnelian. The containing jar quadri-lateral, and resting on an architectural base with sceptre-head feet; its decoration flowers and conventional borders in soft colors on a turquoise ground of greenish trend.

Height, 26 inches.

106—BLOSSOMING CAMELLIA IN CLOISSONNÉ ENAMEL JAR

Companion to the preceding.

107—TAOIST MOUNTAIN GARDEN WITH FLOWERS AND FIGURES

Rock shelves and cliffs of a mountain region, in carved wood, rise from a sea represented in the carved stand, and lesser rocks of white jade, lapis-lazuli and turquoise matrix appear on the shelves. Shou-lao with his staff and emblematic peach, and a lady and two boys, all in white jade, stand among them, and the god of longevity's emblematic stag looks down from a tall crag. About are blossoming orchids, chrysanthemums and various shrubs, a resplendent peony tree and snowy white plum tree, begonias and the sacred fungus, the pine and the bamboo, executed in white and green jade, *fei-ts'ui* jade, amethyst, tourmaline, lapis-lazuli and carnelian. *Height (with stand), 2 feet 3½ inches.*

108—TAOIST MOUNTAIN GARDEN WITH FLOWERS AND FIGURES

Companion to the preceding, with more formidable mountains, and an equally brilliant floral display. Here Shou-lao is mounted on a stag, another figure appears in pink coral, and a fisherman in white jade. High aloft is a pavilion, and near by a bird on a plum branch.

Height, 2 feet 5 inches.

109—AN INDOOR CHRYSANTHEMUM GARDEN (*Ch'ien-lung*)

Leaves of light and dark green jade attach to numerous stems, and blooms appear in white and yellow jade and a green jade flecked with black, in turquoise and lapis-lazuli and carnelian, tourmaline and glass. Ground, a gravel of broken coral stems. In a deep jardinière of Peking enamel, modeled in large quatrefoil shape with a flaring and foliated rim. The principal decorations of the jardinière are four panels of landscapes and figures, which illustrate both in composition and style the mutual influence and interaction of Chinese and European painting, noticeable in China during the *Ch'ien-lung* period. Under the bottom the imperial seal mark. On its own original gilt stand with a varied ornamentation, including openwork scrolls and a cloisonné enamel band of large and small sceptre-head outlines, displaying floral designs in polychrome on a deep lapis-blue ground.

Height, 2 feet 9 inches; diameter, 17¼ inches.

FISH BOWLS AND AQUARIUMS

110—BLUE GLASS FISH BOWL (*Ming*)

Ovoid, with flat foot recessed underneath, and corresponding umbo in the interior, narrow flattened shoulder and broad molded lip. Transparent glass of sapphire and mazarin-blue notes with the light on it, and a clear azure translucence against the light.

Height, 8 inches; diameter, 11½ inches.

(*Illustrated*)

111—GREEN GLASS FISH BOWL (*Ch'ien-lung*)

Transparent glass of bluish-emerald tone; ovoid, with abbreviated neck and wide mouth. Projecting from within, a jade lotus clump, with leaves, bud, and open flower showing seed-pod, one leaf perforated by borings of insects.

Diameter, 11 inches; height, 13¾ inches.

112—GLASS AQUARIUM ON LACQUER STAND

Colorless glass, of compressed globular form, with a faceted band about the centre. Within and rising above the rim a lotus clump with leaves of pale green and *fei-ts'ui* jade, lightly veined by incision, and flowers of rich carnelian brightly polished. The stand, in red and gold carved lacquer, is of the Ch'ien-lung period, and represents a Fu-lion upholding a lotus; originally a temple offering stand.

Diameter of bowl, 13¼ inches; height with stand, 4 feet.

113—GLASS AQUARIUM ON TALL LACQUER STAND

Colorless glass in compressed globular form, decorated with a faceted band; within, branches of red and white tree coral. On a temple offering stand of the Ch'ien-lung period (the base modern), in form of a Fu-lion supporting a standard surmounted by a lotus flower. The standard is carved in relief and openwork with the dragon-and-cloud and floral motives; the whole in gold and red lacquer.

Diameter of bowl, 14¼ inches; height with stand, 5 feet.

114—GLASS AQUARIUM ON TALL LACQUER STAND

Companion to the preceding; the stand the same, Ch'ien-lung down to the base, which is modern.



No. 110—BLUE GLASS FISH BOWL

115—GLASS AQUARIUM ON LACQUER STAND



No. 115

Compressed globular form; colorless glass, with a decorative band of broad facets about the centre. Within, branches of white and red tree coral. The stand in gold and red lacquer is in form of a Fu-lion supporting a columnar standard which is encircled by floral openwork carving, and upholds a large lotus blossom platform. It is of the Ch'ien-lung period; its original use was as an offering stand in the temple.

Diameter of bowl, 14 inches; height with stand, 3 feet 3¼ inches.

116—GRAND AQUARIUM

A representation of the fabulous Dragon Palace under the Sea. At the back a pictorial panel of the Ch'ien-lung period, with a poem by the Emperor at the upper left. On the panel a pine tree with pendent vine streamers, bamboo trees, a *bizwa* branch, and a pomegranate tree in fruit, also four storks in different postures, carved in relief in green and white jade, amethyst and wood and inlaid above a sea of glass waves. Within the aquarium rocks of natural stone colored,

and of veritable turquoise and seed-pearl and white jade, with white jade bridges, pagodas and other buildings, a pavilion of lapis-lazuli and another of yellow jade, trees of red and white coral, and figures and animals of white jade and *fei-ts'ui* jade, turquoise and aventurine, besides various white jade boats with boatmen.

Height, 32 inches; length and width (approximative), 55 inches and 18 inches.

LACQUER BIRDCAGES

117—BROWN LACQUER BIRDCAGE (*Ch'ien-lung*)

Dome-shape with flattened top and carved ivory lantern and feet. Flowers, fruits and butterflies in soapstone and tinted ivories. Carved ivory worm tongs, utensils and various embellishments. *Fei-ts'ui* and white jade chain suspended from bronze dragon bracket on tall teakwood and brown lacquer standard.

Diameter of cage, 14½ inches; height of standard, 6 feet 4 inches.

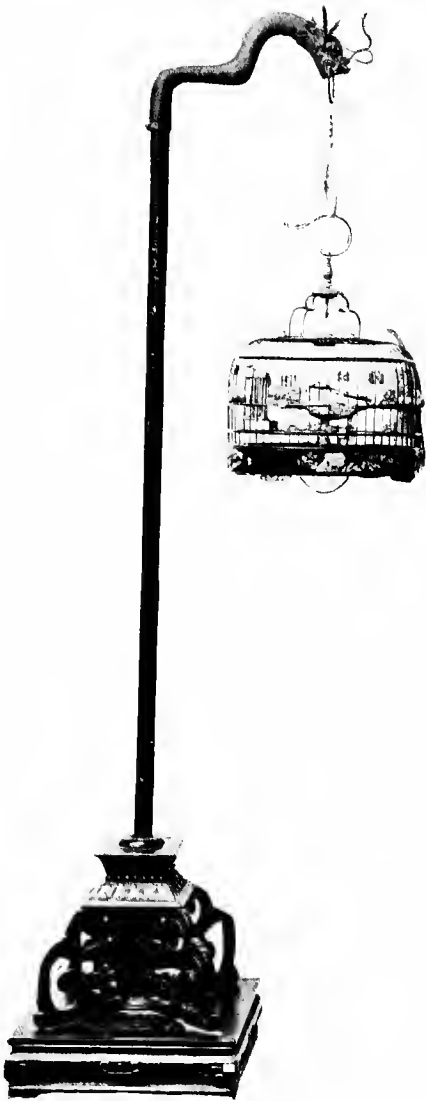
(*Illustrated*)

118—BLACK LACQUER BIRDCAGE (*Ch'ien-lung*)

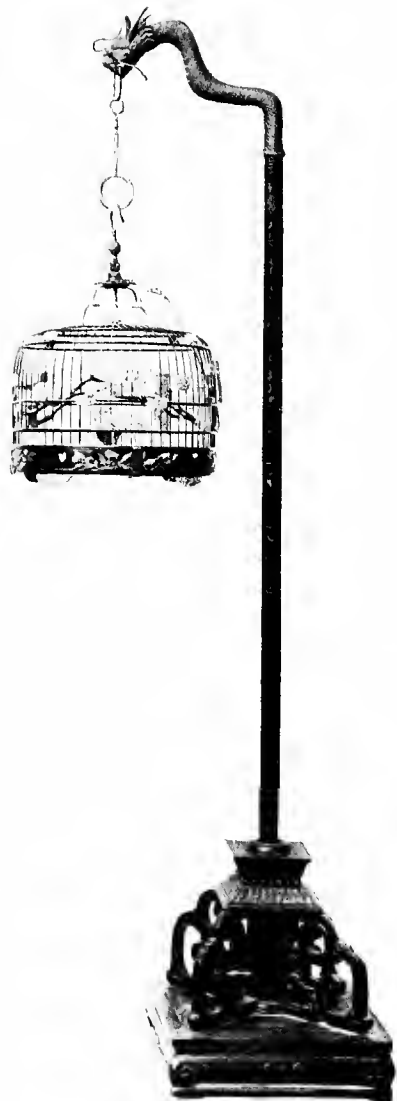
Dome-shape with flattened top, and carved ivory lantern and feet. Around bottom plum, magnolia, peach and chrysanthemum blossoms in soapstone and tinted ivory appliqué. Two cloisonné enamel cups. Carved ivory worm tongs and other utensils, and numerous ivory embellishments carved in gourd and melon motives. Suspended by *fei-ts'ui* and white jade chain from tall teakwood and brown lacquer standard with bronze dragon-head bracket showing greenish patina.

Diameter of cage, 14 inches; height of standard, 6 feet 4 inches.

(*Illustrated*)



No. 118



No. 117

First Afternoon

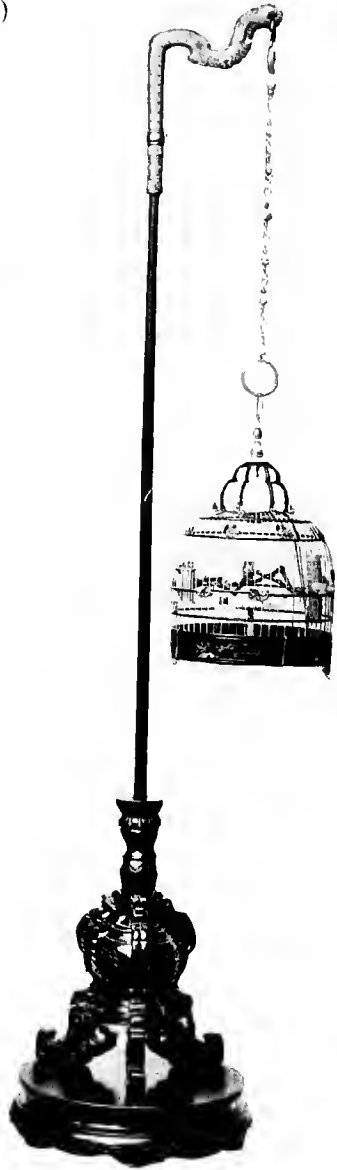
119—IVORY BIRDCAGE (*Ch'ien-lung*)

Dome-shape, the top depressed; jade lantern and feet; brown lacquer ribs and bottom. Bottom incised in a brocade pattern, interrupted by appliqué decorations of the pomegranate, peach and citron in colored stones. Ivory worm tongs with jade handles studded with jewels; agate, jade and cloisonné enamel cups. Jade centre post, jeweled, and various utensils and embellishments in carved and tinted ivory, the motive the Chinese lily. Long chain of *fei-ts'ui* and white jade and amethyst, suspended from a cloisonné enamel dragon bracket capping an oaken staz set into a carved teak-wood circular stand.

Diameter of cage, 13½ inches; height of standard, 8 feet.

120—BLACK LACQUER BIRDCAGE (*Ch'ien-lung*)

Dome-shape with metal lantern; carved ivory feet. Ivory ornaments chiefly in the plum motive, with birds. Cloisonné enamel and *fei-ts'ui* jade cups. Around bottom, in soapstone, ivory and buffalo horn, citron, pomegranate, apple, pumpkin, peach, loquat and melons, a bird, flowers and rocks. Elaborately carved black lacquer stand, penciled in gold, with dragon-head bracket, and chain of *fei-ts'ui* and white jade, turquoise and amethyst.



No. 119

Diameter of cage, 14 inches; height of standard, 7 feet 5 inches.

121—BLACK LACQUER BIRDCAGE (*Ch'ien-lung*)

Dome-shape, with lantern in cloisonné enamel; carved ivory feet. Centre perch and five cups in cloisonné enamel, worm tongs and other utensils and numerous ornaments of carved ivory, the decorative motive principally the plum blossom. Around the bottom, groups of immortals, with pine trees, flowers, birds and animals, in carved ivory delicately tinted. Elaborately carved black lacquer stand, penciled in gold, with dragon-head bracket, with chain of *fei-ts'ui* and white jade, amethyst and turquoise.

Diameter of cage, 14 inches; height of standard, 7 feet 5 inches.

122—BLACK LACQUER BIRDCAGE (*Ch'ien-lung*)

Dome-shape with flattened top; metal lantern. Blue and white and champlevé enamel cups; carved ivory utensils and embellishments principally in the Buddha's-hand citron motive; carved ivory feet. Peach, pomegranate, citron, chrysanthemum and peony branches around bottom, with dragonfly, bird and butterfly among them, in soapstone and tinted ivories appliqué. Tall teakwood standard with dragon bracket in cloisonné enamel.

Diameter of cage, 13½ inches; height of standard, 8 feet.

First Afternoon

123—TEAKWOOD JEWEL BOX (*Ch'ien-lung*)

Oblong, with scrolled corners, and delicately carved with fret moldings. Collapsible dragon handles, a bat door catch, and four low feet, all of gilt. On all four sides an applied decoration of large chrysanthemum sprays in green and white jade. Interior divided by a shelf; at top and bottom shallow drawers.

Height, 10½ inches; length, 15¼ inches; width, 7½ inches.

124—TEAKWOOD JEWEL BOX (*Ch'ien-lung*)

Companion to the preceding.

125—TEAKWOOD AND IVORY JEWEL BOX (*Ch'ien-lung*)

Oblong, on four wheels resting on an elaborate table; the box in two sections, access being gained by lifting off successively the cover and the upper section. Floral decorations, appliqué, in green and white jade and pinkish quartz. On top, a chest of two drawers in the guise of bundles of books, surmounted by what appears to be a pyramidal bundle of scrolls and separates into three boxes of cylindrical pattern. Also on top, a green jade cylindrical vase holding flowers of jade, amber, lapis-lazuli, agate and tourmaline.

Total height, 27 inches.

(Illustrated)

126—TEAKWOOD AND IVORY JEWEL BOX (*Ch'ien-lung*)

Companion to the preceding, with similar embellishments.



No. 125—TEAKWOOD AND IVORY JEWEL BOX

127—ELABORATE JEWEL CABINET

Carved teakwood and ivory, with bamboo details, and varied enhancements. The cabinet rests on a large and intricately carved stand, and has double doors and two exterior and two interior drawers, besides the general inner compartment. Around exterior a bold decoration of landscapes, figures, and household ornaments, in tinted ivories, jade and other materials, appliqué. On top a deep oblong box adorned with jade gourds, a box in the form of a musical instrument, and a white jade plum tree in a green jade vase.

Total height, 3 feet 2 inches.

(Illustrated)

128—ELABORATE TEAKWOOD AND IVORY JEWEL CABINET

Companion to the preceding and similarly embellished, with different top ornaments.

129—TEAKWOOD JEWELRY CABINET (*Ch'ien-lung*)

Rectangular, on a spreading base, with reeding, stepped sections above. Double doors to the main compartment, above and below which are drawers. Front, top and sides elaborately carved in relief and by incision with imperial dragons among waves of the sea. The back, and also the interior of the back, carved with objects of household adornment in low relief.

Height, 2 feet; length, 16¼ inches; width, 10½ inches.

130—TEAKWOOD JEWELRY CABINET (*Ch'ien-lung*)

Companion to the preceding.



No. 127—ELABORATE JEWEL CABINET



131—GRAND IVORY STATUETTE

Tall standing figure of a great lady richly costumed, elaborately carved and finely engraved. By delicate incision her coat is patterned throughout in a swastika grill, and her skirt in a floral diaper, while on her cowl or head covering are cloud scrolls. Flowers in relief deck her hair and Oriental ornaments carved and pierced hang about her. She carries a long sword and is in the act of drawing it. Rich and mellow patina in ripe yellow and a warm orange-brown. Elaborately carved base and lacquered balcony-stand.

Height of figure, 18 $\frac{1}{4}$ inches; with base, 19 $\frac{3}{8}$ inches; the whole on stand, 22 $\frac{3}{4}$ inches.

DECORATED AND SINGLE-COLOR PORCELAINS

132—BLUE AND WHITE BOTTLE-SHAPED VASE (*K'ang-hsi*)

Fine hard white paste, with a glaze of notable brilliancy and a striking decoration of chrysanthemum scroll in rich sapphire-blue of two tones. On the neck two differing borders.

Height, 5½ inches.

133—PEAR-SHAPED BOTTLE (*Ch'ien-lung*)

With short neck and flaring lip, and low foot. Covered with a finely crackled glaze of mirror brilliancy, in that color-variant of the turquoise glazes that has been denominated peacock-blue.

Height, 5¾ inches.

134—SOFT PASTE DECORATED VASE (*Yung Ch'eng*)

Slender inverted pear-shape with truncate neck and lightly molded lip; thin, light and delicate, the so-called "soft paste" porcelain. Brilliant glaze of rich, creamy tone, finely crackled, over a decoration lightly etched in the paste, consisting of three scroll medallions, a key-fret at the foot, and three pairs of encircling rings.

Height, 5¾ inches.



135—APPLE-GREEN BOTTLE-SHAPED VASE (*K'ang-hsi*)

Body ovoidal; graceful neck slightly expanding toward the mouth. Dense hard paste, the exterior glazed in a fine and soft apple-green which on the underbody shows a delicate iridescent lustre, and throughout has a reticulate crackle in self-color and *café-au-lait*, which is further traversed by rambling lines of a broader crackle. Within neck and underneath foot a rice-color glaze, crackled, and around the foot a brownish iridescent wash-glaze.

The remark may be permitted that true apple-greens have become such a rarity that the appearance of one is almost an event in the pursuits of the searchers in China.

Height, 5 $\frac{7}{8}$ inches.

136—PEACHBLOOM AMPHORA (*K'ang-hsi*)

Very slender with narrow, flat foot, delicate neck and lightly spreading lip. Softly brilliant glaze of the pure and rich peach-bloom pink, with small patches and spottings of deeper tone, and the slight green fleckings that are so greatly prized, the latter being found the more conspicuously under and inside the lip. Underneath foot the six characters of the reign in deep blue under a pure white glaze. A part of the neck has been restored, the greatest depth of the restoration being one-half inch. Carved stand of green-tinted ivory.

Height, 5 $\frac{3}{4}$ inches.

137—CLAIR-DE-LUNE COUPE (*K'ang-hsi*)

Fine white porcelain coated on both surfaces with a brilliant *clair-de-lune* glaze of delicate bluish-lilac tone and mirror properties. Ovoidal in shape, with shoulder rounding into a shallow depression surrounding the small mouth, with short, molded lip, and having a fine unglazed foot. Under-foot recess in pure white, with the six characters of the reign in rich underglaze blue.

Diameter, 4 $\frac{1}{4}$ inches.

138—RICH TURQUOISE-BLUE BOTTLE (*Ch'êng Hua*)

Slender elongated pear-shape, the neck defined by a light molding, lips slightly spreading; bold foot. Dense, resonant Ming porcelain, with a sweeping and vigorous decoration of two flying phoenixes among the clouds, modeled in low relief and etched, in the paste; the whole covered with a mottled turquoise-blue glaze of fine quality, brilliant, and minutely *truité*. Beneath the foot the six characters of Ch'êng Hua in a deep Ming blue under a glaze of soft cream-white.

Height, 8 $\frac{3}{4}$ inches.



139—PEACHBLOOM WATER JAR (*K'ang-hsi*)

Writer's water receptacle in hemispherical form, with small mouth. Fine hard paste, the surface lightly etched with three conventional medallions, and glazed in the richest tones of the peachbloom family, the delicate greens in this example covering the greater area and exhibiting in spots a rich azure lustre. Under the white-glazed foot the six-character mark in brilliant blue. Supplied with metal lip. Elaborately carved and pierced ivory stand, green tinted.

Diameter, 5 inches.

140—CORAL-RED VASE (*Ch-ien-lung*)

Enlarged pear-shape, tapering to a short neck that expands in a trumpet lip; deep, flaring foot. Rich coral-red glaze of even quality, and subdued mirror properties, with a soft lustre whose vague depths enhance the golden and purple tones of a quiet metallic iridescence. Interior of mouth and neck white.

Height, 8 $\frac{7}{8}$ inches.



141—TALL SANG-DE-BŒUF VASE (*K'ang-hsi*)

Heavy porcelain, shaped in a long, cylindrical form though with a slightly ovoidal contour, with narrow shoulder and short neck which shows a slight molded enlargement shortly above the shoulder. Rich and very brilliant crackled glaze in the varying deep and lighter fluid tones of the *sang-de-bœuf*, and the darker clottings and changed tones of the coagulating blood. In the misfortunes of time the rich specimen has suffered damage that has sometime led to grinding down at foot and neck and supplying the lip with a copper rim.

Height, 11 $\frac{1}{8}$ inches.



142—BRONZE STATUETTE (*Ming*)

Standing figure of a Lohan, on a hexagonal base. He is in flowing robes bordered with incised embroideries, his arms folded under them, and holds a *ju-i* sceptre against his left arm. His powerful head is turned to his left. Patina of golden-bronze tone, greenish-brown, and black.

Height, 8 $\frac{7}{8}$ inches.

FUCHIEN STATUETTES

143—FUCHIEN STATUETTE (*Ming*)

The goddess of mercy seated, her robes spreading about her, both hands concealed but one knee raised and its bare foot projecting. She wears a tiara and cowl and a necklace of beads. Brilliant cream glaze.

Height, 7 $\frac{1}{8}$ inches.

144—FUCHIEN STATUETTE (*Ming*)

The goddess of wisdom seated, her hair dressed low, a necklace in relief across her nude breast, her ample robes flowing loosely and spreading about her feet. Her left arm drops upon an arm-rest and in her hand she holds a scroll; her right hand rests upon her raised knee. Rich cream glaze, with a crackled *café-au-lait* area back of the neck.

Height, 7 $\frac{1}{4}$ inches.

145—FUCHIEN STATUETTE (*Ming*)

Kuan-yin with tiara and cowl, seated, with hands concealed under her robes. Cream-white glaze of soft lustre and even quality.

Height, 7 $\frac{7}{8}$ inches.

146—FUCHIEN STATUETTE (*Ming*)

The goddess of mercy in loose flowing robes, seated, right knee raised and the hand resting on it holding a rosary; her left foot, bare, projects from the folds of the robe. She wears a chrysanthemum crown, high headdress and cowl. Rich cream-white glaze of soft and brilliant lustre.

Height, 8 $\frac{3}{8}$ inches.

First Afternoon

147—FUCHIEN STATUETTE (*Ming*)

Kuan-yin standing on a rock base, her hair dressed high over her head, without cowl, the loose ends of her girdle swinging clear of her sides as they sweep downward. Her arms cross in front of her, and in one hand she holds a scroll while the other supports a corner of her robe. At her feet a fish and spray of leaves in a bowl. Brilliant cream glaze.

Height, 9 inches.

148—FUCHIEN STATUETTE (*Ming*)

Tall standing figure of Kuan-yin, with the sacred boss and hair dressed low, without cowl, her loosely flowing robes blowing in the breeze, riding the waves on the back of a crustacean. In her left hand she holds a *ju-i* sceptre. Rich, soft and brilliant cream-white glaze of even quality.

Height, 10¾ inches.

(*Illustrated*)

149—FUCHIEN STATUETTE (*Ming*)

Kuan-yin seated on a rock throne, right knee raised and bare foot protruding from her robes, both hands resting on the raised knee and in one a scroll. Back of her a bundle of books. Brilliant creamy glaze.

Height, 12 inches.

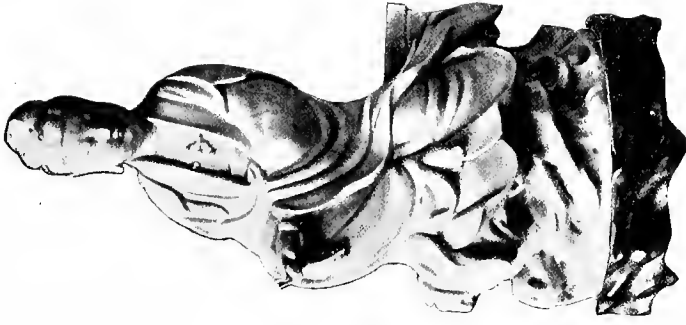
(*Illustrated*)

150—FUCHIEN STATUETTE (*Ming*)

The "Thousand-armed Kuan-yin," seated, on a lotus flower, the lotus mounted and revolving upon a teakwood stand carved in wave motive. Actually the goddess has nine pairs of arms, twelve of the hands holding symbols and the others in significant attitudes. She wears a crown and jeweled headdress, and other jewels. Brilliant glaze of rich cream-white.

Height (with stand), 12⅝ inches.

(*Illustrated*)



No. 149



No. 150



No. 148



No. 151



No. 152

151—IMPERIAL YELLOW JAR (*K'ang-hsi*)

Ovoid with short neck and large mouth with lightly molded lip, and broad foot. A light ridge line circles the mid-body. Luminous glaze in imperial yellow of pale canary note, on exterior; interior white. Under foot the mark of the reign in blue. (Slight chips in lip restored to place.)

Height, 8 $\frac{5}{8}$ inches.

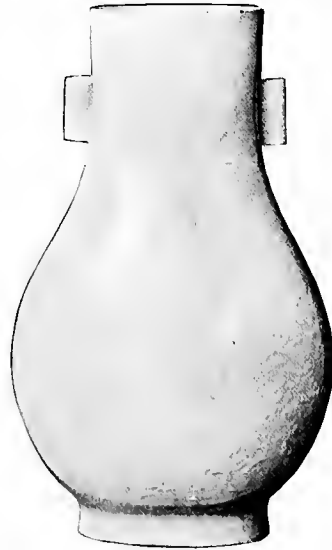
152—IMPERIAL YELLOW JAR (*K'ang-hsi*)

Ovoid with short neck and large mouth, and broad foot. Circled by a light ridge about the mid-body. Exterior coated with a brilliant imperial yellow glaze of pale canary tone, with metallic lustre; interior white. Under foot the six characters of the reign in brilliant sapphire.

Height, 8 $\frac{7}{8}$ inches.



No. 153



No. 154

153—TING-YAO VASE (*Sung*)

Enlarged, flattened pear-shape, with oval neck, mouth and foot. Two vertical tubular handles on neck. Low relief decoration of the rock peony in luxuriant blossom, birds and butterflies, with key-fret borders at neck and foot. Cream glaze of unctuous brilliancy, with crackle in self-color and *café-au-lait*.

Height, 13½ inches.

154—TING-YAO VASE (*Sung*)

Companion to the preceding (No. 153), with restoration at top of one handle.

Height, 13¼ inches.

155—TALL CRACKLED BOTTLE-FORM VASE (*Ming*)

Elongated pear-shape, with neck expanding to a flattened lip; large, deep foot. On the shoulder two elephant-head and ring handles in relief. Cream glaze with fish-roe crackle in delicate *café-au-lait* lines, which is cut by the long lines of a larger crackle. Known as Ming Crackled Ware.

Height, 15 $\frac{7}{8}$ inches.

(Illustrated)

156—TALL CRACKLED BOTTLE-FORM VASE (*Ming*)

Bulbous pear-shape with full, truncate neck slightly expanding at the flat lip; bold foot. Rich cream-toned glaze of unctuous lustre, with a fine *café-au-lait* crackle, and a coarse crackle in black lines. Neck incised and modeled with a primitive decoration of indeterminate form. Known as Ming Crackled Ware. (Slight restoration at one point of lip.)

Height, 14 $\frac{3}{4}$ inches.

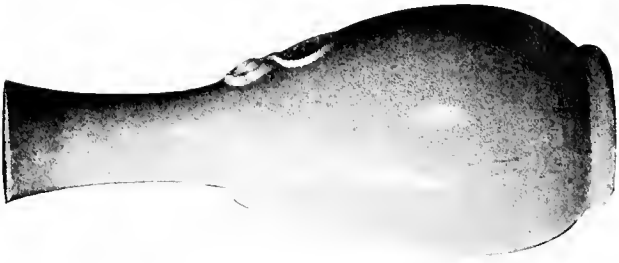
(Illustrated)

157—TALL CRACKLED JAR (*Ming*)

Inverted pear-shape with high shoulder and short neck, flanged at the root, and large mouth; beveled foot. Rich yellow-cream glaze of dull lustre, extending to the interior where much of it is a cream-white. *Café-au-lait* crackle of small spaces, and a broader crackle in darker lines. Known as Ming Crackled Ware.

Height, 14 $\frac{1}{2}$ inches.

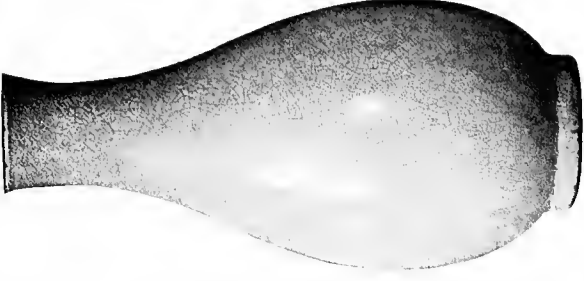
(Illustrated)



No. 155



No. 157



No. 156

VASES AND JAR OF THE MING PERIOD

First Afternoon

158—MIRROR-BLACK CLUB-SHAPED VASE (*K'ang-hsi*)

Oviform body, the neck ending in a short spreading lip. Dense, heavy, resonant porcelain, invested with a mirror glaze of rich black, revealing the imprint and lusted traces of its original elaborate decoration in gold.

Height, 17 $\frac{1}{8}$ inches.

159—MIRROR-BLACK CLUB-SHAPED VASE (*K'ang-hsi*)

Oviform body with perfect foot, the neck ending with a short spreading lip. Rich black monochrome glaze of the most brilliant, smooth mirror surface.

Height, 17 $\frac{3}{4}$ inches.

160—MIRROR-BLACK CLUB-SHAPED VASE (*K'ang-hsi*)

Cylindrical with flattened shoulder, the body slightly drawing in to the well-defined foot; flange lip. Brilliant monochrome glaze of rich black, with mirror surface.

Height, 17 $\frac{5}{8}$ inches.

161—MIRROR-BLACK CLUB-SHAPED VASE (*K'ang-hsi*)

Cylindrical body slightly drawing it at foot; flange lip. Mirror-black glaze of misty lustre, with delicate *peau-d'orange* surface, bearing the faint imprint of landscape and boating scenes, with inscriptions, of an early decoration in gold.

Height, 18 $\frac{1}{2}$ inches.

162—MIRROR-BLACK BEAKER-SHAPED VASE (*K'ang-hsi*)

Sonorous porcelain, clothed in a smooth and glowingly brilliant glaze of rich mirror-black, with detectible imprints of its early golden decoration, an elaborate one including forceful figures.

Height, 18 $\frac{1}{8}$ inches.



163—PAIR IMPERIAL PEACH PLATES (*Yung Chêng*)

Delicate, musical, semi-eggshell porcelain, glazed in the pure, rich white of the Yung Chêng reign, decorated in the characteristic rose and greens,—with darker colors for the branches and pink and white for the blossoms,—with peach trees in fruit and flower, and coral bats flying above them. The decoration extends over both surfaces of the plate, and includes, on each plate, eight peaches and five bats. Under the bottom the six-character mark of Yung Chêng in blue within a blue double square.

Diameter, 8¼ inches.

164—PAIR IMPERIAL JARS WITH COVERS (*Ch'ien-lung*)

Remarkable specimens, perfect in every respect; flawless. Imperial Palace pieces. Ovoid in shape, with short neck gracefully curved and lightly molded lip. Mandarin-cap shaped covers, inseting, with conical button finials. Glazed throughout in the fairest turquoise-blue, of soft brilliancy, the blue interrupted under foot by a white square bearing the imperial seal in vermilion. Brilliant *mille-fleurs* decoration in *famille-rose* enamels and gold, the flowers disposed in sprays and detached buds and blossoms, and including daffodils, heliotrope and hydrangeas, morning-glories and orchids, the cock's-comb and hibiscus, pear blossoms, poppies, dragon-lilies, the peony, lotus and chrysanthemum, japonicas and daisies, peach and cherry blossoms, carnations, begonias, magnolia and the Chinese plum.

Height with cover, 16 inches.

(*Illustrated*)

165—CELADON GARNITURE DECORATED IN COLOR (*K'ang-hsi*)

Consisting of three pieces, commemorating the celebrated eight horses of the Chou emperor Mu Wang, among pine trees. The ground glaze is a very brilliant pale grayish seagreen, interrupted by the horses, trees and rocks modeled in light relief and painted in a fine quality of blue of variable tone, white, and varying peach-reds.

(a) Oviform temple jar, with six of the horses, the other two horses undoubtedly decorating the cover, which is missing.

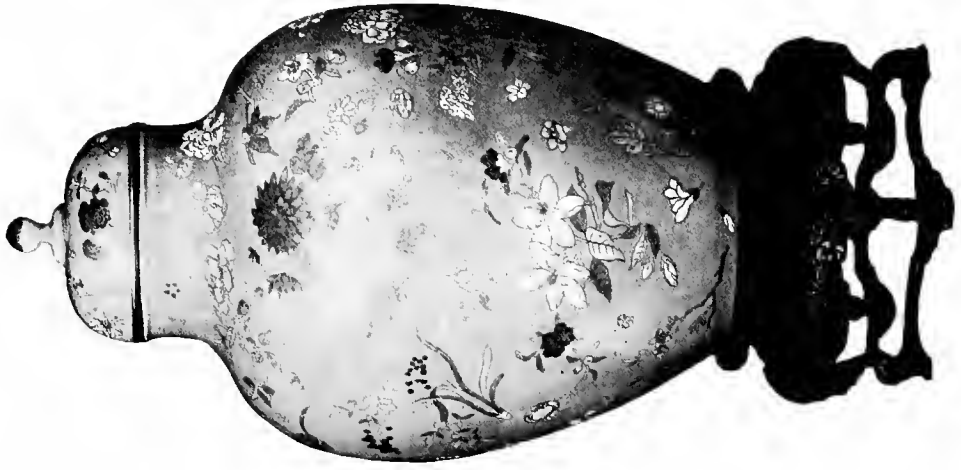
Height, 10 $\frac{1}{8}$ inches.

(b) Tall beaker, with five of the horses on the lower section and three above. Mark, a blue leaf.

Height, 17 $\frac{1}{4}$ inches.

(c) Tall beaker, companion to the preceding and with the same mark.

Height, 17 $\frac{1}{2}$ inches.



No. 164—PAIR IMPERIAL JARS WITH COVERS



166—IMPERIAL FISH BOWL (*Ch'ien-lung*)

Ovoidal or semi-egg-shape, the rounded end downward, so that it will rest only in a stand, the mouth slightly extended by a deep flange lip. Hard paste of musical tone, glazed in white on the interior of the bowl. The exterior is glazed in a rich yellow of deep canary tone, which shows areas of a fish-roe crackle. The yellow glaze is interrupted by four large medallions reserved in white, bearing in red on a golden swastika lattice the four characters restricted in application to the Emperor alone, expressive of the loyal wish that he live forever. Further decoration in enamels, coral and gold, of bats, peaches, the swastika and the endless-knot.

Diameter, 8 $\frac{7}{8}$ inches; height, 7 $\frac{3}{4}$ inches.

BRONZES AND CLOISONNÉ ENAMELS

167—BRONZE ANIMAL STATUETTE (*Sung*)

A stag exhibiting some remarkable modeling, harnessed and accoutred to bear a burden, probably an immortal, possibly in the nature of vase or sacrificial vessel, holds in its mouth a branch of the *polyporus lucidus* and turns its body in graceful curve till its raised head faces backward. Its tasseled trappings, in relief, are engraved with scrolls and floral medallions, and it retains extensive vestiges of a rich gilding. Warm brown patina verging upon black, with patches of green. Carved teakwood stand.

Height, 21¼ inches; with stand, 24½ inches.

168—CLOISONNÉ ENAMEL JARDINÈRE (*Ch'ien-lung*)

Inverted bell-shape, of hexagonal outline. Conventional lotus decoration with *ju-i* border, in soft and brilliant colors on a light turquoise-blue ground. Architectural stand of Peking enamel, painted in bright colors with floral motives and an archaic phoenix scroll.

Height, 9⅞ inches.

169—CLOISONNÉ ENAMEL JARDINÈRE (*Ch'ien-lung*)

Companion to the preceding.

170—LARGE BRONZE SACRIFICIAL VESSEL (*Hau*)

Ovoidal with a low and broad flat foot which has a border of circular ribs underneath. Broad, flaring, concave lip, with an exterior molding. A low relief band encircles the mid-body, cut by an incised ring within either edge and ridged at its centre, and supporting two primitive ornamental handles in relief. Rich, dense patina in varying tones of green and brown on all surfaces, with grayish earthy incrustations.

Height, 7⅞ inches; diameter, 17½ inches.

PLANT JARS

171—LAPIS-BLUE PLANT JAR (*Ming*)

Slightly ovoidal, broad of mouth and foot, with relief hoops effected by incision about top and base, each studded with large bosses. Two ornamental lion-head and ring handles in bold relief. Exterior glazed in a rich and brilliant lapis-lazuli blue, interior in a grayish turquoise-green, both *truité*; at the bottom of the interior the glaze thickens in a "pond" of emerald-green with bolder crackle.

Height, 6 $\frac{3}{4}$ inches; diameter, 11 inches.

172—TURQUOISE-BLUE FISH BOWL (*Ming*)

Shallow ovoidal form modeled in pointed foliations, with a short skirt which also is foliated and five monster-head monster-head feet. Pottery. Luminous glaze of mottled turquoise-blue finely crackled.

Height, 4 $\frac{5}{8}$ inches; diameter, 15 $\frac{1}{4}$ inches; height with stand, 11 inches.

173—TURQUOISE-BLUE FISH BOWL (*Ming*)

Shallow ovoidal form modeled in pointed foliations, with a short skirt which also is foliated and five monster-head feet. Pottery. Mottled turquoise-blue glaze of dull lustre, minutely crackled.

Height, 4 $\frac{7}{8}$ inches; diameter, 16 inches; height with stand, 11 $\frac{1}{2}$ inches.

174—CELADON TRIPOD JARDINIÈRE (*Ming*)

Ovoid with narrow sloping shoulder, short cylindrical neck and wide mouth, with flanged lip; large stump feet. On the body a luxuriant leaf and flower scroll in relief; on the neck an incised primitive decoration. The shoulder is studded with twelve small rosettes in low relief. On exterior and interior a brilliant celadon glaze, of pure sea-green lightening to grayish tones, boldly crackled in self-color and *café-au-lait*.

Height, 8 $\frac{3}{8}$ inches; diameter, 14 $\frac{1}{2}$ inches.

175—CELADON FISH BOWL (*Ming*)

Shallow ovoidal form with round, lightly molded lip and large, low foot. Stone-weight porcelain of prolonged sonority. The entire exterior covered with a luxuriant floral decoration modeled by incision in the paste, the interior with further floral adornment and a bold wave border, similarly executed. Rich and brilliant sea-green glaze. Has teakwood stand of unique form.

Height, 5 inches; diameter, 18 inches.

176—PAIR CELADON JARDINIÈRES (*Ch'ien-lung*)

In broad, ample, squat or compressed beaker-form, with bold foot and flattened, foliated lip. Heavy, stone-weight porcelain of sonorous tone. The bulbous main section decorated with lotus medallions centered by Shou characters, embraced within interlocked and detached foliations, the neck with a conventional plantain leaf border and the base with a leaf-and-tongue border, all in low relief. Scrolling foliations border the top of the rim. Brilliant glaze of rare and delicate sea-green. Bottom pierced with one-inch orifice. Red lacquer table-stands, engraved with lotus and landscape decoration colored a soft and delicate yellow.

Height, 11¼ inches; diameter, 17¼ inches; height with stand, 31½ inches.

177—FAMILLE-ROSE FISH BASIN (*Yung Chêng*)

Shallow and broad, with flat, projecting rim and broad, deep foot, the sides ovoidal. The enamel decoration at the bottom of the interior pictures a lotus pond in blossom, with king-fishers and butterflies on the wing; at the base of the sides are lotus flowers floating on waves of the sea, with swallows flying above the tossing spray. The surface of the rim is bordered with a continuous key-fret. On the exterior are storks flying among cloud scrolls, and a repetition of the sea-wave motive, with two relief bands of woven-bamboo pattern. Imperial seal under the bottom.

Height, 4¾ inches; diameter, 16 inches.

First Afternoon

178—LARGE CELADON PLAQUE (*Ming*)

Sonorous stone-weight porcelain of musical, gong tone, in spreading ovoidal shape with flaring rim and broad, bold foot. The inner sides of the cavetto are lightly fluted, and the whole, with the exception of a broad ring under the foot, is clothed in a brilliant monochrome glaze of pure grayish sea-green, of even quality.

Diameter, 18 inches.

179—FLAMBÉ JARDINIÈRE (*Ch'ien-lung*)

Deep, ovoidal, with large mouth and round lip. Resonant, stone-weight porcelain; the exterior covered with a mirror glaze of the transmutation furnace, in tones of rich purple, blue and gray, the underbody showing a reticulate crackle. The soft grayish glaze, with the crackle, covers the entire interior. Slight crack, barely perceptible, at lip. Carved teakwood stand.

Height, 13 inches; diameter, 18¼ inches; height with stand, 25¼ inches.

180—FAMILLE-ROSE FISH BOWL (*Yung Chêng*)

Ovoid, with rounded lip about a wide mouth. Brilliant white glaze with a sporadic crackle in brown lines, adorned with butterflies and detached sprays of hydrangeas, japonicas, roses, peonies, chrysanthemums and other flowers.

Height, 9¾ inches; diameter, 15¼ inches.

181—LAGRE FISH JAR (*Chia Ching*)

Ovoid with short neck and large mouth, with molded lip. Luminous glaze of soft white, decorated with swimming fishes in divers attitudes, among aquatic plants and sinuous water-grasses, with detached blossoms and florets floating on the surface. The decoration is in pale coral and dark vermilion, yellow green, and rich sapphire-blue. Leaf border in blue at the base, paneled border in the main colors on shoulder. Under foot: *Ta Ming Chia Ching nien chih*. Has tall table-stand of carved teakwood.

Height, 13½ inches; diameter, 16¼ inches; height with stand, 36½ inches.



182—PAIR IMPERIAL BLUE AND WHITE JARDINIÈRES (*Ch'ien-lung*)

Ovoid. Decorated in rich sapphire-blue of two tones with five of the imperial five-clawed dragons among cloud and flame scrolls, about the body; on the shoulder a border of sceptre-heads reserved in white in a blue ground, under a border of sea waves similarly reserved, which is repeated around the base. Imperial seal mark in blue.

Height, 16 $\frac{3}{4}$ inches; diameter, 24 inches.

First Afternoon

183—BLUE AND WHITE JARDINIÈRE (*K'ang-hsi*)

Deep ovoid form with heavy, rounded lip, below which is a low, encircling molding. Stone-weight porcelain responding in a rich gong tone when struck. Limpid white glaze, decorated in four large panels with landscapes and figures, boats, and song birds among magnolia trees, in rich tones of brilliant sapphire-blue and white reserve. Three borders. Skeleton table stand of teakwood.

Height, 14 inches; diameter, 14¼ inches; height in stand, 35 inches.

184—BLUE AND WHITE JARDINIÈRE (*Chia Ching*)

Very slightly ovoidal and flaring, with heavily molded and flattened lip. Decorated in the rich Mussulman blue with boldly painted four-clawed dragons, aquatic plants and floral sprays. On the lip: *Ta Ming Chia Ching nien chih*. Six-legged teakwood stand carved as bamboo trunks.

Height, 12 inches; diameter, 24 inches; height with stand, 34 inches.

185—BLUE AND WHITE JARDINIÈRE (*Chia Ching*)

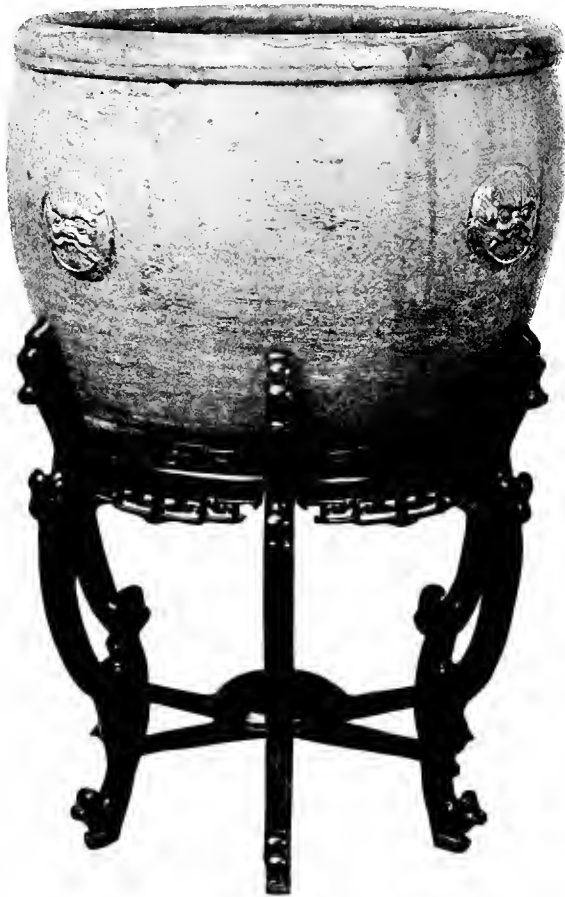
Flaring and ovoidal with heavily molded flattened lip. Decoration in deep Mohammedan blue of two imperial dragons in pursuit of the flaming jewel of power among cloud scrolls. On lip: *Ta Ming Chia Ching nien chih*. Teakwood stand with legs carved as bamboo stalks in bunches of four.

Height, 13½ inches; diameter, 30½ inches; height with stand, 38½ inches.

186—IMPERIAL BLUE AND WHITE JARDINIÈRE (*Ch'ien-lung*)

Slightly ovoidal contour, broadly flaring and deep, with broad flat lip and a half-round molding below it. Painted in two tones of a soft rich blue on a brilliant greenish-white, with imperial dragons emerging from the sea and pursuing the jewel of omnipotence among the clouds, and the flame scrolls of their fiery breath. On the lip a sceptre-head border.

Height, 17½ inches; diameter, 27 inches.



187—LARGE TURQUOISE-BLUE JARDINIÈRE (*Ming*)

Deep ovoidal form with mammoth lip. Decoration, four animal-mask medallions in relief. Light turquoise-blue crackled glaze, mottled and of subdued lustre and unctuous quality, occasionally thickening in dark blue patches. The same glaze continues on the interior. Has six-legged carved teakwood stand.

Height, 21 inches; diameter, 31 inches; height with stand, 42½ inches.

First Afternoon

188—DECORATED JARDINIÈRE (*Ming*)

Ovoid with a squat bell-shaped foot, flat, flanged lip, and molded rings encircling body near base. Exterior in a brilliant emerald-green, mottled, with foliated medallions of peony, chrysanthemum, camellia and lotus flowers modeled in relief and glazed in a light yellow. Around base and foot are formal borders similarly modeled and glazed, and the lip is similarly treated. Has carved teakwood table-stand.

Height, 17 inches; diameter, 29½ inches; height with stand, 48 inches.

(*Illustrated*)

189—DECORATED JARDINIÈRE (*Ming*)

Oviform, straightening to cylindrical in a band below the round lip; incised rings encircling the underbody. The cylindrical band is in relief, with a sectional decoration in higher relief of galloping horses and flying birds, and on the body of the jar are four oval medallions depicting mandarin ducks and fishes among lotus flowers, in bold relief. Brilliant glaze in mottled emerald-green covering the exterior of body and lip, while the relief decorations are glazed in yellow, brown and *aubergine*. Heavily carved six-legged teakwood stand.

Height, 21½ inches; diameter, 26½ inches; height with stand, 45 inches.

190—LAPIS-BLUE JARDINIÈRE (*Ming*)

Ovoid with a slight shoulder and round lip, and broad flat foot. Rich glaze of mirror brilliance in a deep lapis-lazuli blue with a delicate, minute crackle. Interior in a rich cream-yellow glaze boldly crackled. Carved teakwood table-stand.

Height, 19 inches; diameter, 29 inches; height with stand, 46½ inches.



No. 188—DECORATED JARDINIÈRE



191—LARGE DECORATED JAR (*Ming*)

Oviform with steep shoulder and short upright lip, with large mouth and relatively narrow foot. Brilliant glaze of soft creamy white with delicate crackle, decorated in a warm, rich and variable brown with bold floral designs in three bands separated by cursive scroll borders. Middle band interrupted by an inscription stating that the jar was made in the mid-summer of the twenty-seventh year of Wan Li (A. D. 1600), and giving the potter's name. Five-legged teakwood stand.

Height, 34 inches; diameter, 26 inches; height, with stand, 50 inches.

192—TURQUOISE JARDINIÈRE (*Ming*)

Ovoid with thickened lip; decoration, a ring of large bosses under the lip and above the foot, and four medallions of animal masks in relief. Greenish turquoise crackled glaze mottled almost in a splash effect with thickened patches of dark grayish-blue.

Height, 17½ inches; diameter, 28 inches; height with stand, 40 inches.

193—TURQUOISE JARDINIÈRE (*Ming*)

Ovoid with deep lip; studded with bold bosses in an encircling ring under the lip, and another ring near the base, and decorated with four monster-head medallions modeled in relief. Over all a greenish turquoise crackled glaze of moist brilliancy, mottled by a thickened flow in deep grayish-blue. Six-legged teakwood dragon-stand.

Height, 18½ inches; diameter, 28 inches; height with stand, 39½ inches.

194—LARGE JARDINIÈRE (*Yuan*)

Deep ovoidal form with full round lip. Lower body encircled by a band of incised rings. The body invested with a rich glaze of deepest egg-plant purple of naturalistic surface, and the lip and interior with a glaze of greenish turquoise-blue, finely crackled. Teakwood stand.

Height, 27 inches; diameter, 32 inches; height with stand, 48 inches.

SECOND AND LAST AFTERNOON'S SALE

SATURDAY, JANUARY 27, 1917

AT THE AMERICAN ART GALLERIES

BEGINNING AT 2.30 O'CLOCK

Nos. 195 to 326, inclusive

PANELS AND SCREENS

195—BLACK LACQUER HANGING PANEL (*Ming*)

Painted in soft, warm colors of low tone, details inlaid in mother-of-pearl, with distinguished figures emerging from palace buildings into a garden, with balconied terraces and bridges over streams, and in the distance an equestrian facing a bridge.

Height, 16 inches; width, 12½ inches.

196—BLACK LACQUER HANGING PANEL (*Ming*)

A landscape painting in soft and delicate coloring, picturing a barge bearing a distinguished being approaching a building where figures are seen, and before which others, attended by deer and a stork, await his arrival at the landing place. In the distance, an equestrian amid another group of figures. On the reverse a seven-column inscription in brown lacquer and gold.

Height, 17⅞ inches; width, 15 inches.

Second and Last Afternoon

197—DECORATIVE PANEL (*Ch'ien-lung*)

On the obverse a retreat at the shore line among the mountains, with figures in a summer house, carved and laid with kingfishers' feathers, and applied on a black velvet ground. Aloft a long inscription with seals, in carved ideographs inlaid with the kingfishers' feathers. Reverse inlaid with floral sprays and grasses in soapstone. Teakwood frame with carved ornamentation.

Height, 18½ inches; length, 23 inches.

(*Illustrated*)

198—DECORATIVE PANEL (*Ch'ien-lung*)

Companion to the preceding (No. 197), with a different landscape, and the inlays on the reverse lotus plants and grasses. Same dimensions.

199—PAIR CARVED CINNABAR LACQUER TABLE SCREENS (*Ch'ien-lung*)

Oblong panels of cinnabar lacquer, set in frames of the same, the whole elaborately carved. Palace gardens in a mountain paradise are alive with immortal sages in happy mood, more than two score on one panel and nearly as many on the other, the carving in relief on incised fret grounds. On the reverse are luxuriant displays of peonies, etched. The frames are carved in relief with floral and angular scrolls.

Height, 23½ inches; length at base, 23¼ inches.

200—PAIR CARVED TABLE SCREENS WITH IVORY FIGURE GROUPS (*Ch'ien-lung*)

Teakwood panels carved in high relief with trees and rocks, and etched with swirling waters, the landscape occupied on each screen with a group of nine sages boldly carved in ivory of mellow tone, their robes delicately tinted and etched. In one they are discussing the lotus philosophy, with admiration of the beauties of the flower. In the other they are rejoicing in the power which sages enjoy. On each panel long inscriptions, incised and gilded.

Height, 24¾ inches; length at base, 24½ inches.



No. 197—DECORATIVE PANEL

Second and Last Afternoon

201—PAIR WALL PICTURES IN CARVED IVORIES (*Ch'ien-lung*)

In one, literary ladies reading or at games, pause to look out from open houses upon a procession in which a female figure riding a sheep and bearing a *ju-i* sceptre is hailed and honored by numerous attendants. On a stairway and bridge leading to the houses other figures add their salutations, a pine tree and low-hanging clouds overhead. Buildings and figures in relief, tinted and decoratively painted; the buildings with much carved grill work.

In the second picture young ladies with musical instruments are on the lower floor of a building, on the second floor is a domestic scene, and in the garden below boys are at play. Carved teakwood frames.

Height, 22½ inches; length, 25⅝ inches.

202—BLACK LACQUER HANGING PANEL (*Ming*)

Painted in polychrome in soft vegetable colors with the design of a five-clawed dragon, facing full toward the spectator, his sprawling and sinuous body encompassing in its coils the flaming jewel. Flame and cloud scrolls and dancing waves appear about him, within a foliated medallion, and further cloud scrolls fill the spandrels beyond the medallion, while the frame is painted with still more of the conventional cloud scrolls.

Height, 30 inches; length, 38¼ inches.

203—RECTANGULAR BLACK LACQUER TRUNK (*Ming*)

Painted in red, green and yellow lacquer with bamboo and blossoming peach trees, birds, butterflies and bees, and inlaid with peonies in soapstone and mother-of-pearl. Bronze fittings engraved with bats, clouds and Shou medallion.

Height, 23¼ inches; length, 37¼ inches; width, 24½ inches.

203A—LACQUER COATED LEATHER OBLONG TRUNK (*Ch'ien-lung*)

Embossed decoration gilded, on the front the hundred antiques and on the ends flowers and fruits.

Height, 18 inches; length, 34 inches; width, 22 inches.



204—CLOISSONÉ ENAMEL WALL PICTURE (*Ch'ien-lung*)

On a black lacquer ground of dull lustre, almost of matt surface, a fine architectural structure effected in bold relief rises out of rolling waves carved in a higher relief, the building executed in cloisonné enamel of varied colors with gilding. On the reverse, cloud-scrolls and flying storks bearing rods and fungus in the bills, in mother-of-pearl appliqué above a leaning pine tree at the sea's edge.

Height, 38 inches; width, 24 $\frac{3}{8}$ inches.

Second and Last Afternoon

205—IVORY-PANELED TABLE SCREEN (*Ch'ien-lung*)

Quadrangular screen frame and stand of teakwood, carved in relief with squirrels among the grapes, and immortals among pines with bats hovering near. The screen panel displays a sea and shore of carved teak, with ivory boats propelled by numerous oars, and ivory figures in divers attitudes, as well as ivory palaces among the clouds showing intricately carved lattices and variously tinted. Bamboo trees are applied in metal.

*Height, 33½ inches; width, 31½ inches; height of panel, 23½ inches;
Length, 27½ inches.*

206—IMPERIAL PALACE TABLE SCREEN (*Ch'ien-lung*)

An elaborate composite production. The screen proper is a wood panel painted in atmospheric effect, with the contour of a large ovoid vase, the vase form emphasized by a double frame, a broad teakwood frame with gourd vines in fruit and flower and swastika lattices inlaid in silver, and an inner frame of bronze in the same outline, its surface incised with a key fret. On the panel are figures of noble ladies, carved in soapstone, the embroideries of their robes engraved and gilded, one lady pushing a flower-decked treasure wagon. A polonia tree extends its branches over her head and a phoenix soars aloft, all in soapstone of varied color. On the black lacquer back bats penciled in gold carry symbols, fruit and flowers among the clouds. The screen is surmounted by relief carvings of bats among clouds, in teakwood, and rests on a teakwood base carved in openwork with Fu-lions.

Height, 47½ inches; width, 21½ inches.

207—IMPERIAL PALACE TABLE SCREEN (*Ch'ien-lung*)

Companion to the preceding (No. 206), the soapstone decoration picturing ladies boating, and catching crabs. Same dimensions.

208—PALACE STANDING SCREEN (*Ch'ien-lung*)

Teakwood, with floral carvings in relief and incised border grounds, framing a rectangular panel painted as a green and shimmering water-course under a blue sky, with bridges, surrounding landscape and numerous figures carved in tinted ivories and applied in bold relief. The landscape is mountainous and contains various buildings, and among the figures are noblemen watching fagot carriers, and in the foreground some fishermen.

*Height, 62 inches; width, 43 inches; height of picture, 41 inches;
width, 35 inches.*

209—PALACE STANDING SCREEN (*Ch'ien-lung*)

Companion to the preceding (No. 208), in the same workmanship, the panel here picturing in the foreground a noble accompanied by an attendant bearing gifts, approaching over a bridge a palace at the left where friends wait to greet him, and in the middle distance a figure on a buffalo, followed by a man afoot carrying a section of a fence. Same dimensions.

210—A PICTURE IN KINGFISHERS' FEATHERS (*Ch'ien-lung*)

An oblong panel displaying on a black lacquer ground two branches of a pomegranate tree, extending into view from the right, with fruit and leaves in kingfishers' feathers, and a bird in the same feathers, his plumage tinted, perched on the lower, swaying limb, with eyes on the bursting fruit. Four characters with two seals at upper left; two seals at lower right. Teakwood frame.

Height, 34 $\frac{7}{8}$ inches; width, 19 $\frac{1}{4}$ inches.

Second and Last Afternoon

211—IMPERIAL PALACE TABLE SCREEN (*Ch'ien-lung*)

On a background of cinnabar lacquer incised in a lattice pattern, an artist at imperial command has composed a landscape commemorating the harvesting of the rice, in illustration of a poem written by the Emperor, which is imprinted in carved characters of white jade, appliqué. The landscape pictures various buildings and figures about a lake, with trees, rocks and mountains, done in ivory, green and white jade, lapis-lazuli, kingfishers' feathers and other materials, in bold relief. Teakwood frame; back of black lacquer with flowers and bats penciled in gold lacquer. Teakwood stand, carved with lotus flowers and dragons.

*Height, 52½ inches; length, 56 inches; height of picture, 33½ inches.
length, 45½ inches.*

212—IMPERIAL PALACE TABLE SCREEN (*Ch'ien-lung*)

Companion to the preceding (No. 211), in similar workmanship but the scene varied, the composition here illustrating a poem by the Emperor on silk worm culture. Same dimensions.

213—IMPERIAL PALACE SCREEN (*Ch'ien-lung*)

Teakwood, in ten folds, with brass-bound feet; carved in relief on the obverse with animals, landscapes with figures, fruit and flower sprays and household ornaments, and on the reverse with dragon scrolls, ideographs and other formal devices. Within each fold a recessed panel, under glass, the several panels ornamented with built-up groups of various trees and plants, the trunks, branches and stems in gilt-metal, leaves in enameled silver, and blossoms in jade, amber, tourmaline, coral, aquamarine and amethyst, on a ground of ivory painted as gravel and supporting rockery of wood painted in representation of cloisonné enamel. On each is a poem by the Emperor, celebrating the plants. On the reverse of these panels are brilliant paintings in color on silk, by artists of the *Ch'ien-lung* period, picturing figures in spacious palace domains. From the Imperial Palace at Peking.

Height, 6 feet; length, 12 feet.

TEAKWOOD FURNITURE

214—PAIR GARDEN SEATS (*Ch'ien-lung*)

Teakwood, carved, and set with panels of cloisonné enamel displaying floral ornamentation in polychrome on turquoise-blue ground.

Height, 19 inches.

215—TWO TEAKWOOD TABLES (*Ch'ien-lung*)

Square, in double section, with hollow-square base. Carved and pierced ornamentation in various forms, and each side inlaid with two dragons carved of mother-of-pearl; under the top, each side set with two mirror panels painted with bats and flowers.

Height, 32¼ inches; 13¾ inches square.

216—TWO TEAKWOOD TABLES (*Ch'ien-lung*)

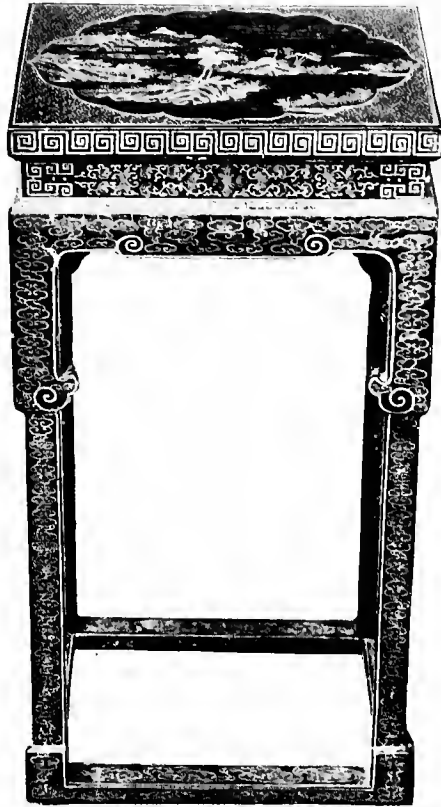
Square, with corner legs resting on a hollow-square base, and an intermediate platform or shelf. The decoration, incised, and carved in relief and openwork, includes the thunder-scroll and conventional lotus-petal borders, foliate and beaded scrolls, monster-heads and the *ju-i* motive.

Height, 34 inches; 15 inches square.

217—TEAKWOOD SQUARE TABLE, OR STAND

Tall and slender quadrangular legs with molded edges, resting on a square, solid base. Relief carvings in teak and in boxwood applied, in the form of conventional scrolls, Shou medallions and bats.

Height, 36½ inches; top 15⅞ inches square.



218—BLACK LACQUER TABLE

Oblong, with straight quadrilateral legs, reduced in dimensions below a characteristic projecting scroll about a third of the way down, and resting on a hollow oblong base. Decorated in gold lacquer; on the top a foliated medallion enclosing a seaside landscape with summer houses, within a ground of swastika lattice, on the edges, skirt and legs floral and cloud scrolls and angular fret.

Height, 34 $\frac{3}{4}$ inches; length, 17 $\frac{1}{4}$ inches; width, 12 $\frac{3}{4}$ inches.

219—BLACK LACQUER TABLE

Companion to the preceding (No. 218), and of the same dimensions.

Second and Last Afternoon

220—TEAKWOOD TABLE (*Ch'ien-lung*)

Oblong; legs straight at the top and curved below, resting on an oblong open base beneath which are four low feet. At the edge of the top a plain molding, and at the corners metal finials with inner outline in *ju-i* form. Relief decoration of archaic dragon scrolls, floral scrolls and Shou characters, and at the corners animal masks.

Height, 31 inches; length, 41 inches; width, 28½ inches.

221—TEAKWOOD TABLE (*Ch'ien-lung*)

Oblong, with a centre drawer in either side, and at either end a shelf below the top. Decoration, elaborately carved archaic dragon scrolls in relief, with pendants and tassels on lower legs; knee-brackets at the leg tops, and low balconies about the shelves, in openwork scrolls. Brass drawer handles.

Height, 35 inches; length, 61 inches; width, 27 inches.

222—TEAKWOOD TABLE (*Ch'ien-lung*)

Companion to the preceding.

223—PAIR BLACK LACQUER GARDEN SEATS

With solid tops and bottoms, and four low sceptre-head feet, the open sides formed of carved quatrefoils bisected by vertical ribs. Penciled in gold with lotus and *ju-i* designs, bats, trellises and vermicular scrolls; floral design on the bottom enriched with red.

Height, 20 inches.

A COLLECTION OF PALACE FURNITURE, BEING CH'IENTUNG ORIGINALS, REDECORATED AT A TIME OF PALACE RENOVATION ABOUT A HALF CENTURY AGO, FOR THE USE OF THE IMPERIAL FAMILY, THE DECORATIONS REPRODUCING THOSE OF THE CH'IENTUNG TIME



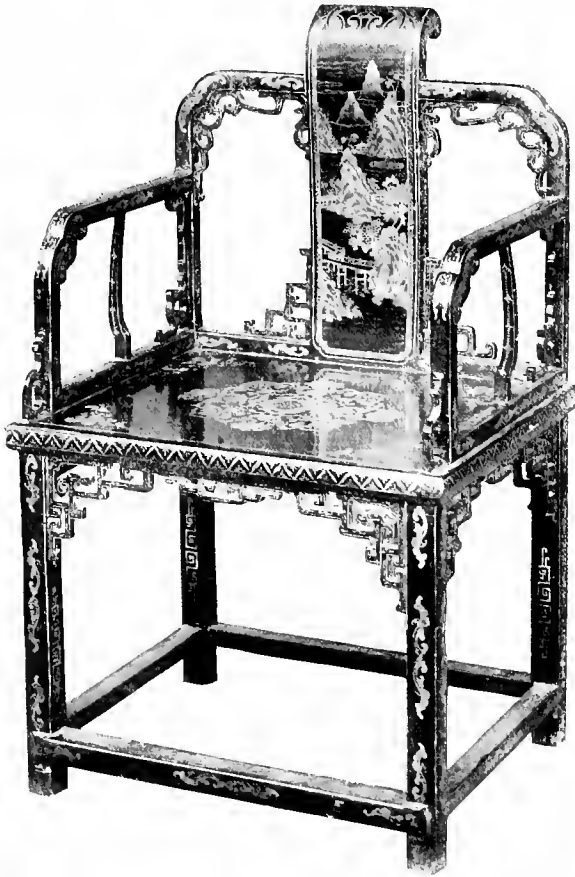
224—BLACK LACQUER TABLE WITH DRAWER

All four sides concaved, the swelling corners being then indented; four slender cabriole legs resting on a fixed base, which in turn is supported on four low feet. Skirt carved in openwork, with sceptre-heads overhanging the leg tops. Decorated throughout in gold lacquer, the table surface picturing summer landscapes at the waterside, and the delicate pencillings elsewhere presenting brocade designs, bats and formal borders.

Height, 34 inches; length, 19½ inches; width, 17 inches.

225—BLACK LACQUER TABLE WITH DRAWER

Companion to the preceding (No. 224), and of the same dimensions.



226—TWO BLACK LACQUER ARMCHAIRS

Quadrangular seat, legs and braces, and dragon-scroll brackets and aprons; skeleton back and arms, with solid splat. On the splat a lake among the mountains, with summer houses, and elsewhere conventional lotus and peony motives, with tendril streamers, and sundry scrolls, all delicately penciled in gold.

Second and Last Afternoon

227—TWO BLACK LACQUER ARMCHAIRS

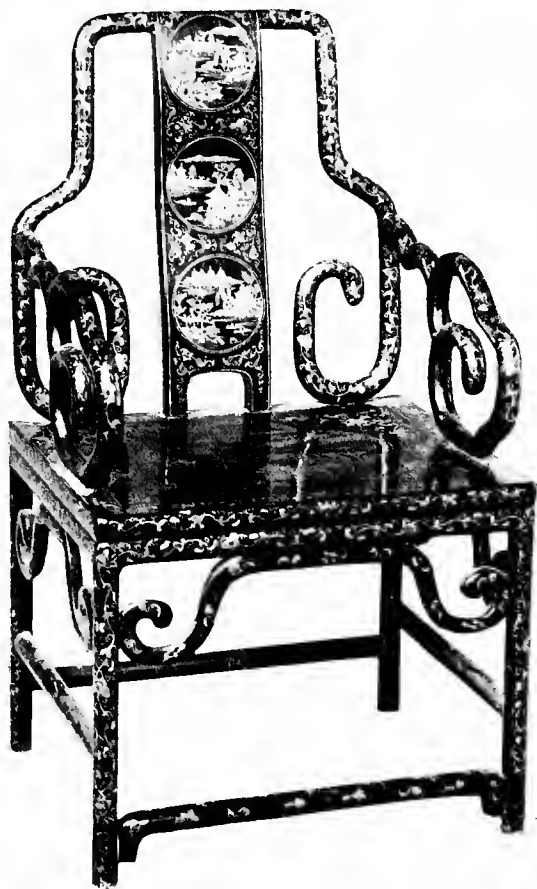
Of the same form as the preceding (No. 226), and decorated in gold with the same motives but more extensively, the entire seat being covered with floral designs, the sceptre-head and bats. In the landscape on the splat two storks with rods in their bills fly downward over buildings washed by waves.

228—TWO BLACK LACQUER ARMCHAIRS

Oblong seat, on four straight round legs with four round braces, and three upper braces scrolled, in place of a skirt. Arms and back all carved round, in scrolls; broad, solid splat, pierced with a low arch at the seat. Decorated in gold, the splat and seat with landscapes showing wide water reaches, the splat decoration lying within a ground of floral lattice, and arms, legs and braces with a lotus scroll.

229—TWO BLACK LACQUER ARMCHAIRS

Companions to the preceding (No. 228), the landscape decoration only differing, and the ground of the splat, which in these chairs is a more open lattice, in floral motive.



230—TWO BLACK LACQUER ARMCHAIRS

Of the same form as the preceding lots, Nos. 228 and 229, and decorated in gold and pink lacquer with a highly conventionalized lotus scroll and detached sprays; in addition, on the seat a quatrefoil encloses a summer landscape in which a boatman appears, and on the splat are three medallions painted with landscapes.



231—PAIR BLACK LACQUER SIDE CHAIRS

Quadrangular seats, legs and braces, with carved scroll skirt and back. Painted in gold on all surfaces with lotus sprays and scrolls, Shou medallions, and bats carrying symbols.

232—TWO BROWN LACQUER ARMCHAIRS

Quadrangular seat, legs and braces; solid arms and back, with panels and heavy moldings. Painted in gold on all surfaces, in many variations of the lotus motive, with an intermingling of other floral designs, and bats, the *ju-i* and other emblems.

233—TWO BLACK LACQUER CHAIRS

Of the same form as the preceding (No. 232), to which they are companions, the decoration, in gold, being in the same motives slightly varied.

234—BLACK LACQUER TABLE

Long and narrow, with convex rail skirted with scrolls, and square straight legs. Gold decoration in lotus scrolls on legs and rail, and on the top in a landscape of summer houses among mountains and long stretches of water.

Height, 33 inches; length, 49 inches; width, 16 inches.

235—BLACK LACQUER TABLE

Long and narrow, with straight square legs, braced only at the narrow ends, the rails skirted with scrolls. On the top a rocky landscape with water, summer houses and bridges, in a pinkish-brown lacquer gilded, and on the sides and legs flower sprays and scrolls.

Height, 33 inches; length, 49 inches; width, 15 inches.

236—BROWN LACQUER TABLE

Long and narrow, with quadrangular rails carved in angular scroll; straight square legs meeting the rails, and supporting elaborate short columns on which the top rests. Decorated in gold, the top with mountains, pines, willows and the sea, and birds in flight, the legs and rails with bats, scrolls and sprays.

Height, 33½ inches; length, 52 inches; width, 16½ inches.

(Illustrated)

237—BROWN LACQUER TABLE

Oblong with straight square legs, and scrolled brackets. Top penciled in gold with a landscape of rolling waters, mountains and summer palaces, within a polyfoliate panel set in a trellised ground, the sides and legs with the lotus, bats and scrolls.

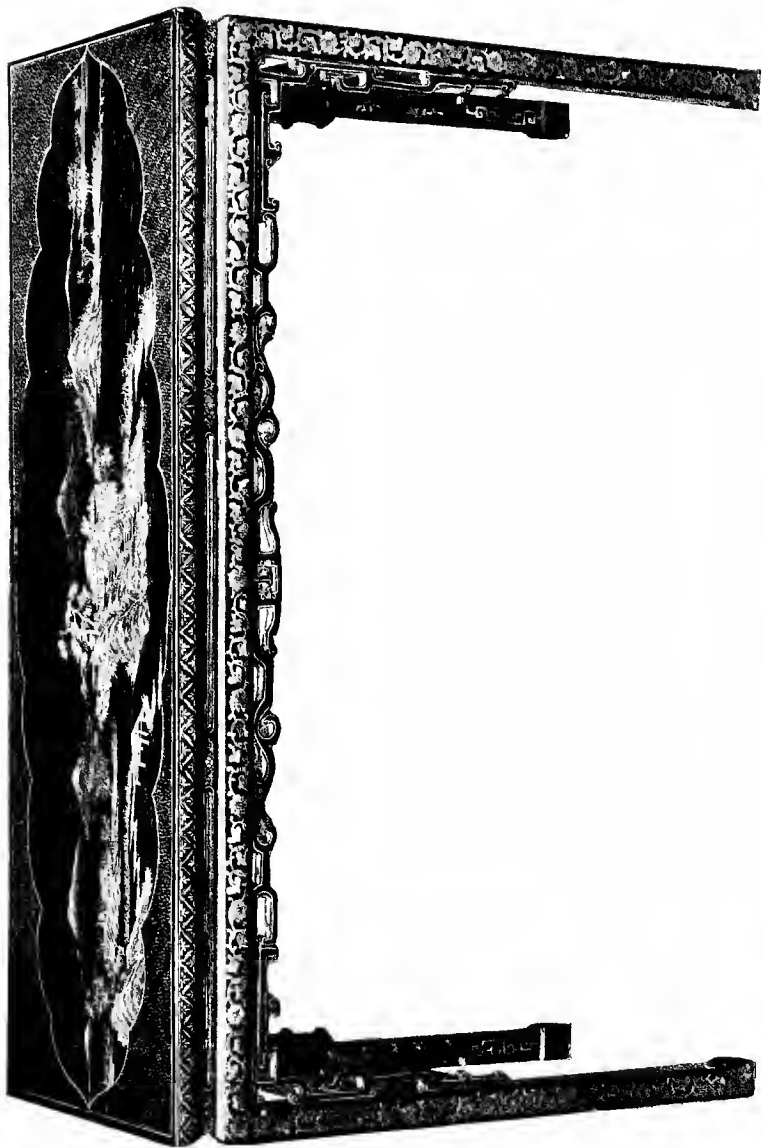
Height, 33 inches; length, 40 inches; width, 20 inches.

238—EMPEROR'S THRONE IN BLACK LACQUER AND GOLD

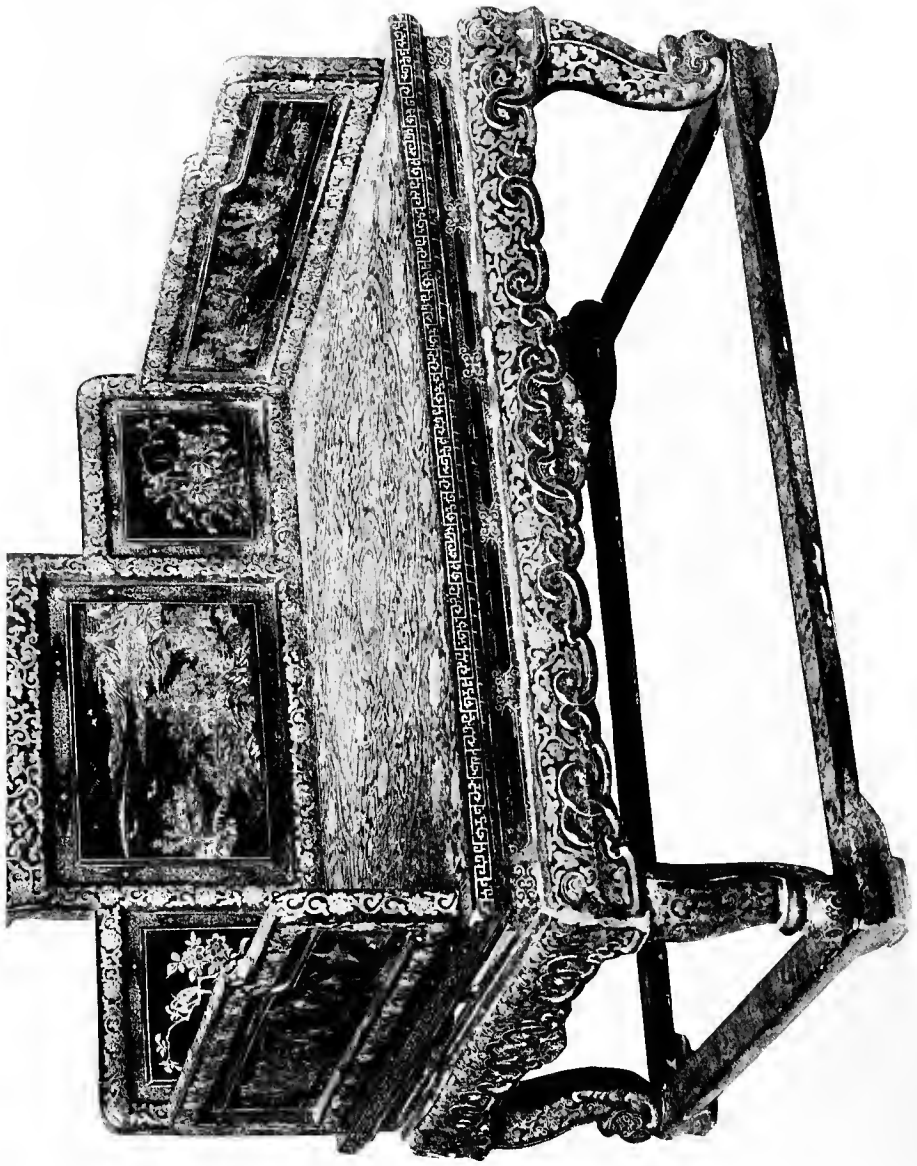
A large quadrilateral seat, with solid back and arms, apron with scrolled edge and *ju-i* centre, and four short cabriole legs which rest on an oblong outline base supported on four low feet. The profuse decorations are in elaborate lotus blossom scrolls and other floral motives, birds and insects on the wing appearing in some places in connection with the flowers, and again birds perched on branches; on the seat a large foliated medallion encloses an involved ornamentation in which the emblematic bats are seen, and on arms and back are landscapes and sailing boats.

Length, 49½ inches; width, (depth), 37 inches.

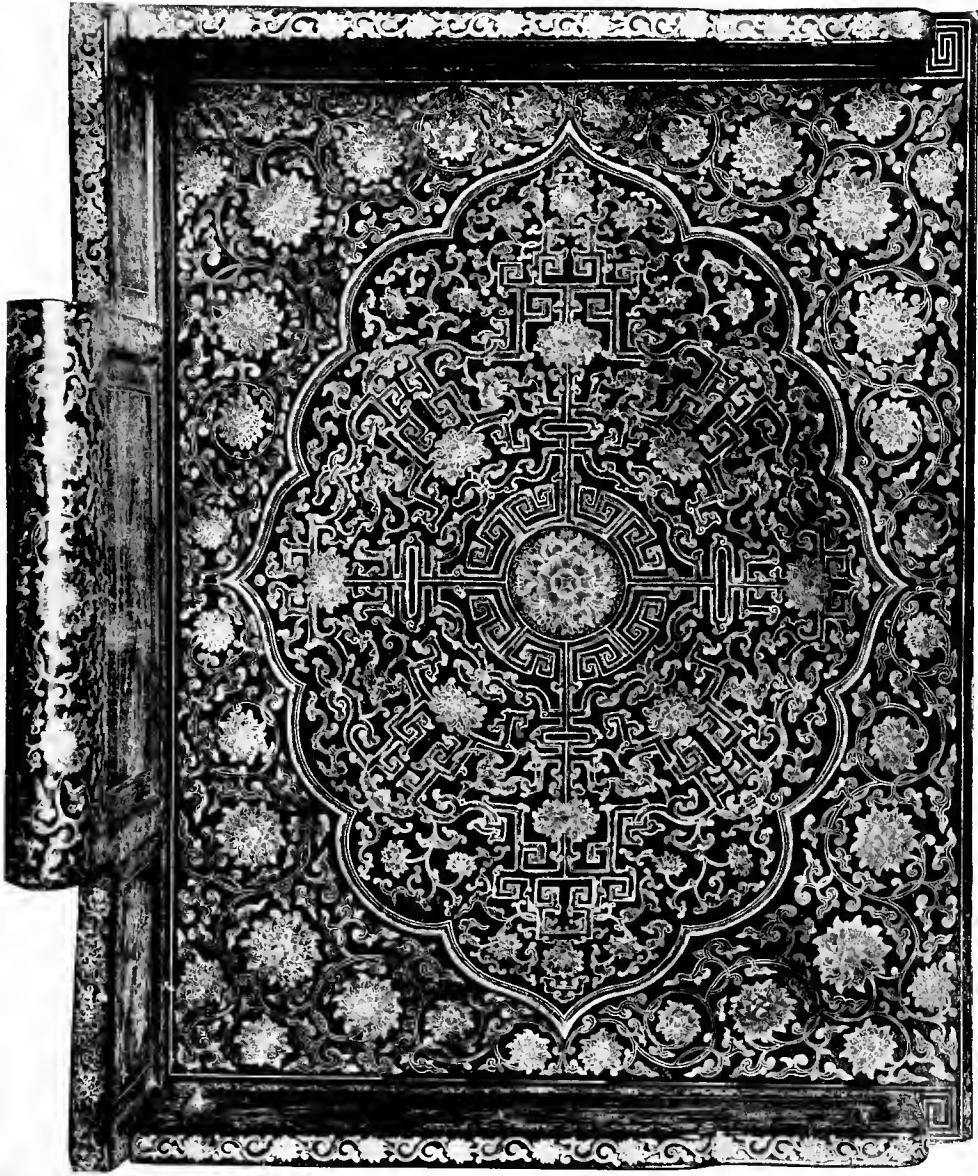
(Illustrated)



No. 236—BROWN LACQUER TABLE



No. 258—EMPEROR'S THRONE



No. 238—SEAT OF THRONE

**CHINESE EMBROIDERED TABLE COVERS AND
IMPERIAL TEXTILES**

239—PAIR SILK BROCADE ARM RESTS

Globular cushions in seven sections with two circular poles; golden-yellow silk of greenish trend, with symbols and conventional patterns appearing in the cloth-of-gold ground.

Diameter, 7¾ inches.

240—PAIR SILK BROCADE ARM RESTS

Companions to the preceding, the silk being of a light emerald hue, with soft and brilliant sheen.

241—PAIR CHINESE SILK VELVET HANGINGS (*K'ang-hsi*)

The velvet a rich sapphire-blue of soft sheen, displaying in a cloth-of-gold ground of softened, brownish tone, a decoration of dragons emerging from waves, both in the main body of the hanging and in short lambrequin. Floral scroll border in the velvet, on the gold ground.

Height, 30 inches; length, 38 inches.

242—CHINESE SILK VELVET TABLE COVER (*K'ang-hsi*)

Quadrilateral. Rich deep ruby toned velvet with a peony decoration of restrained abundance in dark emerald, within a central square enclosing a medallion, and in a broad border.

Length, 34 inches; width, 32½ inches.

Second and Last Afternoon

243—CHINESE SILK VELVET TABLE COVER (*K'ang-hsi*)

Oblong. Golden-pink velvet of soft and brilliant sheen, with a decoration of the "Hundred Antiques" and a floral border appearing in its cloth-of-gold ground.

Length, 37 inches; width, 23½ inches.

244—CHINESE SILK VELVET TABLE COVER (*K'ang-hsi*)

Rectangular. Centre of soft peach-pink with lustrous sheen, with a luxuriant lotus ornamentation in a delicate emerald-green. Border of lotus motive in the pink, on a rich, deep sapphire-blue ground.

Length, 37¾ inches; width, 33¾ inches.

245 CHINESE IMPERIAL BROCADE TABLE COVER (*Ch'ien-lung*)

Square. All around, a wave and rock border, in polychrome, enclosing a golden-yellow field in a low key, adorned with imperial dragons and flaming jewels among clouds, worked in gold, pink, blue, green and white.

Length, 3 feet 2½ inches; width, 3 feet 2 inches.

246—CHINESE SILK VELVET TABLE COVER (*K'ang-hsi*)

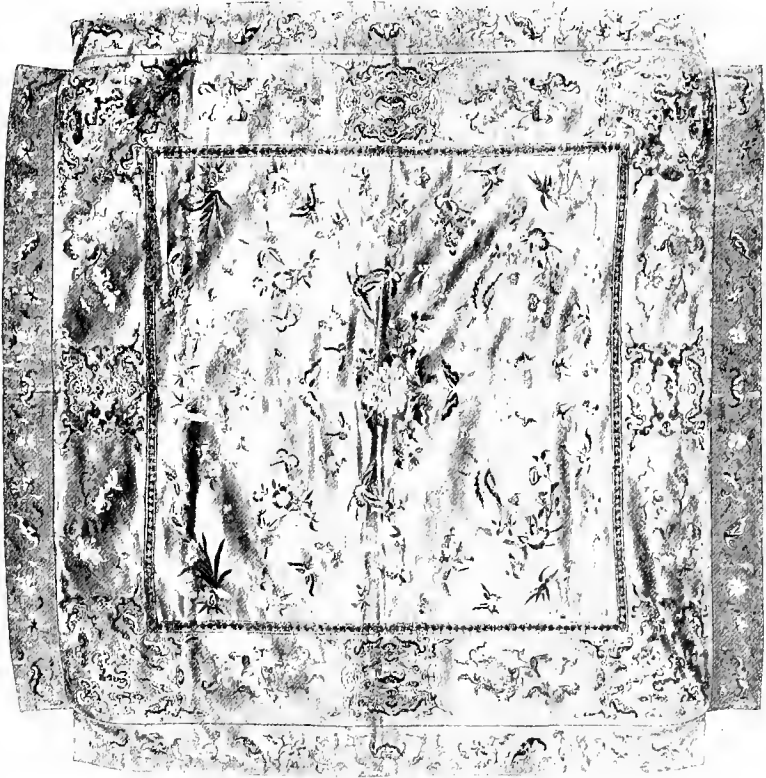
Golden-pink cut velvet with cloth-of-gold ground, the square field adorned with a peony medallion and corners, the body of the design appearing in gold, and the broad border presenting a luxuriant lotus scroll in the velvet, on the gold ground.

Length, 3 feet 3 inches; width, 2 feet 10 inches.

247—CHINESE SILK EMBROIDERY HANGING (*Ch'ien-lung*)

The peach tree of the genii in bearing, bats, *ju-i* sceptres and cloud scrolls, in blue, pink, white, green and gold on a golden-buff ground of soft bronze-like sheen. Borders of floral scroll in colored silks and angular scroll in gold braid. Sectional lambrequin in peony and lotus motives.

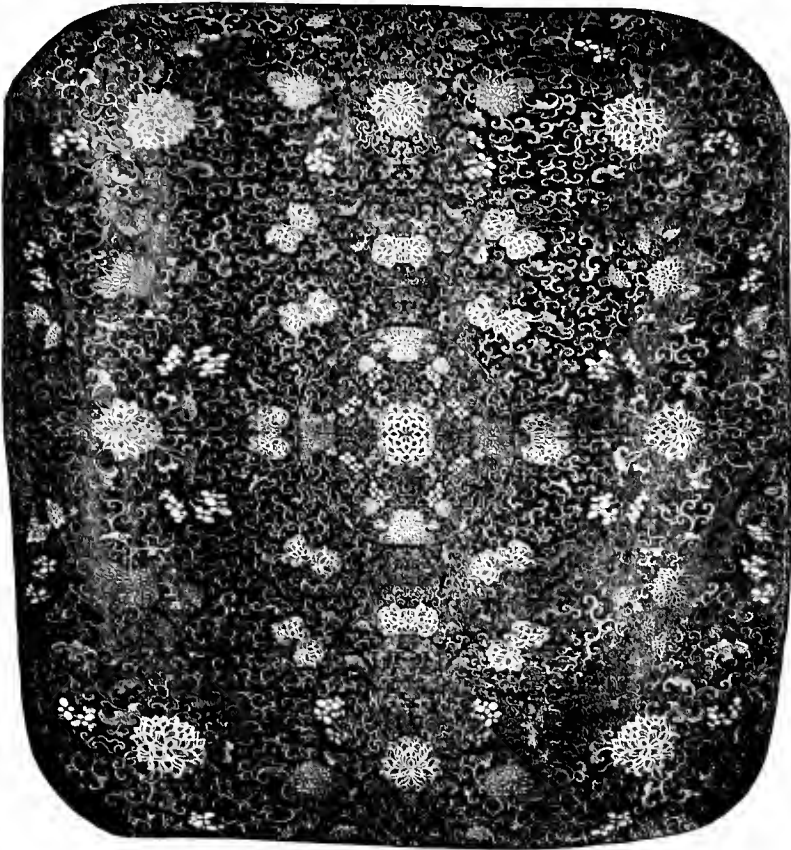
Height, 34 inches; length, 5 feet 1 inch.



248—CHINESE SILK EMBROIDERY TABLE COVER (*Ch'ien-lung*)

Quadrilateral, with small half-squares out of the corners, for fitting down over the table top. Rich golden-buff ground, embroidered in soft and brilliant colors with butterflies and sprays of varied flowers, within a square set off by a gold border; outside this, bats, clouds scrolls and sprays.

Dimensions, 3 feet 6 inches square.



249—CHINESE SILK EMBROIDERY TABLE COVER (*Ch'ien-lung*)

Quadrilateral with rounded corners. On a rich yellow ground a swastika lattice worked in brilliant azure, and overlaid with bats, fruit and flower sprays and cloud scrolls, in varied colors, in a wide border, while in a field defined by gold braid at the centre the lattice, bats and cloud scrolls continue, the fruit and flowers giving way to nine imperial dragons executed in gold.

Length, 4 feet 3 inches; width, 3 feet 2 inches.

250—CHINESE SILK TAPESTRY TABLE COVER (*Ch'ien-lung*)

Square. Delicate buff ground with a soft, light sheen, woven in blue and silvery white, soft, faint greens and orange-browns and a light gray-brown, with an extensive and elaborate ornamentation. In the centre a large foliated medallion encloses a peach tree of the genii in fruit, with rocks and waves, and storks among clouds, this surrounded by a profusion of lotus foliations and conventional blossoms, encompassed by a narrow band of gold braid. Outside the gold boundary, a border of lotus and angular scroll.

Dimensions, 3 feet 3½ inches square.

(Illustrated)

251—CHINESE IMPERIAL BROCADE TABLE COVER (*Ch'ien-lung*)

Oblong, with an all-over pattern of closely overlying small cloud-scrolls in soft tones of green, pink, brown, blue and silvery-white, within a rolling-wave border in similar colors, interrupted by five five-clawed dragons in gold, the central one in possession of the omnipotent jewel.

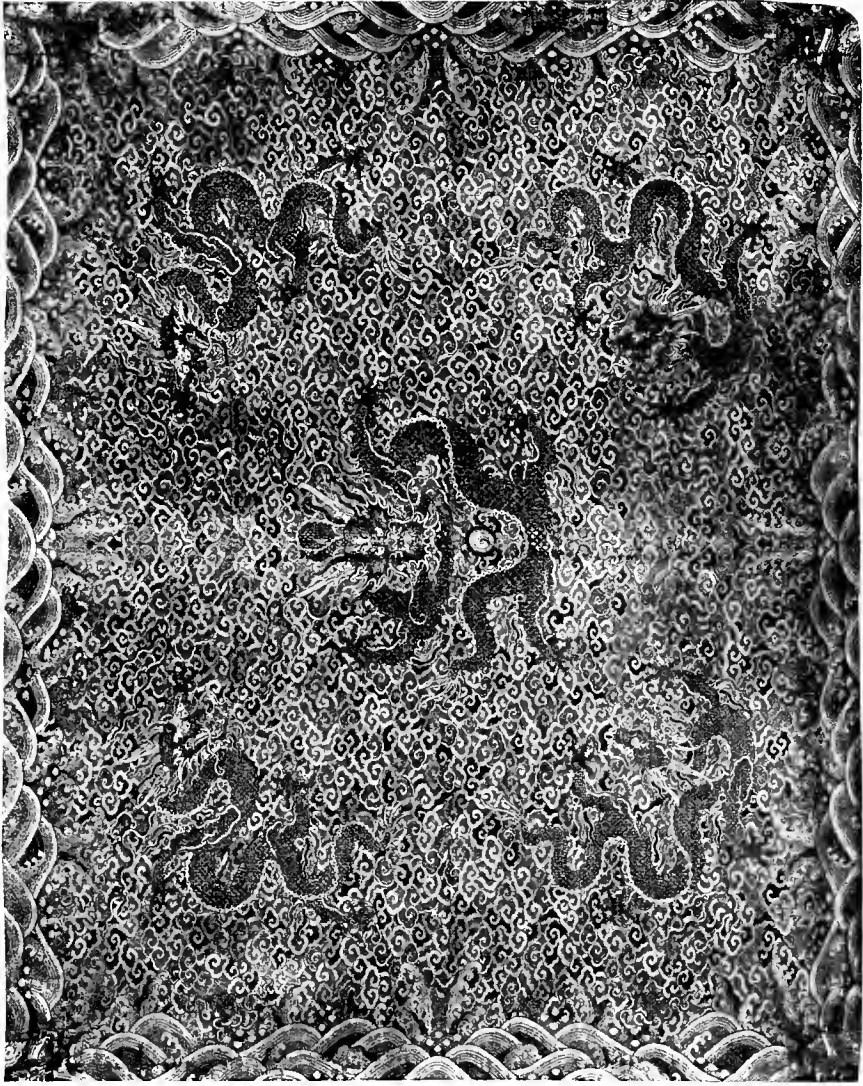
Length, 3 feet 9½ inches; width, 2 feet 11½ inches

252—CHINESE IMPERIAL BROCADE TABLE COVER (*Ch'ien-lung*)

Companion to the preceding (No. 251).

Length, 3 feet 9½ inches; width, 3 feet 1 inch.

(Illustrated)



No. 252—CHINESE IMPERIAL BROCADE TABLE COVER (*Chien-lung*)



No. 250—CHINESE SILK TAPESTRY TABLE COVER

Second and Last Afternoon

- 253—CHINESE IMPERIAL BROCADE TABLE COVER (*Ch'ien-lung*)
Oval, exhibiting a time-softened wine-color lattice over a quiet green ground, interrupted by a profuse floral decoration in both colors with blue, lilac, dull yellows and soft pinks added.

Greater diameter, 4 feet 8¼ inches; lesser, 3 feet 8¼ inches.

- 254—SET OF FOUR CHINESE SILK TAPESTRY HANGINGS (*Ch'ien-lung*)

Worked with landscapes and figures in soft blues, greens and browns, on a brownish-red golden ground, with panels of bats among clouds above, and higher still long inscriptions penciled in gold on the deepest of blue.

Each: Length, 3 feet 2 inches; width, 9½ inches.

- 255—SET OF FOUR CHINESE SILK TAPESTRY HANGINGS (*Ch'ien-lung*)

At the base, oblong panels of deep sapphire-blue ground adorned with branches of blossoms, birds and butterflies in delicate colors; above, lesser panels picturing symbols and household ornaments in similarly delicate tones on a *bleu-de-ciel* ground.

Each: Length, 29¼ inches; width, 9¼ inches.

(*Illustrated*)



No. 235—SET OF FOUR CHINESE SILK TAPESTRY HANGINGS

Second and Last Afternoon

256—PAIR CHINESE SILK EMBROIDERY HANGINGS (*Ch'ien-lung*)

Inscriptions in seven bold characters, embroidered in brilliant blue on a ground of golden silk of brownish tone, with scattered flower sprays and butterflies lightly embroidered in neutral tones along the sides.

Length, 4 feet 3½ inches; width, 12½ inches.

(Illustrated)

257—CHINESE IMPERIAL BROCADE TABLE COVER (*Ch'ien-lung*)

Nearly circular, patterned in a bold lattice design involving medallions surrounded by bats, foliated panels on diapered ground, squares formed of the archaic dragon-scroll, sprays and other ornamental motives, in light and dark blue, white and a warm reddish copper color on a soft olive ground.

Diameters, 4 feet 9¾ inches and 4 feet 2½ inches.

258—CHINESE IMPERIAL SILK DAMASK (*Ch'ien-lung*)

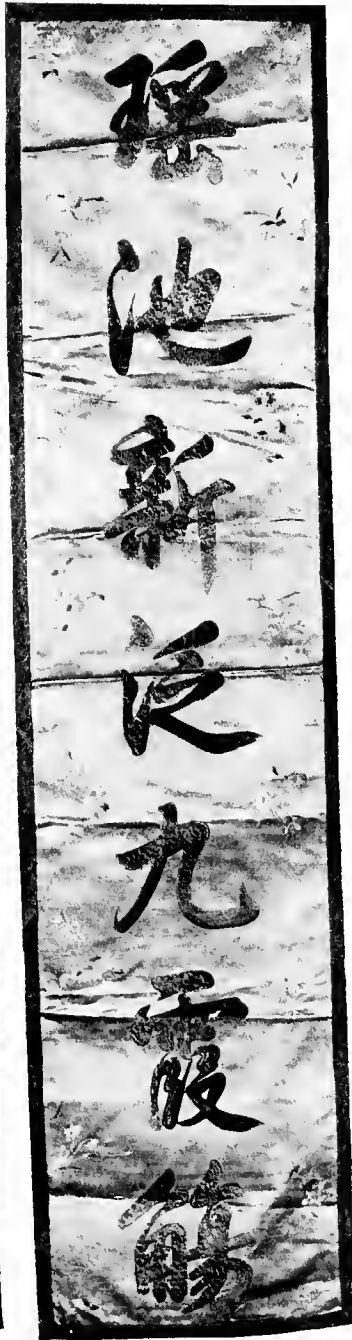
A long roll or strip of glowingly brilliant rich golden yellow, patterned with thirty-six imperial dragons, each grasping for a flaming jewel, among cloud scrolls; edges selvaged; one end with an enclosed ravel fringe, and both ends bearing the maker's name done in the weave.

Length, 16 yards; width, 29½ inches.

259—PAIR CHINESE SILK VELVET HANGINGS (*K'ang-hsi*)

Velvet of richest deep azure with a softly glowing sheen, disclosing an ornamentation in the cloth-of-gold ground which includes two four-clawed dragons, a lotus medallion, and two dogs Fu playing with the filleted ball, above rolling and leaping waves. Archaic dragon border in velvet on the metallic ground.

Length, 5 feet 8 inches; width, 20½ inches.



No. 256—PAIR CHINESE SILK EMBROIDERY HANGINGS

Second and Last Afternoon

260—CHINESE SILK EMBROIDERY TABLE COVER (*Ch'ien-lung*)

Oblong. Silk of rich and deep canary-yellow, embroidered with peaches, bats and flowers in ruby-red, azure, pink, light blue and soft green, with yellow and white; at the centre a peach medallion within an oblong doubly outlined in gold.

Length, 4 feet 3¼ inches; width, 3 feet 1¾ inches.

(*Illustrated*)

261—PAIR CHINESE SILK VELVET HANGINGS (*K'ang-hsi*)

An oblong field of delicate red with brilliant sheen is decorated in pale emerald also having a soft sheen, the decoration a conventionalized lotus scroll with large blossoms, the central blossom being enclosed within a foliated medallion. Border of deep and glowing blue, with a conventional lotus scroll in the red.

Length, 5 feet 3 inches; width, 20½ inches.

262—CHINESE SILK VELVET TABLE COVER (*K'ang-hsi*)

Circular. In the centre a square showing an Imperial dragon and emblems in a matted foundation fabric from which the gold has all but vanished, within a rich cherry-red velvet ground. Around the square eight more of the dragons similarly executed. Border of dark blue brocade with dragon medallions and symbols.

Diameter, 4 feet 1 inch.

(*Illustrated*)

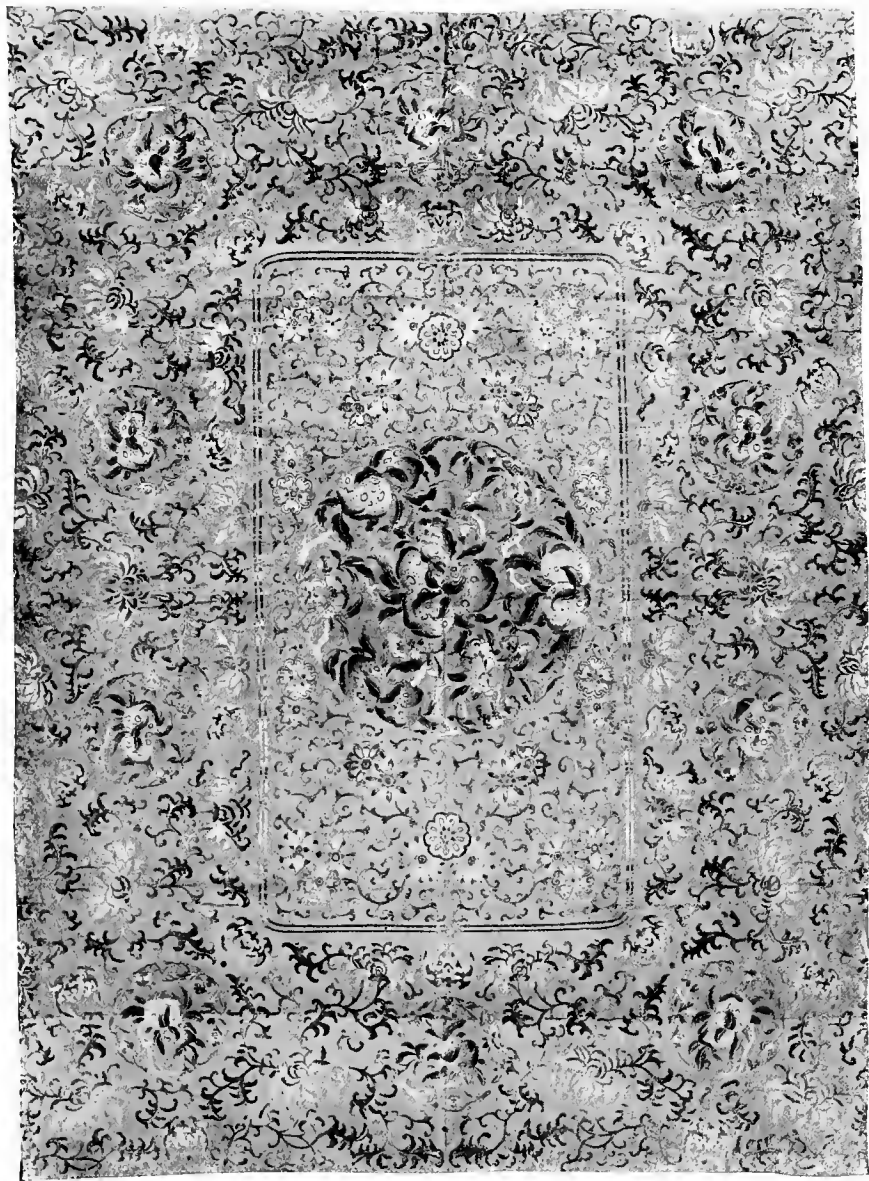
263—CHINESE SILK TAPESTRY HANGINGS (*Ch'ien-lung*)

Scenes in the Taoist paradise, with Shou-lao and other immortals, cranes the messengers of the gods, pines, the peach tree of the genii, pavilions and cloud scrolls, in soft blues, greens, browns and whites on brownish-golden ground, within a general ground of neutral red and yellow-brown notes.

Length, 4 feet; width, 2 feet 8 inches.



No. 262—CHINESE SILK VELVET TABLE COVER (*K'ang-hsi*)



No. 260—CHINESE SILK EMBROIDERY TABLE COVER

Second and Last Afternoon

264—CHINESE SILK EMBROIDERY TABLE COVER (*Ch'ien-lung*)

Oblong with round corners; yellow silk ground. A field following the contour of the mat is set off by a braid of gold and embroidered in glistening silks of soft and bright hues with formal corners of archaic dragon-scroll and an ornate medallion of lotus flowers and foliations, embracing an inner medallion of interlacing sceptre-heads in gold. Border of lotus and dragons in corresponding colors.

Length, 4 feet 9½ inches; width, 3 feet ½ inch.

(*Illustrated*)

265—CHINESE IMPERIAL BROCADE TABLE COVER (*Ch'ien-lung*)

Quadrilateral with broadly rounded corners. Lotus decoration in flower and foliar scroll, in soft brownish-red, pale green and deep blue, on a rich azure ground with soft sheen.

Length, 4 feet; width, 3 feet 8 inches.

266—CHINESE SILK EMBROIDERY TABLE COVER (*Ch'ien-lung*)

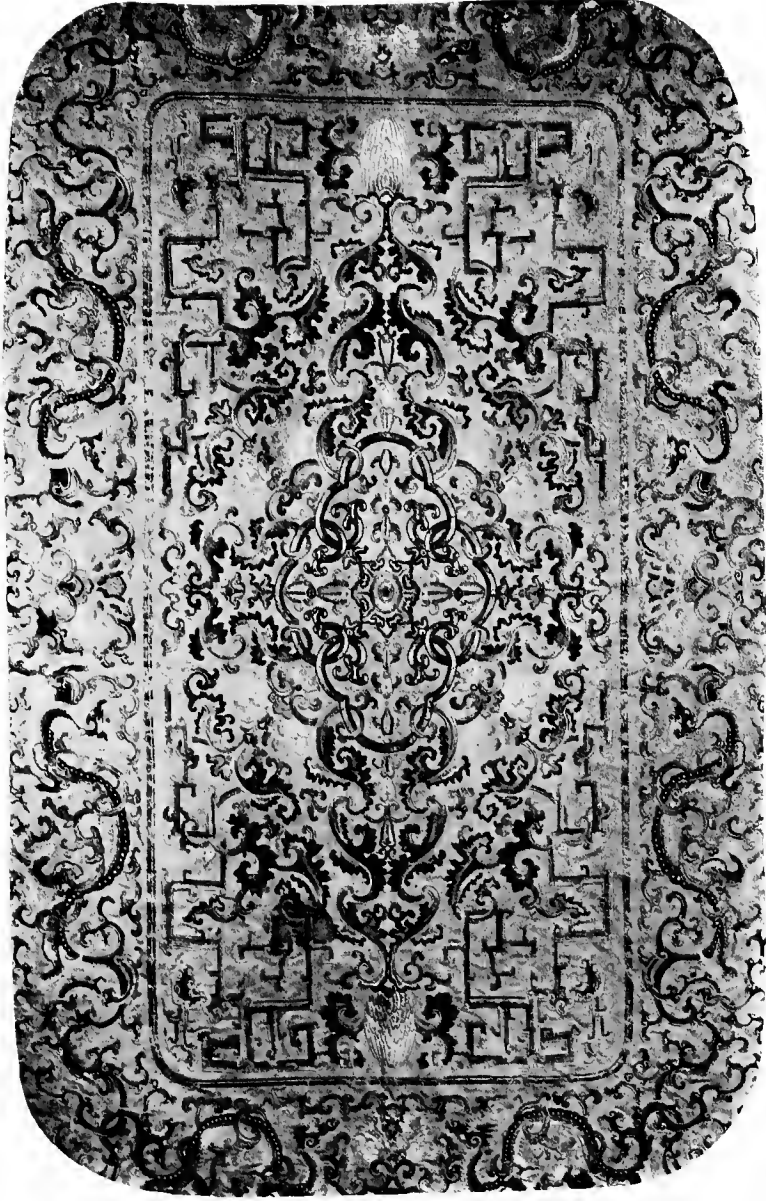
Rectilinear. Rich canary-yellow ground, embroidered in brilliant colors with a conventional lotus scroll, peach clusters and flying bats, in a broad border set off from a central panel by a band of gold braid. In the central panel nine imperial dragons in gold, amid cloud scrolls and swastika symbols in silk.

Length, 4 feet; width, 3 feet 9 inches.

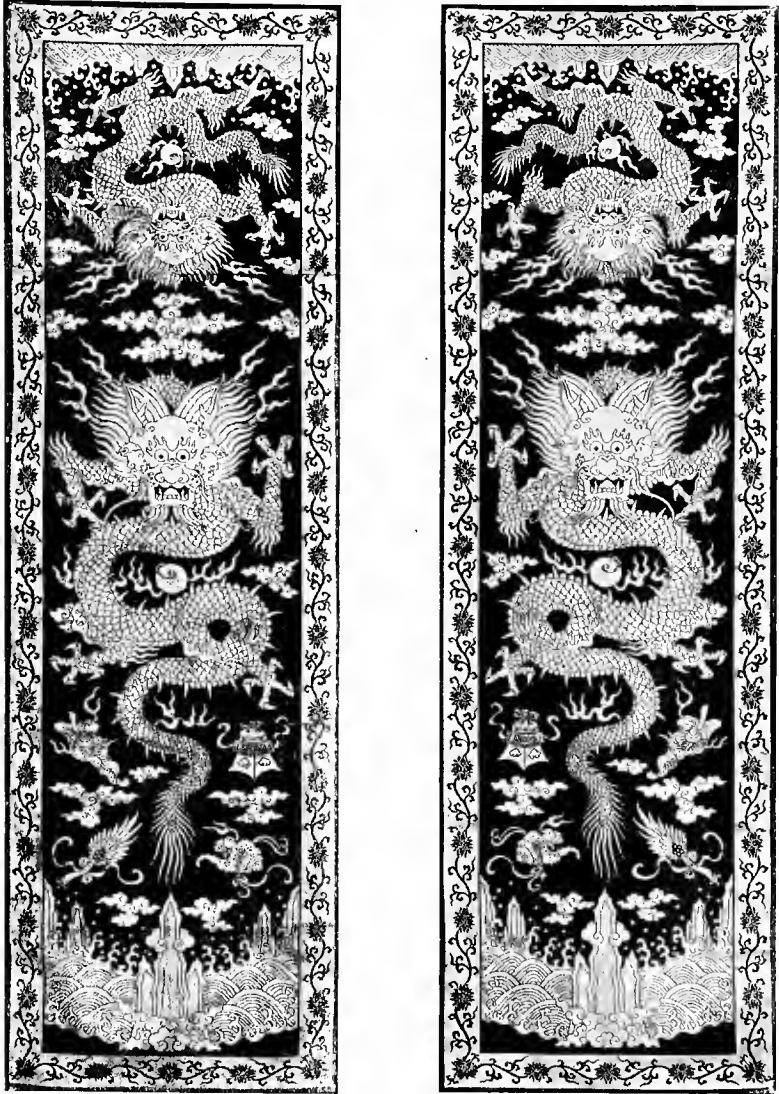
267—CHINESE SILK EMBROIDERY TABLE COVER (*Ch'ien-lung*)

Square with rounded corners. Rich canary-yellow silk with a profuse ornamentation of conventionalized lotus flowers, Buddhistic emblems of happy augury and numerous bats, embroidered in brilliant silks of many colors, the ornamentation divided by a band of gold braid into a central square and broad border.

Length, 4 feet 4 inches; width, 3 feet 4 inches.



No. 264—CHINESE SILK EMBROIDERY TABLE COVER



268—PAIR CHINESE SILK VELVET HANGINGS (*K'ang-hsi*)

Warm cherry-brown velvet with a delicate pale-ruby sheen; cloth-of-gold ground. Lotus border in velvet on the gold. Within the oblong field, two four-clawed dragons with flaming pearls and cloud-scrolls, and sea waves, shown in the gold ground.

Length, 6 feet; width, 22 $\frac{3}{4}$ inches.

Second and Last Afternoon

269—CHINESE IMPERIAL BROCADE HANGING (*K'ang-hsi*)

On a golden-bronze ground of olive note, imperial golden dragons accented in white, green and brown, the whirling jewel and waves, cloud and flame scrolls in the same colors with red, purple and blue added.

Length, 6 feet 3 inches; width, 4 feet 2½ inches.

270—CHINESE IMPERIAL BROCADE HANGING (*Ch'ien-lung*)

On a soft green ground a decoration of "The two hundred boys of long life," in low toned colors, the faces in white. The boys appear in favored gardens, terraced and balconied, amongst pine and peach trees, bats, storks and spotted stags, all emblematic of longevity. Six borders at top and seven at bottom.

Length, 6 feet 6 inches; width, 4 feet 4 inches.

271—CHINESE IMPERIAL BROCADE HANGING (*K'ang-hsi*)

Rich golden-brown silk of soft sheen, with seven dragon medallions in red, green, white, blue and gold, the color scheme simplified in the centre medallion.

Length, 6 feet 10½ inches; width, 4 feet.

272—CHINESE SILK VELVET HANGING (*K'ang-hsi*)

An oblong strip of rich golden-pink velvet with delicate sheen, disclosing in a cloth-of-gold ground a conventional floral decoration of rich luxuriance, partly embraced within three medallions worked in the velvet. Border design of foliar scroll in the velvet, on cloth-of-gold ground.

Length, 7 feet 4 inches; width, 23¾ inches.

273—CHINESE SILK VELVET HANGING (*K'ang-hsi*)

Rich orange and brilliant golden yellow with soft sheen, the design of bats and imperial dragons among clouds appearing in the ribbed silk ground.

Length, 6 feet 11 inches; width, 2 feet.

Second and Last Afternoon

274—MANDARIN'S COAT IN SILK EMBROIDERY (*Ch'ien-lung*)

Lightly embroidered with an octagonal lattice on a plum-colored ground above a deep border of turbulent waves of affluent color, and displaying five-clawed dragons heavily embroidered in gold, besides numerous floral embroideries in varied colors.

(Illustrated)

275—CHINESE SILK TAPESTRY HANGING (*Ch'ien-lung*)

Scenes in the Taoist paradise,—the immortals seated or standing under trees, boys making peach offerings to the god of longevity, figures borne upon dead trees over the waves, the apotheosis of an empress,—in soft neutral colors light in key, on a ground of warm apricot-brown.

Length, 5 feet 8 inches; width, 3 feet 2 inches.

276—CHINESE IMPERIAL BROCADE TABLE COVER (*Ch'ien-lung*)

Quadrilateral, with broadly rounded corners. Composite geometrical and floral latticed ornamentation throughout, the pattern in the centre being brightened by a plenitude of golden-yellow, amid various reds, blues and greens, whereas in the broad border the same colors appear more quietly on a rich olive ground.

Length, 5 feet; width, 4 feet.

277—CHINESE SILK EMBROIDERY TABLE COVER (*Ch'ien-lung*)

Oblong. A soft brownish-buff silk ground with a low toned dull-golden sheen is embroidered in light and dark blue, black, white, and yellowish greens, with twelve dragons among foliar scrolls and cloud forms. Narrow border of bats, blossoms and symbols in azure and silver-white on a black ground.

Length, 6 feet 1 inch; width, 3 feet 2½ inches.



No. 274—MANDARIN'S COAT IN SILK EMBROIDERY

Second and Last Afternoon

278—CHINESE SILK VELVET HANGING (*K'ang-hsi*)

Composed of four squares woven as one long strip. Golden-pink velvet on *drap d'or* ground, in each square an expansive bloom of the tree peony, with a bat hovering over, and a border of conventional chrysanthemum scroll.

Length, 7 feet 9 inches; width, 23½ inches.

279—CHINESE IMPERIAL BROCADE HANGING (*K'ang-hsi*)

On a greenish bronze ground of golden note a single huge five-clawed dragon worked in gold, his coils enfolding the sacred jewel, with his fiery breath in red and cloud scrolls and waves in blue, white, yellow, green, purple and topaz. Across the top a band of ten dragons in gold amid polychrome clouds, on a ground of rich purple-blue.

Length, 7 feet; width, 8 feet.

(*Illustrated*)

280—CHINESE SILK VELVET HANGING (*K'ang-hsi*)

A large oblong centre or central field displays one hundred bold Shou characters in ten columns, in velvet of pale old-gold hue on a cloth-of-gold ground of warm tone. This is surrounded by a broad border of emerald-green, showing bats among clouds, and at the top additional ideographs, the patterns left in uncut velvet on a cut velvet ground; brilliant emerald sheen.

Length, 9 feet 5 inches; width, 5 feet 5 inches.

281—CHINESE IMPERIAL BROCADE HANGING (*K'ang-hsi*)

Picturing huge five-clawed dragons in gold, and cloud and flame scrolls in brilliant colors, on an olive-brown ground.

Length, 10 feet 6 inches; width, 8 feet 4 inches.



No. 279—CHINESE IMPERIAL BROCADE HANGING (*K'ang-hsi*)

Second and Last Afternoon

282—CHINESE IMPERIAL BROCADE HANGING (*K'ang-hsi*)

TWO huge imperial dragons mount among cloud scrolls above sea waves, the whole executed in scarlet and white and brilliant azure, gold, and soft tones of green, blue and brown, on a golden-olive ground.

Length, 10 feet 9½ inches; width, 8 feet 4½ inches.

283—CHINESE VELVET HANGING (*K'ang-hsi*)

A gorgeous production in silk velvet of a soft and glowing light golden yellow, carrying a luxurious ornamentation interwoven in gold thread, representative of the Taoist paradise. In the centre a pavilion appears among clouds, above waves of the sea, with a stork soaring over it and still higher a haloed figure borne upon another stork and attended by two fan bearers. At the sides are figures of immortals with symbols, and at the bottom lotus foliations. Bordered with blue silk brocade, with floral patterns in soft colors.

Length, 12 feet; width, 6 feet.

284—CHINESE SILK EMBROIDERY HANGING (*Ch'ien-lung*)

Ground of soft old-rose silk, heavily embroidered in silk and gold with a huge Fu-lion and lotus plants, wave forms and symbols, a canopy and pendants, and ideographic inscriptions, the lion being almost wholly in gold and the various colors including lush greens, rich blues, glowing reds, yellow and white.

Length, 15 feet 6 inches; width, 11 feet.

285—CHINESE IMPERIAL BROCADE DOOR CURTAIN (*K'ang-hsi*)

ACROSS the top a solid band or strip in which imperial dragons appear among clouds above waves, in gold, red, green, brown and white on a dark purple-blue ground. Below, the curtain parts at the centre, and the decorative motive is continued in the same coloring on a golden-bronze satiny ground of greenish trend, only that in place of numerous small dragons each half of the curtain displays one large dragon, worked in gold.

Length, 7 feet 10 inches; width, 9 feet.

(*Illustrated*)



No. 285—CHINESE IMPERIAL BROCADE DOOR CURTAIN (K'ang-hsi)

Second and Last Afternoon

A Collection of Chinese Imperial Brocades Used as the Decorations of the Buddha Room in the Imperial Palace at Peking.

286—CHINESE IMPERIAL BROCADE HANGING (*K'ang-hsi*)

In long banner form, the ground a rich cerulean throughout. In the upper portion a large square outlined in white encloses two imperial dragons about a Shou character, amid wave and cloud scrolls, worked in a pale greenish old-gold, flame pink and white, the square surrounded by a border of eight dragons. Below this two more dragons guard the jewel of omnipotence, their bodies extending down the long flowing ends of the banner, all in the same color scheme. The inner sides of the ends are cut in *ju-i* sceptre-head form, and between them is another sceptre-head, pendent.

Length, 11 feet 6 inches; width, 4 feet 2 inches.

(Illustrated)

287—CHINESE IMPERIAL BROCADE HANGING (*K'ang-hsi*)

Companion to the preceding.

Length, 11 feet 9 inches; width, 4 feet.

288—CHINESE IMPERIAL BROCADE HANGING (*K'ang-hsi*)

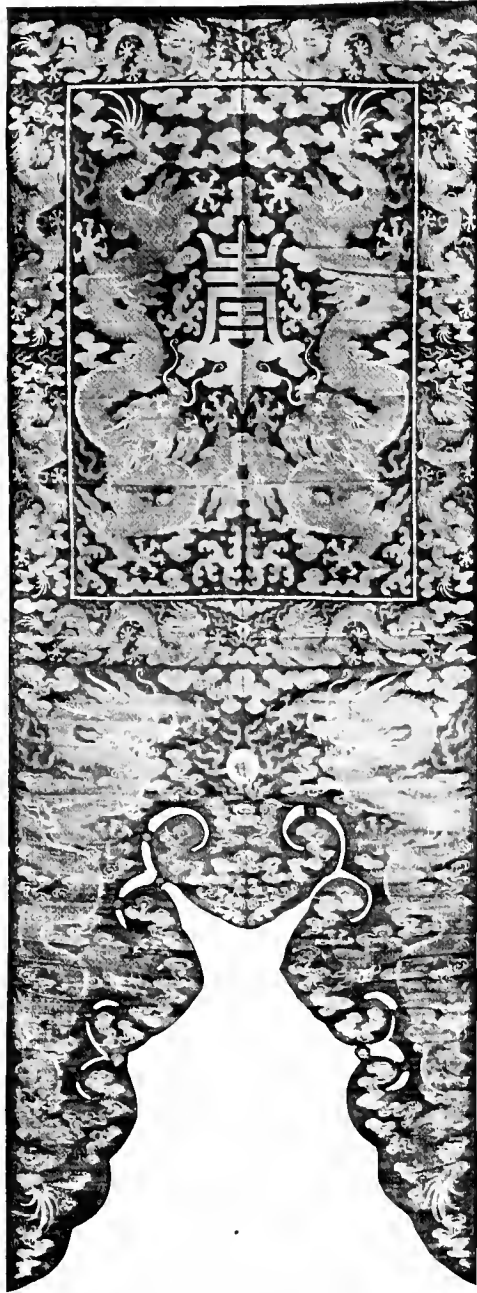
Companion to the preceding.

Length, 11 feet 10 inches; width, 4 feet.

289—CHINESE IMPERIAL BROCADE HANGING (*K'ang-hsi*)

Quadrilateral. Decoration, two dragons guarding a Shou character, among clouds, within an oblong field, surrounded by a border of eight dragons grasping in pairs for the flaming pearls of omnipotence, the whole in a soft old-gold, white and pink on a deep cerulean ground.

Length, 5 feet 9 inches; width, 4 feet 2 inches.



No. 286—CHINESE IMPERIAL BROCADE HANGING (*K'ang-hsi*)

Second and Last Afternoon

290—CHINESE IMPERIAL BROCADE HANGING (*K'ang-hsi*)

Companion to the preceding.

Length, 5 feet 9 inches; width, 3 feet 11 inches.

291—CHINESE IMPERIAL BROCADE HANGING (*K'ang-hsi*)

Companion to the preceding.

Length, 5 feet 9 inches; width, 4 feet.

292—CHINESE IMPERIAL BROCADE HANGING (*K'ang-hsi*)

In form of a long strip, the ground a slightly greenish sky-blue, with a border of dragons in a soft silvery white and cream white, the long blue field marked by a column of bold characters which show the original deeper blue of the ground, the gold embroidery in which they were executed having been abstracted. At the bottom of the field the border takes the design of waves, clouds and symbols, and below this two more dragons grasping for the jewel of power extend down the short flowing ends of the fabric, between which is cut a pendent sceptre-head.

Length, 17 feet 5 inches; width, 25½ inches.

(*Illustrated*)

293—CHINESE IMPERIAL BROCADE HANGING (*K'ang-hsi*)

Companion to the preceding; through the action of light and long exposure the color in the lower part has turned to a more pronounced greenish tone.

Length, 17 feet 5 inches; width, 25½ inches.

(*Illustrated*)

294—CHINESE IMPERIAL BROCADE HANGING (*K'ang-hsi*)

Companion to the preceding and similarly turned, throughout a large part of its length, to a greenish tone.

Length, 17 feet 11 inches; width, 25½ inches.

295—CHINESE IMPERIAL BROCADE HANGING (*K'ang-hsi*)

Companion to the preceding, and largely turned to the greenish hue.

Length, 17 feet 7 inches; width, 25½ inches.



No. 292



No. 293

CHINESE IMPERIAL BROCADE HANGINGS (*K'ang-hsi*)

Second and Last Afternoon

296—CHINESE IMPERIAL BROCADE HANGING (*K'ang-hsi*)

Quadrilateral. Rich and deep cerulean ground, with an ornamentation in a warm and soft old-gold, white and a full-bodied pink, depicting in the field two imperial dragons and a Shou character among cloud scrolls, the field set within a border of eight more dragons with the flaming jewels, in the same coloring.

Length, 6 feet; width, 4 feet 2½ inches.

297—CHINESE IMPERIAL BROCADE HANGING (*K'ang-hsi*)

Companion to the preceding, the pink somewhat pale.

Length, 5 feet 10½ inches; width, 3 feet 10 inches.

298—CHINESE IMPERIAL BROCADE HANGING (*K'ang-hsi*)

Companion to the preceding, with the fuller quality of pink.

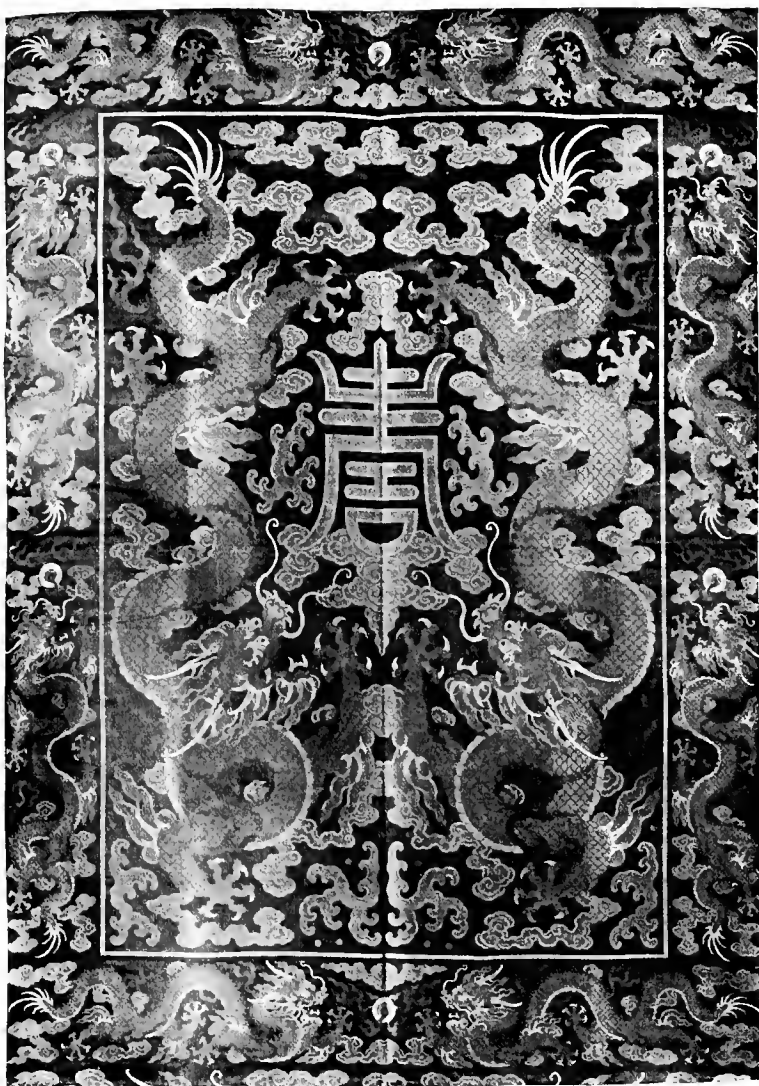
Length, 5 feet 10½ inches; width, 3 feet 10 inches.

(Illustrated)

299—CHINESE EMBROIDERED SILK BED CANOPY

Four-sided, with top; opened down the front at the centre, the two parts widely overlapping when closed. Fine thin silk of delicate greenish-white tone, embroidered on all sides with orchids, and on the side opposite entrance with a jardinière and vases of them, in soft emerald-green and fawn, white and varied blues, and heavy gold. The top, transparent sky-blue silk brocade patterned with Shou medallions and clouds. Suspended from four tall lacquer standards, with dragon brackets or arms at top and square bases, decorated with landscapes, lotus flowers and other motives.

Height, 6 feet 5 inches (on the front curtains there is a drop of 12½ inches additional, to allow the fabric to retain contact with the floor when the curtains are moved for ingress or egress); length, 7 feet 1 inch; width, 4 feet 9 inches; height of standards, 7 feet 5 inches.



No. 298—CHINESE IMPERIAL BROCADE HANGING (*K'ang-hsi*)

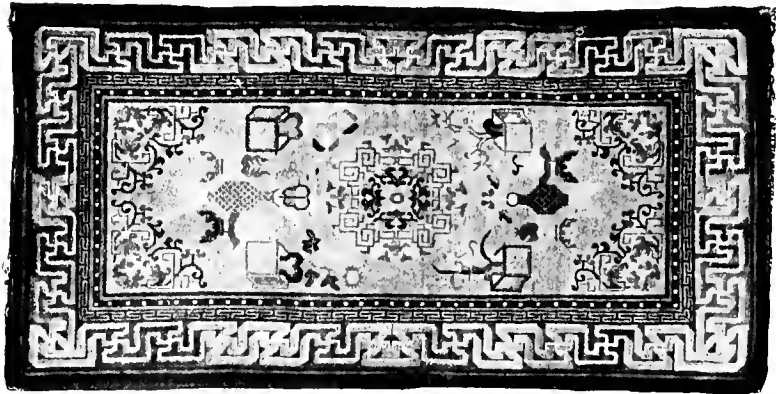
Second and Last Afternoon

300—TEAKWOOD AND TAPESTRY SCREEN (*Ch'ien-lung*)

Five-fold, the central fold the highest, and its neighboring sections taller than the wings. The frame teakwood, with decorations carved in relief and incised, and penciled in gold. The principal panels tapestries woven in soft neutral colors on a golden ground, with imposing personages in palace and gardens, and lancers, swordsmen and warriors with battle-axes, mounted and afoot, on land and on waves, before castellated walls. Subsidiary panels of rich brocade in floral and fruit motives. Backs in golden-yellow brocade.

Height, 6 feet 1 inch (wings, 5 feet 5½ inches).

ANTIQUE CHINESE RUGS AND CARPETS



301—ANTIQUE CHINESE MAT (*Ch'ien-lung*)

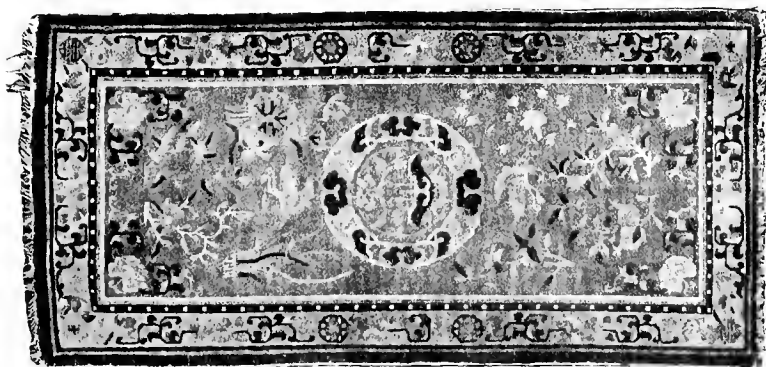
Thick, soft, velvety pile. Field with a light golden-tan sheen, decorated with a composite medallion, household ornaments, and peony and archaic phoenix-scroll corners, in orange-brown, white, and light and dark blue. Dot and fret borders.

Length, 4 feet 3 inches; width, 2 feet 2 inches.

302—ANTIQUÉ CHINESE MAT (*Ch'ien-lung*)

Soft, loose pile. A field of swastika lattice in dark sapphire on a ground of grayish turquoise is broken at the centre by a large medallion, and supports detached sprays, in light golden yellow, pink, and browns. Border of sprays and the endless-knot, in the brighter colors on a dark sapphire ground.

Length, 6 feet 3 inches; width, 3 feet.



303—ANTIQUÉ CHINESE MAT (*Ch'ien-lung*)

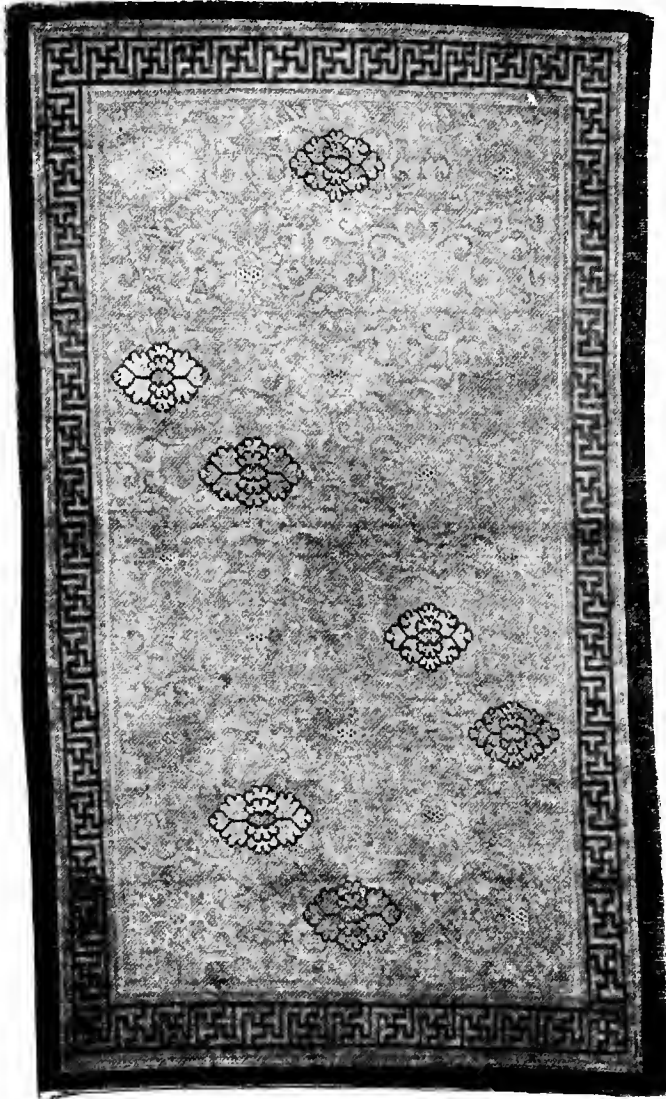
Soft, thick pile. Peach-red field with downy sheen, having a decoration in sapphire and turquoise blue, golden yellow, white and chocolate-brown, of fruit clusters, flower sprays and butterflies, and a central medallion and peony corners. Conventional peony scroll border with bats and Shou medallions.

Length, 5 feet 2 inches; width, 2 feet 7 inches.

304—ANTIQUÉ CHINESE RUG (*Ch'ien-lung*)

Rectangular field of pinkish apricot with soft sheen, sprinkled with sprays of plum, chrysanthemum and peony, and clusters of citron, peaches and pomegranates, amongst which conventional butterflies are scattered, all in white, turquoise and sapphire blue, and greenish old-gold. Border of the peony design in the several colors on gold ground.

Length, 6 feet 5 inches; width, 4 feet 4 inches.



305—ANTIQUE CHINESE RUG (*K'ang-hsi*)

Short silky pile. A soft apricot field is threaded by a foliar scroll in light golden yellow, on which are implanted large conventional peony figures in turquoise and sapphire and a richer golden yellow. Swastika border in sapphire on apricot, and soft brown boundary band.

Length, 6 feet 10 inches; width, 3 feet 10 inches.



306—ANTIQUE CHINESE RUG (*Ch'ien-lung*)

Storks in white, light blue, rich brown and golden yellow appear in a central medallion, and among cloud-scrolls of sapphire, turquoise and white, on a broad field of soft apricot. Peony design border in white and the two blues on a bright golden yellow ground.

Length, 6 feet 10 inches; width, 4 feet 5 inches.

Second and Last Afternoon

307—ANTIQUE CHINESE RUG (*K'ang-hsi*)

Quadrilateral field of deep sapphire-blue, with a rich peony scroll of highly conventionalized form, including stems and tendrils and leaves of various sizes, and large blossoms sometimes solid and sometimes of interrupted form, worked in a brownish golden-yellow, rich *café-au-lait*, white and light turquoise-blue. Key-fret border in two tones of brown, between white and turquoise guard stripes, swastika-fret border in sapphire on brown, and beyond other brown and bolden guard stripes an exterior band of soft camel's-hair brown.

Length, 8 feet 4 inches; width, 6 feet 4 inches.

(*Illustrated*)

308—ANTIQUE CHINESE RUG (*Ch'ien-lung*)

Soft, silky pile. Rectangular field of rich apricot with a fine light sheen, its ornamentation a profuse peony scroll with large and small flowers and interlacing foliations worked in deep sapphire, light turquoise and white. Guard stripes in the three colors embrace a border of golden yellow, to which the same decorative coloring is carried over in an ogre scroll and foliated figures. Exterior band of camel's hair in chestnut brown.

Length, 8 feet 6 inches; width, 5 feet 9 inches.

309—ANTIQUE CHINESE RUG

Soft red ground in field and border, the border a swastika fret in deep dark blue, the field decoration medallions, sprays and corners, all in the peony motive, in light and dark blue and white.

Length, 8 feet 7 inches; width, 5 feet 7 inches.



No. 307—ANTIQUE CHINESE RUG (*K'ang-hsi*)

310—ANTIQUE CHINESE RUG (*Ch'ien-lung*)

Soft, close, silky pile. In the oblong field, on an old-rose ground with delicate sheen, the hundred antiques decoration in pale turquoise and deep sapphire blue, white and golden-yellow, with dark brown. Lattice and swastika-fret borders, with intervening stripes, in the several colors, and brown exterior band.

Length, 8 feet 7 inches; width, 5 feet 9 inches.

311—ANTIQUE CHINESE RUG (*Ch'ien-lung*)

On an apricot field with archaic dragon-scroll corners in two blues and white, an affluent peony scroll in light golden-yellow with blossoms in white and the two blues, surrounding an archaic phoenix medallion in the same colors. Pale golden border bearing scrolls in the other colors, and brown boundary band.

Length, 8 feet 9 inches; width, 5 feet 5 inches.

(*Illustrated*)

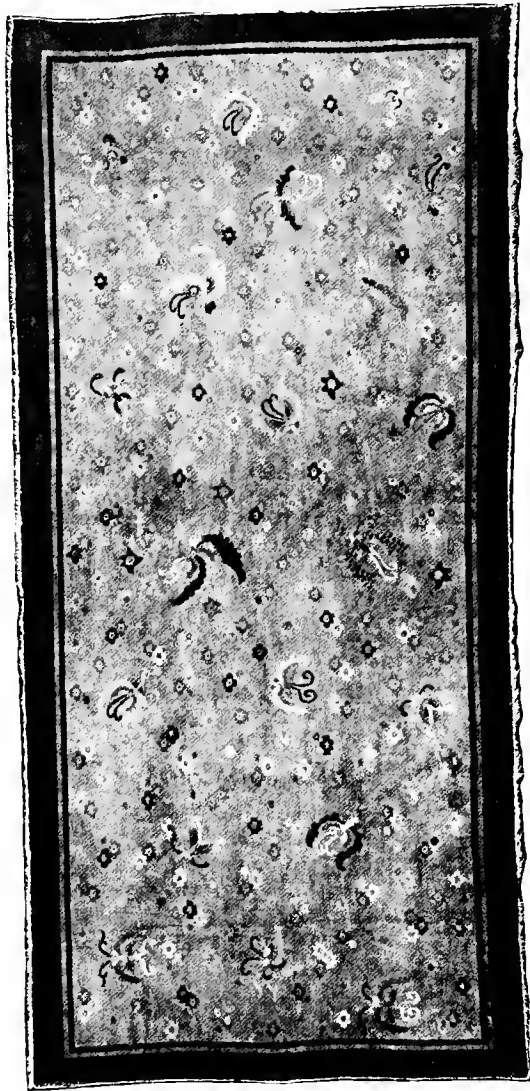
312—ANTIQUE CHINESE RUG (*Ch'ien-lung*)

Rectangular field of deep sapphire swastika-lattice, on a ground, originally white, become a soft *gris-souris*, the lattice interrupted at regular intervals by formal floral figures in apricot and peach notes, brown and a dull golden yellow. Two richly colored lattice and fret borders and an exterior band of sapphire-blue.

Length, 8 feet 10 inches; width, 5 feet 5 inches.



No. 311—ANTIQUE CHINESE RUG (*Ch'ien-lung*)



313—ANTIQUE CHINESE RUG (*Ch'ien-lung*)

Thick pile. Light, soft yellow field of dull golden note, *semé* with small blossoms, singly and in clusters, among which circulate large butterflies, in apricot tones, dark sapphire, light turquoise and white. Guard stripes of sapphire and turquoise, and a broad outer border or band of solid blue, of dark sapphire note.

Length, 10 feet 2 inches; width, 5 feet 10 inches.

314—ANTIQUÉ CHINESE RUG (*Ming*)

Presenting a mingling of soft and quiet tawny tones, enriched with a deep blue of sapphire quality and soft sheen, and in turn lightly relieved by a pale grayish-turquoise with delicate greenish trend. The field is given to a luxuriant, highly conventionalized floral scroll, suggesting the peony but with chrysanthemum and lotus elements, worked in tawny hues with a modicum of the turquoise, within the rich sapphire ground. At centre an archaic dragon medallion; corners in the same archaic motive. Two broad borders, and a solid exterior band.

Length, 8 feet 10 inches; width, 5 feet 11 inches.

(*Illustrated*)

315—ANTIQUÉ CHINESE RUG (*K'ang-hsi*)

Blue and white rectangular field, the ground white, bearing eighteen floral-scroll medallions each enclosed within angular-scroll corners, in rich and deep sapphire-blue. Key-fret border in pale rose and sapphire, and swastika border in sapphire on a golden-apricot ground.

Length, 9 feet; width, 5 feet 5 inches.

316—ANTIQUÉ CHINESE RUG (*Ch'ien-lung*)

Rich golden-orange field, on which are implanted a peony medallion enclosing a medallion of five dogs Fu, huge peony sprays and corners, sprays of plum and chrysanthemum, and conventional bats and butterflies, executed in light and dark blue, white, brown, peach-red and golden yellow. Golden yellow T-fret border and scroll border in the peony design.

Length, 9 feet 2 inches; width, 6 feet 8 inches.

(*Illustrated*)



No. 314—ANTIQUÉ CHINESE RUG (*Ming*)



No. 316—ANTIQUE CHINESE RUG (*Ch'ien-lung*)

317—ANTIQUÉ CHINESE RUG (*K'ang-hsi*)

Rectilinear field marked off by four guard stripes, the whole of it given over to a geometrical ornamentation of interlacing angular figures, in pale turquoise and rich sapphire blue, white and golden tones, on a pinkish-apricot ground. Swastika-lattice border in deep sapphire on light gold.

Length, 8 feet 3 inches; width, 4 feet 3 inches.

318—ANTIQUÉ CHINESE RUG (*Ch'ien-lung*)

Oblong field of soft creamy white, adorned in golden yellow, peach-red, apricot-brown, turquoise and sapphire blue, with a large double medallion, corners and large sprays in the peony motive, and other sprays of plum, lotus, peach and pomegranate. T-fret border, and swastika-fret border overlain by sprays; sapphire-blue exterior band with soft sheen.

Length, 10 feet 7 inches; width, 6 feet 2 inches.

(Illustrated)

319—ANTIQUÉ CHINESE RUG (*K'ang-hsi*)

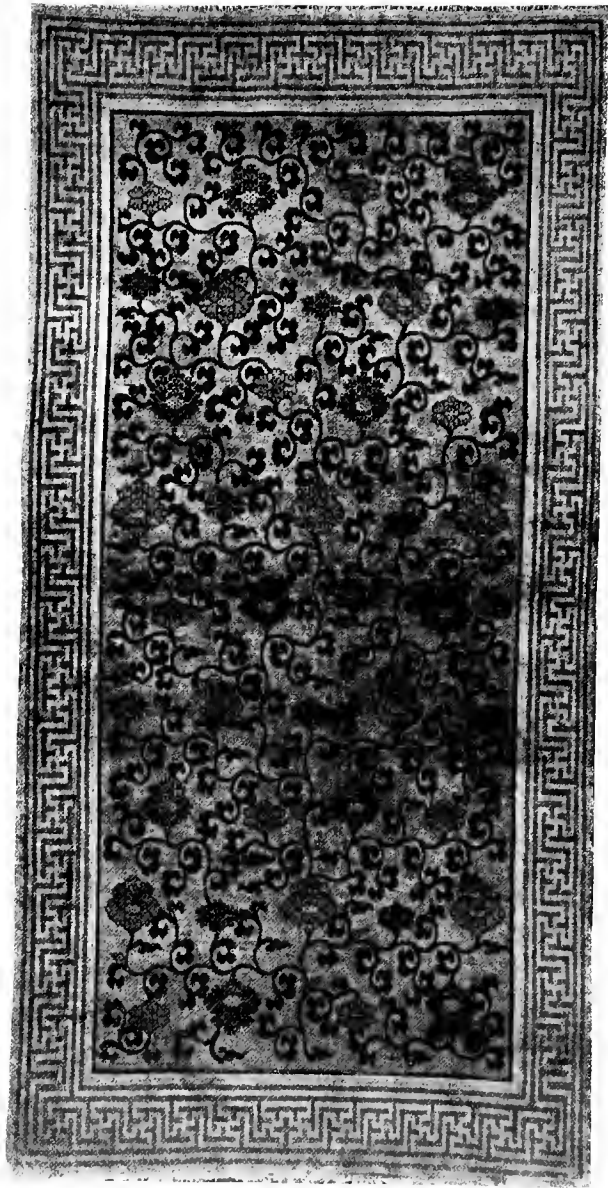
A bold conventional floral scroll in greenish turquoise-blue and deep sapphire-blue is woven throughout a rectilinear field of brownish-yellow tawny note, with a soft sheen, bounded by a rich seal-brown guard stripe. Swastika-fret border in pale grayish turquoise-blue and a light, warm tan.

Length, 10 feet 8 inches; width, 6 feet 6 inches.

(Illustrated)



No. 318—ANTIQUÉ CHINESE RUG (*Ch'ien-lung*)



No. 319—ANTIQUÉ CHINESE RUG (*K'ang-hsi*)



No. 321—ANTIQUÉ CHINESE RUG (*Ch'ien-lung*)

320—ANTIQUE CHINESE RUG (*Ch'ien-lung*)

Long close-lying loose pile. On a rich apricot field a swastika lattice in light golden yellow, a foliate medallion in the golden yellow at the centre enclosing a circular medallion of floral motive in light and dark blue, white and brown; at ends wave motive, and striated pattern, with a flame pink appearing with the other colors. Along sides, conventional peony border on rich sapphire-blue ground.

Length, 7 feet 5 inches; width, 4 feet.

321—ANTIQUE CHINESE RUG (*Ch'ien-lung*)

Soft peach-toned ground, brilliantly illuminated with rich golden yellow, white, pale, delicate turquoise-blue and rich sapphire-blue, and varied notes of golden brown, found in fruit and plant forms and butterflies, a medallion and formal corners. Peony and scroll border in the same bright colors on the same ground.

Length, 10 feet 10 inches; width, 5 feet 5 inches.

(*Illustrated*)

322—ANTIQUE CHINESE RUG (*K'ang-hsi*)

The whole broad field given to an octagonal lattice pattern in pale grayish-turquoise, threaded by a deep, rich brown, on a tawny ground, with the lattice crossings marked by quadrangular figures in brown enclosing four small squares of light apricot. Swastika-fret border in dark sapphire blue.

Length, 11 feet 5 inches; width, 6 feet 3 inches.



No. 323—ANTIQUE CHINESE CARPET (*Ch'ien-lung*)

323—ANTIQUE CHINESE CARPET (*Ch'ien-lung*)

Blue and white. Soft deep pile. On a rich cream-white ground with a delicate sheen, which extends both through field and borders, an elaborate decoration in gray-blue and deep sapphire-blue, with the use here and there of stippled effects. The field has extensive borders, in the peony motive, between which and a large peony medallion in the centre lie sprays and baskets of flowers and fruits, with table screens, brush holders and other objects of the cultivated household. A T-fret border is followed by a bold peony pattern border, and that by an exterior band of rich sapphire-blue.

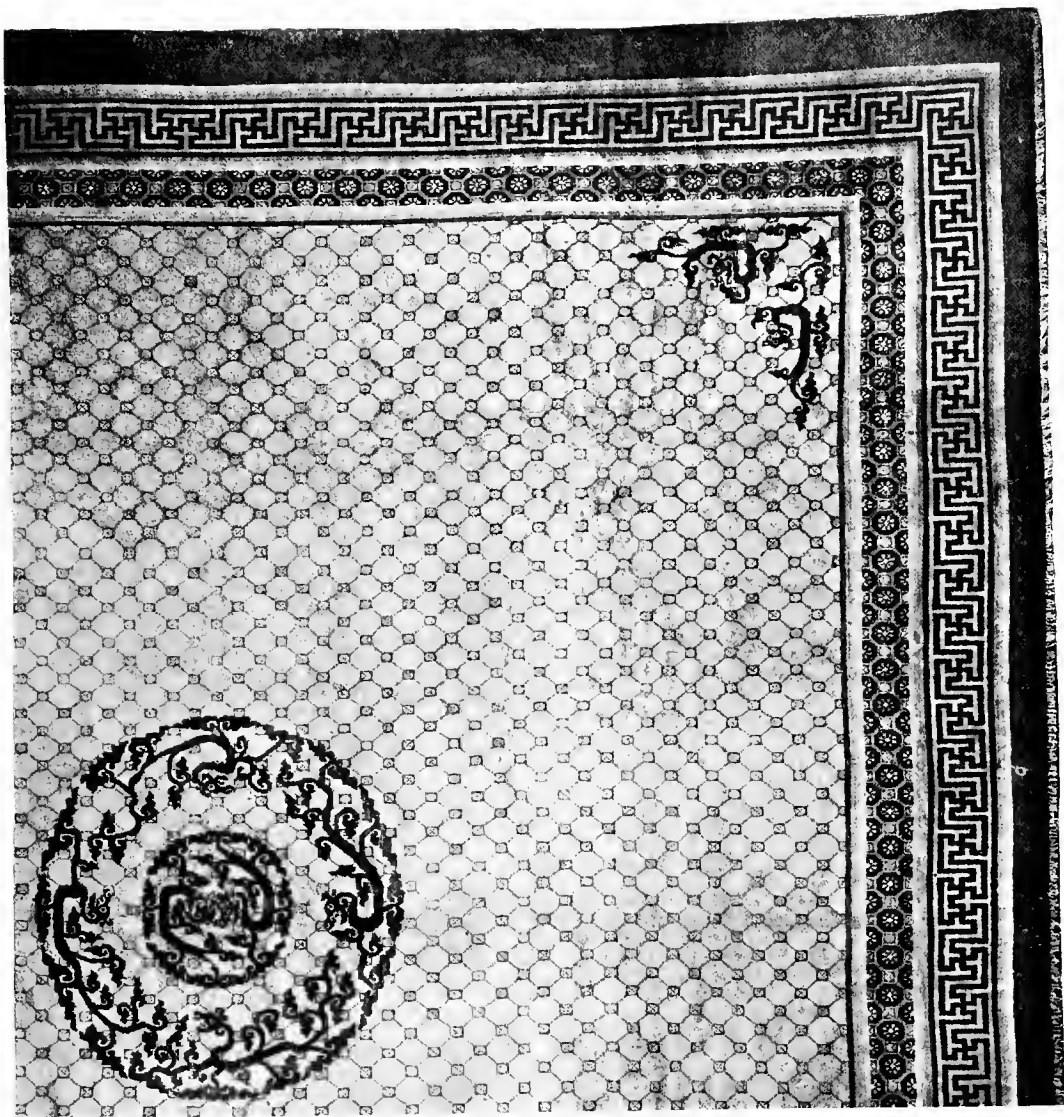
Length, 12 feet 10 inches; width, 11 feet 4 inches.

(Illustrated)

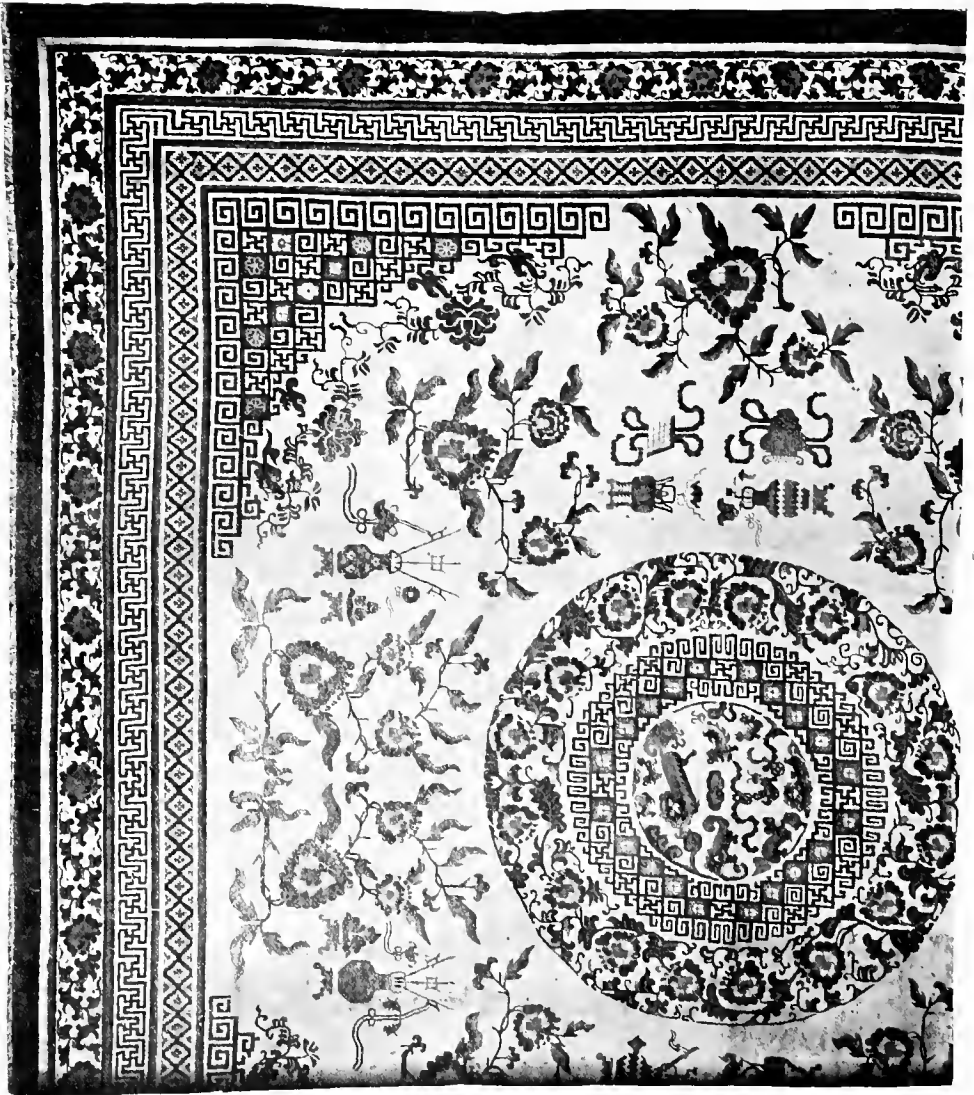
324—ANTIQUE CHINESE CARPET (*K'ang-hsi*)

Soft velvety pile. Large square field in a dark tawny brown of rich quality, wholly given over to a highly elaborated peony scroll in a fine deep sapphire blue, with unobtrusive reliefs here and there in a quiet yellow and soft turquoise in details of the lesser blossoms. A narrow key-fret border on yellow ground is succeeded by a bolder swastika border on a ground of the field color, both in the deep sapphire, with guard stripes of grayish turquoise, and a boundary band of dark brown camel's hair encompasses the whole.

Length, 14 feet 5 inches; width, 13 feet 2 inches.



No. 325—ANTIQUÉ CHINESE CARPET (*K'ang-hsi*)



No. 326—ANTIQUÉ CHINESE CARPET (*Ch'ien-lung*)

325—ANTIQUE CHINESE CARPET (*K'ang-hsi*)

Dense, short, firm pile, of soft, silky surface. The great square field of soft apricot brown carries a finely woven lattice in rich deep brown outlined with pale turquoise, at the lattice-crossings being small parallelograms in the deep brown enclosing yellowish fields with brown dots, and the larger lattice spaces bearing rosettes in a faint golden-yellow. At the centre a large medallion enclosing a smaller one, both in the archaic dragon motive and both in rich sapphire-blue. Floral-lattice and swastika-fret borders involving the several colors, and a broad exterior band of dark brown.

Length, 15 feet 10 inches; width, 15 feet 2 inches.

(Illustrated)

326—ANTIQUE CHINESE CARPET (*Ch'ien-lung*)

Blue and white, with warmer color added. Deep, loose pile. The "white" field has a pale tan surface, with a delicate sheen, and the same ground color runs through the three borders to a broad boundary band of rich sapphire-blue, the borders being respectively a floral lattice, a swastika-fret and a peony scroll. The field decoration is in deep sapphire and a dark grayish-blue, warmed by notes of apricot-brown and peach-red, and consists of a medallion of nine dogs Fu enclosed within a medallion of angular-scroll, that in turn surrounded by a peony-scroll medallion, and of large sprays and vases of flowers and fruits, besides great formal corners involving both the peony and the archaic dragon-scroll.

Length, 20 feet 7 inches; width, 18 feet 2 inches.

(Illustrated)

AMERICAN ART ASSOCIATION,

MANAGERS.

THOMAS E. KIRBY,

AUCTIONEER.

FOR INHERITANCE TAX

AND OTHER PURPOSES

THE AMERICAN ART ASSOCIATION

IS EXCEPTIONALLY WELL EQUIPPED
TO FURNISH

INTELLIGENT APPRAISEMENTS

OF

ART AND LITERARY PROPERTY
JEWELS AND PERSONAL EFFECTS OF EVERY
DESCRIPTION

IN CASES WHERE

PUBLIC SALES ARE EFFECTED

A NOMINAL CHARGE ONLY WILL BE MADE

THE AMERICAN ART ASSOCIATION

MADISON SQUARE SOUTH
NEW YORK

TELEPHONE, 3346 GRAMERCY

COMPOSITION, PRESSWORK
AND BINDING BY



