

AN IMPORTANT COLLECTION OF  
ANTIQU  
CHINESE ART TREASURES

The Property of  
HUGO E. BAUER  
of New Rochelle, N. Y.

To be Sold  
Thursday, Friday and Saturday Afternoons  
February Seventeenth, Eighteenth and Nineteenth  
at two-thirty o'clock



THE ANDERSON GALLERIES

MITCHELL KENNERLEY, President

PARK AVENUE AND FIFTY-NINTH STREET, NEW YORK

1921

*Indefed*  
*JAR*  
NO. OF COPIES

5

Sale Number 1558  
On Public Exhibition From Wednesday, February Ninth

THE BAUER COLLECTION  
*of*  
Antique Chinese Art Treasures

Consisting of  
Rare and Beautiful Chinese Porcelains  
with Important Specimens of the  
J. Pierpont Morgan and other Famous Collections

Magnificent Pieces of  
Jade, Rock Crystal and Other Hard Stones  
Chinese Embroideries, Furniture and Glass

And a Superb Collection of  
Three Hundred Chinese Snuff Bottles



To be Sold  
Thursday, Friday and Saturday Afternoons  
February Seventeenth, Eighteenth and Nineteenth  
at two-thirty o'clock

THE ANDERSON GALLERIES  
MITCHELL KENNERLEY, President  
PARK AVENUE AND FIFTY-NINTH STREET, NEW YORK

Handwritten signature in cursive script.

## CONDITIONS OF SALE

1. All bids to be PER LOT as numbered in the Catalogue.
2. The highest bidder to be the buyer; in all cases of disputed bids the lot shall be resold, but the Auctioneer will use his judgment as to the good faith of all claims and his decision shall be final. He also reserves the right to reject any fractional or nominal bid which in his judgment may delay or injuriously affect the sale.
3. Buyers to give their names and addresses and to make such cash payments on account as may be required, in default of which the lots purchased to be resold immediately.
4. The lots to be taken away at the buyer's expense and risk within twenty-four hours from the conclusion of the sale, and the remainder of the purchase money to be absolutely paid on or before delivery, in default of which The Anderson Galleries, Incorporated, will not be responsible if the lot or lots be lost, stolen, damaged, or destroyed, but they will be left at the sole risk of the purchaser, and subject to storage charges.
5. To prevent inaccuracy in delivery, and inconvenience in the settlement of purchases, no lot will be delivered during the sale.
6. All lots will be exposed for public exhibition in The Anderson Galleries before the date of sale, for examination by intending purchasers, and The Anderson Galleries, Incorporated, will not be responsible for the correctness of the description, authenticity, genuineness, or for any defect or fault in or concerning any lot, and makes no warranty whatever, but will sell each lot exactly as it is, WITHOUT RECOURSE.
7. TERMS CASH. Upon failure to comply with the above conditions any sum deposited as part payment shall be forfeited, and all such lots as remain uncleared after twenty-four hours from the conclusion of the sale, will be resold by either private or public sale at such time as The Anderson Galleries, Incorporated, shall determine, without further notice, and if any deficiency arises from such re-sale it shall be made good by the defaulter at this sale together with all the expenses incurred thereby. This condition shall be without prejudice to the right of The Anderson Galleries, Incorporated, to enforce the contract with the buyer, without such re-sale.
8. BIDS. We make no charge for executing orders for our customers and use all bids competitively, buying at the lowest price permitted by other bids.
9. The Anderson Galleries, Incorporated, will afford every facility for the employment of carriers and packers by the purchasers, but will not be responsible for any damage arising from the acts of such carriers and packers.

*Priced copy of the Catalogue may be secured for fifty cents  
for each session of the sale*

### THE ANDERSON GALLERIES

PARK AVENUE AND FIFTY-NINTH STREET, NEW YORK

Telephone, Plaza 9356

Catalogue on request.

SALES CONDUCTED BY MR. FREDERICK A. CHAPMAN

# Guarantee

to

PURCHASERS at SALE No. 1558

held at

THE ANDERSON GALLERIES

February 17, 18, 19, 1921



EVERY number in this catalogue has been carefully described, and special care has been taken to give the right periods. Two well-known experts on Chinese Porcelains have verified all statements as to the age of the various pieces, and a full guarantee as to the genuineness of all items can be given to the purchaser.

The purchase price will be refunded to any buyer who can prove that any article bought at this sale is not genuine and not of the period to which it is attributed. This guarantee holds good for three months from date of sale.

A handwritten signature in cursive script, likely reading "H. H. Anderson", with a long horizontal flourish underneath.



## The Treasured Snuff-Bottles of the Celestials

*by*

GARDNER TEALL

(Reprinted from March, 1918, issue of *House and Garden*)

One day when, happening into a Chinese shop where some antiques and curios were offered for sale, I chanced to pick up a tiny bottle. It was not over  $2\frac{1}{2}$ " high. Its weight proclaimed it crystal. A miniature scene and inscription were skilfully and beautifully painted inside.

"But what a tiny bottle. What was it used for?"

And the Celestial said: "Much little bottle China old time fine like this. More other bottle kinds use snuff for, medicine for. Look yes you please."

The Celestial showed me how the ivory "spoon," running the depth of the bottle and fastened in the coral stopper, was manipulated to fetch forth portions of anything a vial of this sort might contain. In snuff-taking the "spoon" was emptied on the thumb nail and the "sniff" deftly taken. That was my introduction to the fact that snuff-taking in the Orient had fostered a fashion that produced objects of vertu fully as interesting, certainly more curious and as beautiful, as the snuff-boxes affected by the Europeans of the 17th and 18th Centuries.

After this is it any wonder that the collector's instinct should have led me to be enthusiastic about Chinese snuff-bottles as a field for browsing? And soon I found that the fascination of these little objects d'art had exerted no small influence on other collectors.

Fine snuff-bottles were not to be found at every turning. Nevertheless they were not so rare as one might imagine, although as with any other class of art objects supreme examples were difficult to obtain at any price. Nearly all of these bottles that we see in collections are snuff-bottles, though many of them were undoubtedly used for medicines, as the Chinese were great medicine consumers.

Among the ornamental articles of Chinese dress, says an authority on Eastern costume, in none do they go to so much expense and style as in the snuff-bottle, which is often carved from stone, amber, agate and other rare minerals with most exquisite taste. Jade, of course, was most precious of all and often imitated in glass, as were topaz, amethyst, tourmaline, amber, and other materials. Collectors in Europe and America are beginning to realize what interesting things in the way of snuff-bottles the Chinese glass-worker produced.

The fine porcelain snuff-bottles of the Celestials are indeed things to be treasured. We find them in endless colors and designs. Some are plain, some with under-glaze decoration, some cased with pierced porcelain casing, others with moulded decoration, and still others with painted decoration. Occasionally one finds a porcelain bottle whose glaze intentionally simulates glass.

The Chinese are skilful lapidaries. Their work in shaping jade and other hard stones has not been surpassed. The Celestial craftsman likewise shows great ingenuity in taking advantage of any irregularity in form or color of the stone he is working. The various quartzes are worked by the Chinese on the same treadle bench which they use in fashioning jade, and they work quartz stones along the same general lines.

The writer is indebted to an American collector of Chinese snuff-boxes, Mr. H. E. Bauer, for permission to reproduce some of the snuff-bottles in the Bauer Collection. There are a number of fine private collections in America and several notable public ones. Among the latter is that in the Metropolitan Museum, New York. An examination of these illustrations will indicate the unlimited range in the decoration, form, etc., of these objects. It will be seen, however, that they are all nearly of a size dictated by general convenience in carrying in pockets and pouches. The stoppers of these Chinese snuff-bottles are scarcely less beautiful in many instances than the bottles themselves. As a general rule the stoppers are of materials more precious than that used for the bottle. In the Bauer Collection, for instance, is a Blue-and-White porcelain snuff-bottle of the Ch'ien-lung Period (1736-1796) with a stopper inset with semi-precious stones. Pearls and precious stones are less often employed, and I have never seen a Chinese snuff-bottle stopper inset with diamonds. The diamond is a stone the Chinese have never appeared to regard highly except for its utilitarian possibilities. Coral is a favorite material for the snuff-bottle stoppers. A number of such stoppers are in the Bauer Collection. Ivory is not an uncommon material for stoppers, but fine ivory snuff-bottles are very rare, as likewise are good cloisonne enamel bottles. One of the finest cloisonne of which I know is to be found in the Bauer Collection.

There is no gainsaying that Chinese snuff-bottles cannot fail to attract the collector by reason of their aesthetic interest. At the same time few objects open up a more interesting intellectual treat than is afforded by a study of these tiny bottles in respect to the subject of their decoration.

Surely the treasured snuff-bottles of the Celestials offer the collector much that is intellectually delectable and as really interesting specimens are not beyond the moderate purse their enjoyment does not necessitate the sacrifices that might deter the collector whose enthusiasm might be dampened by other objects of art that seem as hopelessly out of reach as were the grapes to Tantalus!

▼   ▼  
▼

*The above article and cover design reproduced by permission of  
House and Garden*

THE BAUER COLLECTION  
*of*  
Chinese Art Treasures

ORDER OF SALE

**THURSDAY AFTERNOON, FEBRUARY SEVENTEENTH**

A COLLECTION OF CHINESE SNUFF BOTTLES	1-100
A COLLECTION OF OLD CHINESE GLASS	101-118
A COLLECTION OF TEA POTS AND CUPS AND SAUCERS	119-128
A COLLECTION OF PORCELAIN BOWLS	129-154
A COLLECTION OF BLUE AND WHITE PORCELAINS	155-177

**FRIDAY AFTERNOON, FEBRUARY EIGHTEENTH**

A COLLECTION OF CHINESE SNUFF BOTTLES	178-277
A COLLECTION OF MINIATURE PIECES	278-305
A COLLECTION OF SINGLE COLOR PORCELAINS	306-337
A COLLECTION OF CHINESE FURNITURE AND VARIOUS OTHER OBJECTS	338-367

**SATURDAY AFTERNOON, FEBRUARY NINETEENTH**

A COLLECTION OF CHINESE SNUFF BOTTLES	368-467
A COLLECTION OF CHINESE COATS, EMBROIDERIES AND WALL HANGINGS	468-491
A COLLECTION OF PLATES AND PLAQUES	492-521
A COLLECTION OF OBJECTS OF JADE, ROCK CRYSTAL AND OTHER HARD STONES	522-540
A COLLECTION OF DECORATED PORCELAINS	541-571

## FIRST SESSION

Thursday Afternoon, February 17, 1921, at 2:30 o'clock

Lots 1—177

---

### A COLLECTION OF CHINESE SNUFF BOTTLES

Lots 1—100

*Snuff taking was not known in China before the middle of the seventeenth century, under K'ang-Hsi's reign. However, very few snuff bottles can be credited to this period. Medicine bottles, which were used for centuries and miniature vases of that period were converted into snuff bottles by the addition of a stopper. Snuff bottles as such, were evidently not made before the latter part of Yung-Chêng's reign and were produced in larger quantities under Ch'ien-lung and his successors. It is very difficult to determine exactly the age of snuff bottles, especially of those made of hard stones. Most snuff bottles listed in this catalogue can be credited to Ch'ien-lung or Tao Kuang. Wherever the origin could be traced to earlier times, the periods are given in the catalogue.*

#### 1 GLASS SNUFF BOTTLE

Opaque glass of yellow ground with darker veining and red mottling. Stopper: coral and turquoise.

#### 2 PORCELAIN SNUFF BOTTLE

Cylindrical shape. White porcelain with blue decoration. At the foot and neck are rows of clouds, on the shoulder five bats and on the body six renderings of the "shou" mark of longevity.

#### 3 PORCELAIN SNUFF BOTTLE

Flattened oil jar shape, of celadon porcelain. Two handles at neck and Ju-i sceptre head decoration in low relief. Coral glazed porcelain stopper.

#### 4 GLASS SNUFF BOTTLE

White frosted glass, in bulbous flask shape. Twelve medallions carved in cameo style in rich blue, each containing the blossom of a flower representing the twelve months of the year. Lateral tiger head handles also carved in blue. Stopper of amber.



- 5 PORCELAIN SNUFF BOTTLE  
Clear white, hard paste porcelain in double fish shape, and shows diagrams of the Pa-Kwa, carved in relief.
- 6 GLASS SNUFF BOTTLE  
Colored opaque glass of ruby red, interspersed with yellow flecks, neck and shoulders being chocolate brown and the narrow sides veined with brown longitudinal stripes. Stopper: green glass.
- 7 ROCK CRYSTAL SNUFF BOTTLE  
Slender flask shape; frosted yellow rock crystal of rare type. Ivory stopper.
- 8 IVORY SNUFF BOTTLE  
Ivory, carved in gourd shape, with original stopper of same material.
- 9 ENAMEL SNUFF BOTTLE  
Cylindrical; rich deep blue enamel on copper, interspersed with gold, in imitation of lapis-lazuli. Stopper: lapis-lazuli.
- 10 PORCELAIN SNUFF BOTTLE  
Heart shape. White porcelain with design of dragon in red among green waves. Stopper: blue glass on silver.
- 11 POTTERY SNUFF BOTTLE  
Blue glazed pottery, representing two boys holding a vase. Stopper: ivory.
- 12 AMBER SNUFF BOTTLE  
Slender flask shape. Clear yellow amber. Green glass stopper.
- 13 AGATE SNUFF BOTTLE  
Slender flask shape. Banded agate, a broad band of white running through the center of gray agate.
- 14 GLASS SNUFF BOTTLE  
In shape of pilgrim bottle. Ruby glass of rich tone with yellow amber stopper.

- 15 GLASS SNUFF BOTTLE  
Rounded flask shape. Mottled glass, colored in imitation of clouded amber. Stopper studded with stones.
- 16 GLASS SNUFF BOTTLE  
Flask shape. Opaque glass of warm yellow tone. Green jade stopper.
- 17 GLASS SNUFF BOTTLE  
Bulbous flask shape of black opaque glass with gray veins, in imitation of dark marble. Stopper: green glass.
- 18 GLASS SNUFF BOTTLE  
Canton glass bottle, minutely painted in the interior with a genre picture: a man on a donkey and accompanied by a boy, passing over a bridge. A winter landscape forms the scenery. On the reverse a picture of springtime, with blossoms, leaves and insects. Stopper: amber.
- [SEE ILLUSTRATION ON PAGE 13]
- 19 IVORY SNUFF BOTTLE  
Quaint cylindrical shape broadening toward the foot, with narrow neck. Stopper: turquoise colored.
- 20 GLASS SNUFF BOTTLE  
Rounded flask shape, opaque glass of yellow tone with red and blue mottling.
- 21 GLASS SNUFF BOTTLE  
Large flask shape, plain, of clear glass without a flaw. Coral stopper. Beautiful piece.
- 22 AGATE SNUFF BOTTLE  
Very rare agate, showing natural white splashes on pale brown ground. Tiger heads, holding rings carved on both narrow sides. Tourmaline stopper.
- 23 GLASS SNUFF BOTTLE  
Flattened ovoidal shape, with rudimentary handles. Glass, colored to resemble opaque brown amber. Green jade stopper.

- 24 AGATE SNUFF BOTTLE  
Grayish agate with a decoration of a man on a donkey, followed by a boy holding a branch, carved in relief in an adjacent layer of white agate. Stopper also of white agate.
- 25 PORCELAIN SNUFF BOTTLE  
White porcelain with design of green dragon on each side of the bottle. Green glass stopper.
- 26 PORCELAIN SNUFF BOTTLE  
In form of a figure, decorated in five colors. Stopper forms the hat. The figure represents the Taoist Liu Hai with strings of gold cash luring the three-legged toad. Unique piece.
- [SEE ILLUSTRATION ON PAGE 13]
- 27 BRONZE SNUFF BOTTLE  
Cylindrical shape with joined broad foot. Gilt bronze with two incised panels showing decorations of tree branches and birds in relief.
- 28 JASPER SNUFF BOTTLE  
Very large size, with bright polish. Jasper—one side uniformly dark green, the other mottled in many different colors. Stopper of rock crystal on metal ring.
- 29 LAPIS-LAZULI SNUFF BOTTLE  
Tapering flask shape. Lapis-lazuli of rich and typical blue with metallic sprinkling. Dome cover to match.
- 30 JADE SNUFF BOTTLE  
Club-shaped, of white jade with decoration of conventional flower design in low relief. Coral stopper.
- 31 JADE SNUFF BOTTLE  
Slender ovoidal shape of sea-colored jade with darker markings. On each side the Shou mark of longevity is carved, surrounded by floral decorations.
- 32 ROCK CRYSTAL SNUFF BOTTLE  
Hexagon shape. Clear, flawless rock crystal. Silver stopper.

- 33 PORCELAIN SNUFF BOTTLE YUNG CHÈNG  
Square shape. Soft paste porcelain with large crackle, decorated with a river landscape and figures in blue. Six-character mark of the Yung Chèng period. Silver and amber stopper. Very important specimen.

[SEE ILLUSTRATION ON PAGE 13]

- 34 BRASS SNUFF BOTTLE  
In shape of pilgrim bottle with lateral handles. Brass with panels on both sides, one with design of a crane, the other of a fawn, emblems of good fortune. Original stopper of same material.
- 35 GLASS SNUFF BOTTLE  
Pilgrim bottle shape. Glass of jade colored white with cameo carving in red of conventional lotus flower design. Green glass stopper.
- 36 AGATE SNUFF BOTTLE  
Small rounded flask shape. Gray translucent agate, decorated in interior with painting of fishes among aquatic grasses.
- 37 JADE SNUFF BOTTLE  
Yellowish jade, mottled in the warm hues of ferrous corrosion, so-called "Lion skin jade," brilliantly polished, of irregular pebble form as found in nature.
- 38 GLASS SNUFF BOTTLE  
Bulbous shape. Dark brown opaque glass with reddish veinings, in imitation of agate. Green jade stopper.
- 39 JADE SNUFF BOTTLE  
Greyish-yellow jade, square shaped, with inscriptions in relief. Green jade stopper.
- 40 JADE SNUFF BOTTLE  
Jar-shaped. Brilliantly polished green jade with nebulae of different colors. Green jade stopper.
- 41 AGATE SNUFF BOTTLE  
White agate with natural veins. Very thin carving, highly polished.

- 42 TOURMALINE SNUFF BOTTLE  
Elongated heart shape. Rose colored tourmaline, with incised design of a crane. Original stopper.
- 43 WOODEN SNUFF BOTTLE  
Heart shape. Wood carved with figures of Chinese sages, seated under pine trees. Coral porcelain stopper.
- 44 AGATE SNUFF BOTTLE WITH INSIDE PAINTING  
Large size, of clear translucent agate with carved lateral handles. On both broad sides are painted in the interior in delicate colors and perfect execution scenes of Taoist lore, representing the eight Immortals with their respective emblems. Unusual piece.  
[SEE ILLUSTRATION ON PAGE 13]
- 45 JADE SNUFF BOTTLE  
Flattened jar shape, carved of greyish-white jade. Green glass stopper.
- 46 TWIN SNUFF BOTTLE  
Carved of sea pine, representing the Taoist rishi Han Shan, who is holding a scroll and expounding its contents to his companion Shih-te. The latter is holding in his hand a straw broom. Stoppers form the hats of the two. Very fine carving. Unusual piece.  
[SEE ILLUSTRATION ON PAGE 13]
- 47 PORCELAIN SNUFF BOTTLE  
Coral red glazed porcelain, fashioned in shape of the double fish, the emblem of felicity.
- 48 GLASS SNUFF BOTTLE  
Painted on the inside with landscape and figures, in delicate colors. Stopper: colored glass.
- 49 ENAMEL SNUFF BOTTLE  
Painted enamel on foundation of copper. The design, painted in delicate colors and of perfect technique, shows a pastoral scene. Two ladies are feeding three sheep which are driven home by their shepherd. All figures are clad in European costumes. The painting is evidently a copy of a Limoges enamel. Stopper: chiselled, gilt bronze. Beautiful specimen of Chinese enamel.



18



26



46



44



55



58



70



87



75



33



84

- 50 GLASS SNUFF BOTTLE  
Flattened circular shape with applied band of opaque black glass, leaving on each side a panel of clear glass; these panels are painted on the inside. On the obverse is a landscape, and on the reverse a cat sitting in a tree and leering at a butterfly. Jade stopper.
- 51 ONYX SNUFF BOTTLE  
Graceful flask shape. The greyish-black stone is veined in beautiful design with a lighter strata. Coral red stopper.
- 52 SNUFF BOTTLE  
A natural Chinese Chestnut, mounted in silver, has been transformed into a snuff bottle.
- 53 GLASS SNUFF BOTTLE  
Pale blue glass carved in cameo fashion with two coiled hydras in a lighter colored layer. Stopper of amber and glass.
- 54 AGATE SNUFF BOTTLE  
Bulbous flask shape of yellowish translucent agate with carving in relief of camel, fox, monkey, bird, fly and bat. The carving is of excellent quality. Stopper: carved fei-tsui jade.
- 55 HORN SNUFF BOTTLE  
Carved in gourd shape out of the horn of the Rhinoceros. Elaborate carving of sea monsters amid waves, all over bottle. Stopper also of horn forming the stem of the fruit. Very rare specimen.
- [SEE ILLUSTRATION ON PAGE 13]
- 56 PORCELAIN SNUFF BOTTLE YUNG CHÊNG  
Soft paste porcelain, blue and white, slender cylindrical form. Decorated with an imperial five-clawed dragon playing with flamed ball, in brilliant sapphire-blue on a rich cream-white ground with fine crackle. Dragon mark on base. Very fine piece.
- 57 PEWTER SNUFF BOTTLE  
Heart shape, with decorations of birds, rocks and flowers in panels. Stopper of coral on silver. Pewter bottles are seldom found.

58 GLASS SNUFF BOTTLE

Clear glass of opal-like iridescence with carving in cameo style in red. The design shows a number of symbols which are used in China to keep evil spirits away. Two of these demons are shown with their carts; the one with his empty cart looking for a new victim, while the other one is returning with a victim in his cart. A marvelous carving, executed with unusual skill and surety in design.

[SEE ILLUSTRATION ON PAGE 13]

59 PORCELAIN SNUFF BOTTLE

YUNG CHÊNG

Bottle shaped. White porcelain of purest quality with incised decoration of scattered medallions, containing floral motives. Important specimen.

60 AGATE SNUFF BOTTLE

Yellow, semi-translucent agate, carved in form of grotesque, horned fish.

61 PORCELAIN SNUFF BOTTLE

Tall cylindrical shape. White porcelain with large crackle.

62 TOPAZ SNUFF BOTTLE

Flask shape. Smoked topaz of a clear, rich and deep soft brown with mirror surface. Green jade stopper.

63 MOSS AGATE SNUFF BOTTLE

Bulbous flask shape. Translucent agate with fine markings as of imprisoned mosses of red, brown and green tones. Animalistic mask-and-ring handles carved at the shoulders. Stopper of pink crystal on gold ring. Fine piece.

64 AMETHYST SNUFF BOTTLE

Graceful flask shape. Amethyst of rich typical tone with relief carving of lotus flowers. Stopper also of amethyst.

65 TWIN SNUFF BOTTLE

Carved ivory, representing the twin Genii of Mirth and Harmony, holding a lotus leaf with which to fan off troubles.



- 66 BRASS SNUFF BOTTLE  
 Bottle shaped, with engraved decorations. On one side two warriors in motion, on the other a third one saying good-bye to a lady. On the narrow sides are Chinese inscriptions Green jade stopper. Very old piece.
- 67 PORCELAIN SNUFF BOTTLE  
 Inverted pear shape. White porcelain with decoration in coral red glaze of five clawed dragon playing with the flamed pearl.
- 68 MOTHER-OF-PEARL BOTTLE  
 Two thin shells of mother-of-pearl joined by a band of gilt silver. The neck is of silver and the shoulder ornament is decorated with blue enamel.
- 69 PORCELAIN SNUFF BOTTLE  
 Coral glazed porcelain. Double body, the outer casing decorated in relief and pierced with design of nine lion cubs among clouds playing with brocaded balls.
- 70 IVORY SNUFF BOTTLE  
 Very large size. Ivory carved in bold design with phoenix and two magpies amongst foliage. On top two dragons. Stopper also carved with dragon design. Unusual piece.  
 [SEE ILLUSTRATION ON PAGE 13]
- 71 POTTERY SNUFF BOTTLE  
 Tea-dust colored pottery in jar form.
- 72 GLASS SNUFF BOTTLE  
 Canton glass bottle, painted on the inside. On the obverse is a landscape with two men, crossing a bridge, on the reverse a still-life with a vase and a flower pot with plants. Ivory stopper.
- 73 PORCELAIN SNUFF BOTTLE K'ANG-HSI  
 Blue and white porcelain (hard paste) in cone form. The blue is of richest tone. The design represents seven sea monsters, roaming amidst waves. Exceptional piece.

74 AMBER SNUFF BOTTLE

Yellow Baltic amber, in natural pebble form, suggesting the appearance of a plum. The stopper of green jade forms the stem of the fruit.

75 FEI-TSUI JADE SNUFF BOTTLE

Flattened ovoidal form. Fei-t'sui jade with bands of rich emerald green running around the bottle. On one side is carved a landscape scenery and on the other rocks and flowers. Stopper of Fei-t'sui jade on silver ring. Unusual piece.

[SEE ILLUSTRATION ON PAGE 13]

76 PORCELAIN SNUFF BOTTLE

K'ANG-SHI

Club shaped. Porcelain of Imperial yellow glaze. On one side is carved in relief a peony tree and on the other a branch of chrysanthemums. Amethyst stopper.

77 AGATE SNUFF BOTTLE

Translucent grayish agate, carved on one side with two figures under a pine tree, on the other side with a figure and three lion cubs, one of which is carved in a red strata, while the other carvings are done in the black layer. Very good carving.

78 WOOD SNUFF BOTTLE

Conventional shape, carved of the dark wood of the Chinese palm tree, showing the grain of the wood. Green jade stopper.

79 AGATE SNUFF BOTTLE

Pale brown agate with unusual markings of gray and white. Carved lateral tiger head handles. Rare specimen.

80 JADE SNUFF BOTTLE

Black jade with injection of white strata. On one side is the carving of a crane in a lotus pond, on the other two figures under a pine tree.

81 AGATE SNUFF BOTTLE

Brownish, semi-translucent agate carved in shape of a Chinese date. Out of another layer three peanuts are chiselled. Turquoise stopper forms stem of fruit. Unique piece.

- 82 **PORCELAIN SNUFF BOTTLE**  
 Flattened ovoidal shape. Porcelain of metallic black ground, wrought with network of conventional flower design in green. Ch'ien-lung mark on bottom. Rare piece.
- 83 **AGATE SNUFF BOTTLE**  
 Small oval form. Brownish agate with gray markings. Stopper to match.
- 84 **PORCELAIN SNUFF BOTTLE**  
 Creamy white porcelain of soft paste with fine crackle. The bottle itself is in the inside, the outer case pierced and carved in relief with the eight Buddhist emblems of happy augury. Very fine piece in perfect condition.  
 [SEE ILLUSTRATION ON PAGE 13]
- 85 **PORCELAIN SNUFF BOTTLE**  
 Small, heart shape. Famille-verte porcelain. Green border, having two white panels. On one side is painted in enamel colors a flower and leaves, on the other a Chinese poem.
- 86 **PORCELAIN SNUFF BOTTLE** YUNG CHÊNG  
 Rounded flask shape. Porcelain covered with a clair-de-Lune glaze on which, on each side, the figures of three Taoist sages under a pine tree are drawn in sapphire blue. Yung Chêng mark on bottom. Very unusual piece.
- 87 **PORCELAIN SNUFF BOTTLE** YUNG CHÊNG  
 Ovoidal flask shape. White biscuit porcelain with patches of emerald green to imitate fei-'tsui jade. On the obverse a branch of the prunus tree with blossoms is elaborately carved in high relief. Fei-tsui stopper. A remarkable specimen.  
 [SEE ILLUSTRATION ON PAGE 13]
- 88 **POTTERY SNUFF BOTTLE**  
 Ovoidal shape. Terra cotta with two incised panels, which are decorated with landscapes, in enamel colors. Ch'ien-lung mark on botton.
- 89 **MOSS AGATE SNUFF BOTTLE**  
 Purplish agate, with imprisoned green mosses.

- 90 JADE SNUFF BOTTLE  
"Sun spot jade." White jade with a dense marking in brownish red on one side. When held against light, the color suggests the fire of the sun setting behind clouds. The stone is of considerable age and very scarce. Green jade stopper.
- 91 CRYSTAL SNUFF BOTTLE  
Smoked crystal of a deep brownish black color with bright polish. On one side is carved a branch of the plum tree, on the other two butterflies. Green jade stopper.
- 92 GLASS SNUFF BOTTLE  
Black colored opaque glass overstrewn with gold speckles. Gourd shape. Stopper to match.
- 93 HAIR CRYSTAL BOTTLE  
Large size flask shape with carved rudimentary handles. Hair crystal penetrated by a multitude of hair like dark crystals, giving it an almost black color.
- 94 GLASS SNUFF BOTTLE  
Milky, opalescent glass, imitating jade. Inverted pear shape, carved in wicker ware basket pattern. Coral stopper.
- 95 MOSS AGATE SNUFF BOTTLE  
Flattened flask shape, with carved animalistic mask-and-ring handles. Grayish translucent agate, with fine markings as of imprisoned mosses, in a green almost of malachite quality. Stopper of carnelian.
- 96 AMBER SNUFF BOTTLE  
Oval shape. Clear amber, of honey color. Amber stopper.
- 97 JADE SNUFF BOTTLE  
Yellow jade of soft, uniform color. A strata of brownish tone is carved into the figure of Taoist immortal Li Tieh Kwai, carrying a stick to which a gourd is tied. A deer and bat, emblems of happiness and good income complete the exquisitely carved scene.
- 98 AGATE SNUFF BOTTLE  
Urn shape. Clear, grayish agate with carved tiger-head handles, at the shoulders.

99 AQUAMARINE SNUFF BOTTLE

Aquamarine of light green color, front and back are left plain, and brilliantly polished, the two narrow sides show carving. One side shows a crouching lion, on the other a decoration of flowers and leaves. Pink tourmaline stopper. Beautiful specimen of this rare stone.

100 MOTHER-OF-PEARL SNUFF BOTTLE

Slender flask shape. Mother-of-pearl with brilliant lustre. Stopper of same material.

**A COLLECTION OF OLD CHINESE GLASS**

**Lots 101—118**

- 101 CHINESE GLASS VASE YUNG CHÊNG  
Octagonal bottle shape, soft green opaque glass. Height, 6 inches.
- 102 OLD GLASS BOTTLE  
Bottle shape, transparent deep blue glass. Height, 8 inches.
- 103 GLASS VASE CH'IEN-LUNG  
Bottle shape, opaque glaze of turquoise blue. Height, 7½ inches.
- 104 GLASS VASE CH'IEN-LUNG  
Bottle shape, transparent glass of deep green. Height, 8 inches.
- 105 GLASS VASE CH'IEN-LUNG  
Bottle shape, sapphire blue transparent glass. Height, 8 inches.
- 106 GLASS VASE CH'IEN-LUNG  
Bottle shape, transparent amber glass. Height, 8 inches.

- 107 GLASS VASE CH' IEN-LUNG  
Bottle shape, transparent amber glass. Height, 8 inches.
- 108 GLASS BOTTLE  
Bottle shape, transparent sapphire blue. Height, 11 inches.
- 109 GLASS VASE CH' IEN-LUNG  
Round bottle shape, transparent sapphire blue glass. Height, 8½ inches.
- 110 PAIR ANTIQUE GLASS VASES  
A pair of bottle shaped vases, salmon pink opaque glaze of fine quality. Height, 11¼ inches.
- 111 SMALL GLASS BOTTLE  
Pilgrim bottle shape cameo glass, dragon and tiger carved in blue on white glass. Height, 4 inches.
- 112 OLD GLASS BOWL  
Floral shape, turquoise blue glass. Height, 2¾ inches.
- 113 OLD GLASS BOWL  
Transparent amber colored glass. Diameter, 4 inches.
- 114 GLASS JAR CH' IEN-LUNG  
Jar shape, supported by three short legs, transparent ruby red glass. Diameter, 5½ inches.
- 115 OPAQUE GLASS BOWL CH' IEN-LUNG  
Glass in varied tones of reddish-brown with lighter markings and veins in imitation of jasper agate. Teakwood stand. Diameter, 4½ inches.  
*Formerly in the collection of Thomas E. Waggaman.*
- 116 OLD GLASS VASE  
Spillform with a flaring neck, shaded pink of opaque glass. Height, 13¼ inches.
- 117 ANTIQUE GLASS VASE  
Amphora with flaring neck opaque glass of terra cotta color. Height, 12 inches.



118 CAMEO CUT GLASS VASE

Pilgrim bottle shape with foot and two handles on the neck. The decoration of flowers, birds and dragons is deeply carved in cameo style in rich dark blue on opaque white ground. Square mark incised in white. Teakwood stand. Height, 9 inches.

**A COLLECTION OF TEA POTS AND CUPS AND SAUCERS**

**Lots 119—128**

119 FAMILLE-VERTE TEAPOT

K'ANG-HSI

Square shape with large handle and spout. Original cover. "Hundred antiques" and floral decoration in five colors. Teakwood stand. Height, 5 inches.

120 CORAL GLAZE TEAPOT

CH'IEN-LUNG

White porcelain covered with a rich uniform coral glaze decorated with butterflies and flowers in gold. The high handle is also of porcelain and decorated in different colors, while the spout, in shape of an elephant's head, is in coral red and white. Original cover. Teakwood stand. Height, 6 inches.

- 121 MIRROR BLACK TEAPOT CH' IEN-LUNG  
 Small teapot with handle, spout and original cover, invested with a rich mirror black glaze with gold tracery and decorated with peaches and blossoms, in soft rose color. Teakwood stand. Height,  $3\frac{3}{4}$  inches.
- 122 DECORATED TEAPOT CH' IEN-LUNG  
 On a ground of honeycomb pattern of blue and white are butterflies and sprays of flowers in white, modelled in low relief. Two large panels showing the clear ivory-white tint of the porcelain are decorated with flowers in famille rose colors. Original cover decorated in same style. Teakwood stand. Height,  $4\frac{1}{4}$  inches.
- 123 EGG SHELL CUP AND SAUCER YUNG CHÊNG  
 Delicate porcelain covered with an even canary yellow glaze. Six character Yung Chêng Mark on cup and saucer. Stand. Height, 2 inches.
- 124 FIVE-COLOR TEA CADDY K' ANG-HSI  
 Square shape decorated with fighting cocks on the two larger sides and with flowers on the two other sides and on top, in famille verte. Teakwood stand. Height, 3 inches.
- 125 DECORATED CUP AND SAUCER CH' IEN-LUNG  
 White porcelain of fine texture, decorated in famille rose colors with gold. The central band of the cup and the border of the saucer have a leaf design pierced in the porcelain.
- 126 DECORATED CUP AND SAUCER YUNG CHÊNG  
 An openwork basket pattern is carved on both cup and saucer, over a dark glaze on the inside. Decorated with flowers and medallions in famille rose and gold. Unusual piece.
- 127 SET OF THREE EGG SHELL CUPS AND SAUCERS YUNG CHÊNG  
 At bottom of each a medallion with figure, and around this on the saucer and on the exterior of the cup, white reserve panels of polyfoil outline with famille rose decoration, the reserves in a gold ground, pencilled in coral with a floral scroll. (One saucer repaired with gold lacquer.)





127A EGG SHELL CUP AND SAUCER CH' IEN-LUNG

Covered with Rose-du-Barry glaze and decorated with butterflies executed with greatest skill in enamel colors. Inside cup and in center of saucer a sprig of flowers. Stand. Described and illustrated in Du Sartel's "La Porcelaine de Chine." *Formerly in Wales Collection.*

128 SET OF FIVE IMPERIAL CUPS AND SAUCERS

CH' IEN-LUNG

Magnificently decorated pieces. The cups are on the outside covered with a warm hue of pinkish yellow which is decorated with scroll design pencilled in gold and with floral design in rich enamel colors. Inside of cup is entirely of heavy gilding. The saucers are decorated to match. The center, hollowed out to hold the cup, shows the shou mark in gold. Back of saucer is also covered with the ground color and decorated with five bats in gold. Every detail, like the flowers, the gilding, etc., is done with greatest care and the porcelain is of fine texture. Square mark on cups and saucers.

## A COLLECTION OF PORCELAIN BOWLS

### Lots 129—154

- 129 BLACK AND GREEN TEA BOWL CH' IEN-LUNG  
The outside decoration consists of a design of leaves and flowers, in green and covered entirely with a lustrous black glaze. The inside is of white. Square Ch'ien-lung mark. Teakwood stand. Height, 2 inches; diameter,  $3\frac{1}{4}$  inches.
- 130 IMPORTANT TEMMOKU BOWL SUNG  
Lustrous brown and blue rabbit-hair glaze, silver rim. Diameter,  $4\frac{1}{2}$  inches.
- 131 TEMMOKU BOWL SUNG  
Covered with a bluish-black rabbit-hair glaze. Diameter, 5 inches.
- 132 NEST OF TEN BOWLS CH' IEN-LUNG  
Ten bowls, the largest  $4\frac{3}{8}$  inches in diameter and  $2\frac{1}{8}$  inches high, the smallest  $1\frac{7}{8}$  inches in diameter and  $\frac{1}{2}$  inch high, one fitting into the other, forming a perfect set. The outside of the bowls is covered with a pistache green colored glaze on which are etched scroll patterns and a decoration of flowers, executed in a famille-rose. This flower decoration is different on each bowl. Teakwood stand.
- 133 DECORATED EGG SHELL BOWL AND COVER CH' IEN-LUNG  
Finest egg shell porcelain decorated with flowered crest forms in different designs and rich enamel colors. In the interior delicately rendered buds in white enamel over the glazed body. Bears mark: "Made for the Lord of the Bamboos." Diameter,  $4\frac{1}{2}$  inches. *Formerly in the General Brayton Ives Collection.*
- 134 FIVE COLOR RICE BOWL AND COVER CHIA CH'ING  
Bowl and cover are decorated with two Ho-Ho birds in rich plumage and two full faced dragons. A floral band interrupted by shou marks finishes the decoration which is painted in rich enamel colors. Inside of bowl and cover is a peach, a flower and a bat. Square Chia Ch'ing Mark. A good specimen of the period. Teakwood stand. Diameter,  $4\frac{3}{4}$  inches.

- 135 PIERCED RICE BOWL AND COVER CH' IEN-LUNG  
On a pale blue body is the design of a magnolia tree in blossom and other flowers, in colors and gold. The porcelain has been pierced in places and filled in with glaze so that the petals of some of the flowers appear transparent when held up to the light. Cover has same decoration. Teakwood stand. Seal mark of the Ch'ien-lung period. Diameter,  $4\frac{1}{2}$  inches.

- 136 IMPERIAL RICE BOWL CH' IEN-LUNG  
White semi-egg shell porcelain of fine texture covered with rich yellow glaze and decorated in rouge-de-fer with five fighting five-clawed dragons. Wave design around lower part. Square mark of the reign. Teakwood stand. Height,  $2\frac{1}{4}$  inches; diameter,  $4\frac{3}{4}$  inches.



- 137 IMPERIAL RICE BOWL CH' IEN-LUNG  
The outside is covered with a rich yellow glaze on which is an all over design of various flowers, delicately and artistically drawn in beautiful coloring. The inside of the bowl is left white, with five flying bats in rouge-de-fer. At bottom is the square Ch'ien-lung mark in blue. Teakwood stand. Height,  $2\frac{1}{2}$  inches; diameter,  $5\frac{3}{4}$  inches.

- 138 DECORATED BOWL CH' IEN-LUNG  
Covered with coral red glaze and decorated in enamel colors with the eight buddhistic emblems and lotus flower motive. Inside and base turquoise blue enamel glaze. Red Hall mark. Teakwood stand. Diameter,  $6\frac{3}{4}$  inches.

## 139 DECORATED BOWL

K'ANG-HSI

The clear white porcelain is incised with a design of clouds and the sacred ball, after which two five-clawed dragons are chasing which are also incised and covered with a rich green glaze. The center of inside shows also dragon decoration in green on white. Teakwood stand. Diameter,  $7\frac{1}{4}$  inches.



## 140 GRAVIATA MEDALLION BOWL IMPERIAL TAO KUANG

On an etched ground of crimson (rouge d'or) are floral decorations in enamel colors. Four medallions in white reserve are decorated in enamel colors and gold with vases and other utensils. Inside of bowl are conventional designs executed in two shades of blue. Mark: Tao Kuang. This bowl is illustrated and described by Monkhouse (Plate No. 45). Teakwood stand. Diameter,  $5\frac{7}{8}$  inches.

## 141 BEAUTIFULLY DECORATED BOWL CH'IEN-LUNG

Graceful shape, widening towards mouth with scalloped edge. The outside is covered with a deep coral glaze on which is a decoration of rocks, flowers and birds, executed in rich enamel colors and with minute care, in Ko yüan hsiang style. The inside is covered with a clear turquoise glaze. An Imperial piece. Square Hall mark, in red. Teakwood stand. Diameter, 7 inches.

- 142 IMPERIAL YELLOW BOWL K'ANG-HSI  
Graceful flaring form, covered with a rich yellow glaze. Dragons reaching for the sacred ball are incised on the inside and outside of the bowl. Ming Mark under the foot. Teakwood stand. Diameter, 7 inches.
- 143 BLUE AND WHITE BOWL YUNG CH'ENG  
Clear white porcelain decorated with a conventional floral design, in rich cobalt blue. Part of the flowers are brought out in relief. In center of bowl is a repetition of the design. Mark: Ch'eng Hua. (Slightly cracked.) Teakwood stand. Diameter,  $6\frac{1}{4}$  inches.
- 144 IMPERIAL FAMILLE-VERTE BOWL YUNG CH'ENG  
Graceful flaring form. The creamy white porcelain is of purest texture and beautifully decorated in subdued enamel colors, with birds, rocks, flowers and butterflies. Six character Yung Ch'eng Mark in blue double ring. Teakwood stand. A remarkable specimen of the Imperial Yung Ch'eng Kilns. Diameter,  $6\frac{1}{2}$  inches.  
[SEE ILLUSTRATION]
- 145 BLUE AND WHITE BOWL K'ANG-HSI  
Deep shape with flaring lip. On a ground of rich sapphire blue are two dragons among clouds, playing with the sacred pearl. The inside is decorated with a blue and white hawthorn border and the center with the motive of the carp swimming up stream. Mark: Four swastikas in double ring. Teakwood stand. A bowl of rare quality. Diameter,  $7\frac{3}{4}$  inches.
- 146 SEMI-EGG SHELL BOWL K'ANG-HSI  
Deep shape with flaring edge. The outside is decorated in famille-verte with four Do Foo Lions, playing with the brocaded ball. Inside of edge a lozenge design, also in five colors, interrupted by four panels which are decorated with sacred animals. In center of bowl a spray of flowers. Hall Mark. Slight repairing. Teakwood stand. The decoration of this bowl is very rare. Diameter,  $7\frac{1}{2}$  inches.  
[SEE ILLUSTRATION]



144



146



- 147 IMPORTANT FAMILLE-VERTE BOWL K'ANG-HSI  
 Deep, graceful shape delicately decorated in famille-verte colorings, with guelder roses, hawthorn blossoms, rocks and foliage. At the back are two flying birds. Border consists of a green band with white hawthorn. Inside the lip and at bottom are sprays of various flowers. The mark, evidently two dragons, is very rare and not given in any of the reference books. Teakwood stand. Unusually fine specimen. Diameter,  $6\frac{1}{4}$  inches.

[SEE ILLUSTRATION]

- 148 FAMILLE-VERTE BOWL K'ANG-HSI  
Deep hexagonal shape with flaring mouth. Each of the eight sides is decorated with flowers of various kinds in rich famille-verte colors on clear white hard-paste porcelain. Inside of bowl sprays of flowers. Hall mark in blue double ring. Teakwood stand. Very fine piece. Diameter, 8 inches.

[SEE ILLUSTRATION]

- 149 FAMILLE-VERTE BOWL K'ANG-HSI  
Hexagonal shape. Each of the eight panels is decorated with a subject of Chinese mythology, in rich enamel colors. Inside lip decorated with brocaded band and eight buddhistic emblems, the center with the figure of a Chinese sage, also in famille-verte. Teakwood stand. Ch'èng-Hua mark. The decoration of this bowl is very unusual and interesting. Diameter,  $8\frac{1}{4}$  inches.

[SEE ILLUSTRATION]

- 150 IMPORTANT THREE-COLOR BISCUIT BOWL K'ANG-HSI  
Bell shape. The white biscuit body is covered entirely with yellow glaze, only the base being left white. On the outside is a decoration of figures and landscape in bold design executed in green and aubergine. At bottom of inside is a fungus in same colors. Square hall mark in double ring. Teakwood stand. Very rare specimen. Diameter,  $7\frac{1}{2}$  inches.

[SEE ILLUSTRATION]

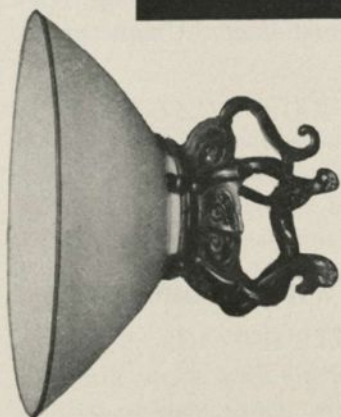
- 151 WHITE EGG SHELL BOWL K'ANG-HSI  
Deep shape with narrow foot. Very white porcelain, fitted with a metal rim, with incised decoration of two Ho-Ho birds amidst a scroll work of fungus. Outside perfectly plain. The bowl has a bell-like clear "ring", typical of this ware. Diameter, 9 inches.

[SEE ILLUSTRATION]

- 152 SANG-DE-BOEUF BOWL K'ANG-HSI  
Both inside and outside of bowl covered with a rich deep sang-de-boeuf glaze. Bottom rice color, crackled. Teakwood stand. Diameter,  $6\frac{1}{2}$  inches.



149



151



148



150



- 153 PAIR OF DECORATED BOWLS MING  
Deep shape, decorated in blue, green and red with a design representing a lotus pond with mandarin ducks and various water plants. Inside of bowl a circular panel with blue dragon on rouge-de-fer ground. Teakwood stand. Diameter, 9 inches.

- 154 PAIR PRESENTATION BOWLS WITH COVER YUNG CH'ENG  
Sides recurving and flaring from a bold foot; covers broad bell shape with cylindrical handle. All rims indicated as hexafoil by small incisions. Decoration, imperial dragons and the omnipotent jewel among clouds above the sea, executed in rouge-de-fer and two tones of underglaze blue, and polychrome enamels. On each piece the six-character mark of the reign within a blue double-ring. Teakwood stand. Unique pieces. Diameter, 7 $\frac{7}{8}$  inches.

## A COLLECTION OF BLUE AND WHITE PORCELAINS

### Lots 155—177

- 155 BLUE AND WHITE BARREL K'ANG-HSI  
A small barrel, with blue aster decoration on white ground, with European silver mounting. Teakwood stand. Unusual shape. Length, 5 inches.
- 156 BLUE AND WHITE SOFT PASTE VASE CH' IEN-LUNG  
Graceful pear shape. Creamish white soft paste porcelain decorated in blue, with floral designs and conventional bands. Slightly repaired at lip. Teakwood stand. Height, 6 inches.
- 157 BLUE AND WHITE VASE CH' IEN-LUNG  
Inverted pear shape. Decoration of pomegranates and peaches between conventional borders, in deep blue on semi-soft paste porcelain. Teakwood stand. Height, 8 inches.

158 BLUE AND WHITE ROSE WATER SPRINKLER

YUNG CHÊNG

White porcelain decorated in deep blue with designs of flowers. Teakwood stand. Height, 6½ inches.

159 BLUE AND WHITE VASE

K'ANG-HSI

Globular body with trumpet neck. Clear white porcelain decorated with cobalt blue of different shades. In six panels in slight relief are "Long Elizas" and floral decoration while around the neck are sprays of flowers. Mark: A leaf. Teakwood stand. Height, 6½ inches.

160 BLUE AND WHITE VASE

K'ANG-HSI

Small club shape decorated in cobalt blue with "Hundred Antiques" design. Teakwood stand. Height, 8 inches.

161 BLUE AND WHITE VASE

MING

Small Beaker shape with bulging shoulder and narrow neck on which are two loophandles. The decoration consists of floral and geometrical bands and leaf designs, all executed in deep Mohammedan blue. Six character Wan-Li mark in double ring. Teakwood stand. Height 7½ inches.

162 BLUE AND WHITE VASE

K'ANG-HSI

Bottle shape with slightly flaring neck. The decoration consists of eight panels with landscapes, flowers and emblems, in cobalt blue on white hard paste ground. Cheng-Hwa mark. Teakwood stand. Height, 10 inches.

163 BLUE AND WHITE JAR

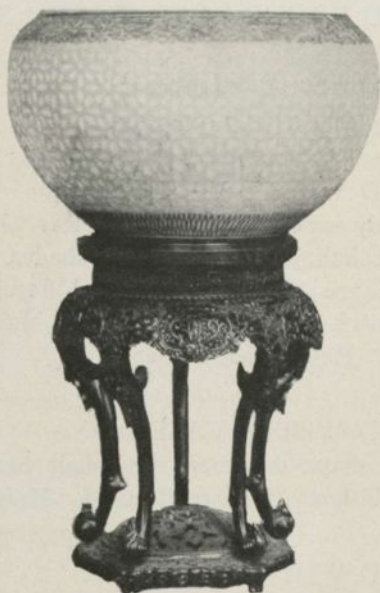
K'ANG-HSI

Conical-shape. Decorated in richly shades, blue at top and bottom with Vandyke pattern of blue with flowers in white reserve. In the center are four panels with flowers and emblems. Teakwood cover and stand. Height, 9 inches.

164 BLUE AND WHITE VASE

K'ANG-HSI

Pear shape. Clear white porcelain, decorated in fine silver blue, with the "hundred antiques." Conventionalized border around body of vase and sprays of flowers at neck. Very fine specimen. Teakwood stand. Height, 6 inches.



165 LARGE "RICE-GRAIN" BOWL CH' IEN-LUNG

Round, bulbous body with wide mouth. At foot and mouth are narrow blue bands of formal design while the body shows a star design pierced through the porcelain and filled in with a translucent glaze; so-called "rice-grains" pattern. Beautifully carved, high teakwood stand. Height,  $4\frac{1}{2}$  inches; Diameter,  $7\frac{1}{2}$  inches.

166 BLUE AND WHITE HAWTHORN GINGER JAR

K'ANG-HSI

On a background of fine cobalt blue resembling cracking ice are blossoms of white hawthorn and six various shaped panels containing sprays of flowers in rich blue on white ground. Mark: Blue double ring. Stand and old carved teakwood cover. Fine specimen. Height, 9 inches.

167 PAIR OF BLUE AND WHITE BEAKERS

CH' IEN-LUNG

Beaker shape with oviform body, decorated with landscape designs in blue on white ground. Teakwood stands. Height, 11 inches.



168 RARE BLUE AND WHITE VASE CH' IEN-LUNG

Large cylindrical shape with narrowing neck and spreading mouth. Two five-clawed lion cubs are playing with the brocade ball. On back are three bats. The bold design is in deep sapphire blue and applied by lines and stippling on white ground. Specimens of this type are very rare. Teakwood stand. Height, 16 inches.

169 BLUE AND WHITE HAWTHORNE GINGER JAR K' ANG-HSI

Gracefully rounded form. Bunches of flowers of white hawthorn are strewn over a richly shaded background of cobalt blue, representing cracking ice. Teakwood stand and cover. Height, 5¼ inches.



170 PAIR IMPORTANT BLUE HAWTHORN JARS

K'ANG-HSI

Graceful ovoid ginger jars with small apertured neck. The paste is of pure white quality covered with a brilliant cobalt blue of unusual richness. The depth of the ground is enhanced by careful mottling and crossed reticulations, giving the effect of cracking ice. White blossoms of prunus are scattered over the ground, while three white reserves in quadrifoil form are decorated with Kylin. At neck and foot are narrow dented borders. Teakwood stands and jade inlaid covers. These two jars are judged by experts to be among the finest of their kind. Height, 9 inches.



- 171 POWDER BLUE JAR AND COVER K'ANG-HSI  
Large Ginger Jar covered with powder-blue glaze relieved by three white panels in which are landscape designs, also in blue. Original porcelain cover with similar decoration. Teakwood stand. Height, 9½ inches.
- 172 TEMPLE JAR AND COVER YUNG CHÊNG  
Chrysanthemums and foliage in raised blue enamel on a white ground. Teakwood stand. Height, 18½ inches.
- 173 BLUE AND WHITE VASE CH'IEN-LUNG  
Cylindrical lantern shape, decorated in rich blue with design of sacred animals. The decoration is applied by stippling of the blue on a creamy white ground. Teakwood stand. Height, 15 inches.
- 174 BLUE AND WHITE HAWTHORN JAR K'ANG-HSI  
White Hawthorn branches and blossoms, ascending and descending, on a richly mottled ground of fine sapphire blue. Ground rim. Slight crack. Dome shaped teakwood cover and stand. Very fine specimen. Height, 8½ inches.



- 175 IMPORTANT BLUE AND WHITE VASE K'ANG-HSI  
 Tall cylindrical shape, narrowing toward foot. Decorated in blue with fine distinct bands of alternating flower and dragon design. Some of the bands are decorated in reserve, leaving the design white on blue ground. Very unusual piece. Teakwood stand. Height, 21 inches.
- 176 TALL BREAKER VASE MING  
 Blue and white tall round form with bulbous center, spreading base and high flaring neck. Dragon and cloud painted under the glaze. Elephants heads handles. Wan-li seal mark below the lip. Slight repair at lip. Height, 29 $\frac{3}{4}$  inches.
- 177 LARGE PALACE JAR K'ANG-HSI  
 All over decoration of chrysanthemum design in blue on white ground, bordered by blue and white hawthorn bands. Original cover decorated in same style. Teakwood stand. Height, 26 inches.

## SECOND SESSION

Friday Afternoon, February 18, 1921, at 2:30 o'clock

Lots 178—367

### A COLLECTION OF CHINESE SNUFF BOTTLES

Lots 368—467

178 HORN SNUFF BOTTLE

Yellowish-brownish and semi-transparent horn, in shape of pilgrims bottle with movable ring handles and stopper of ivory. The bottle is decorated on both sides with a flower still-life painted on the inside. Very unusual piece.

179 PORCELAIN SNUFF BOTTLE

Blue and white soft paste. Short, cylindrical shape. The design shows a number of Chinese boys at play. Stopper: Blue glass on silver ring. Mark of the reign of Yung Chêng.

180 BRONZE SNUFF BOTTLE

Pilgrim bottle shape with well defined foot. The decoration consists of raised circular panels on each side, surrounded by a band of elephants' heads is another panel showing conventional flower designs. The lateral sides have lion head handles.

181 JADE SNUFF BOTTLE

Yellow jade of mellow tone, with carved decoration of a plum tree, a deer, and a flying bird on one side, and a lotus plant, on the other.

182 TOPAZ SNUFF BOTTLE

Flattened flask shape. Clear smoked topaz, highly polished.



- 183 ROCK-CRYSTAL SNUFF BOTTLE  
Elongated hexagonal shape carved of white rock crystal.
- 184 AGATE SNUFF BOTTLE  
Translucent brownish agate, with a fine white line running through the center. Brilliantly polished with carved rudimental handles.
- 185 ROCK CRYSTAL SNUFF BOTTLE  
Bulbous flask shape. Smoky rock crystal, carved in low relief, on both sides, with figure and landscape.
- 186 AGATE SNUFF BOTTLE  
Translucent yellowish agate with carving in relief of a pine tree, under which is a deer standing, while a magpie is sitting on the tree. Another marking has been utilized for carving of a monkey. Fei-'tsui jade stopper.
- 187 GLASS SNUFF BOTTLE  
Glass carved in cameo style. On a pink ground are flower decorations in yellow. On one side the prunus, on the other the peony. Also the lateral animal handles are carved in the yellow layer.
- 188 AMBER SNUFF BOTTLE  
Chinese Rock amber, carved as the fruit of the Buddha's hand citron. Stopper, also of amber, forms stem of fruit.
- 189 JADE SNUFF BOTTLE  
Dark brownish jade with lighter veinings, highly polished. So-called "Tombstone" jade. Stopper of green jade.
- 190 JADE SNUFF BOTTLE  
Very large size. White jade, elaborately carved in relief. On one side a temple with a lady ascending, on the other a landscape with two warriors. Stopper, also of jade, shows four deer, under a tree, carved in undercutting.
- 191 AMBER SNUFF BOTTLE  
Small urn shape with carved animalistic ring handles. Mottled rich, translucent, golden amber, of sparkling quality, brightly polished.

- 192 GLASS SNUFF BOTTLE  
 Bottle shape with slender neck. Mottled opaque glass, in yellow and red, with carving of a conventional lotus flower on front and back, and lateral ring handles.
- 193 JASPER SNUFF BOTTLE  
 Flattened oval shape. Jasper in olive green hue with red markings. A stone of beautiful colorings.
- 194 AGATE SNUFF BOTTLE  
 Square shape. Gray agate with fine veining. Stopper of same stone. Unusual piece.
- 195 AGATE SNUFF BOTTLE  
 Yellow agate with figures carved of a darker layer. The scene represents a sage on a unicorn, talking to a beggar. Fei-'tsui jade stopper.
- 196 BRONZE SNUFF BOTTLE  
 Graceful shape with oval panels. Inlaid in silver with conventional designs. A beautiful piece.
- 197 PORCELAIN SNUFF BOTTLE  
 Inverted pear shape, flattened; decorated in high relief with a shell floating on waves, lotuses blooming in a pond, and swallows and dragon flies hovering over them. The reliefs partly in white and partly in polychrome on a pure white ground.
- 198 JADE SNUFF BOTTLE  
 Flattened flask shape with low foot; grayish white jade with brilliant polish, and with two handles running the full length of the sides, carved in the form of lizard-dragons, one ascending, the other one descending. Green jade stopper.
- 199 PORCELAIN SNUFF BOTTLE  
 Inverted pear shape. White porcelain carved with the figures of the eighteen Arhat, on a pierced ground, representing clouds. Green glass stopper.
- 200 AMBER SNUFF BOTTLE  
 Irregular shape, carved in relief with the Buddha's hand citron, mottled rich brown and golden translucent amber, with brilliant polish. Stopper of amber, forms stem of fruit.

- 201 AMBER SNUFF BOTTLE  
Opaque brown amber, carved in irregular jar shape, with bamboo and prunus motives in relief.
- 202 PORCELAIN SNUFF BOTTLE  
Mottled green, with carving of a domestic scene on one side and an inscription on the other.
- 203 PORCELAIN SNUFF BOTTLE  
Flattened inverted pear shape with expanding lip and short foot. On a ground of incised and overlapping waves, glazed in white, figures of immortals standing on clouds, and other figures on rocks, in a boat and in the water, are modeled in relief and decorated in polychrome.
- 204 INLAID LACQUER SNUFF BOTTLE  
Black lacquer inlaid with colored mother-of-pearl. In panels on the obverse and reverse side are designs of birds amidst foliage, while the narrow sides and the stopper are in a beautiful geometrical pattern of exquisite workmanship.
- 205 CLOISONNE SNUFF BOTTLE  
Urn shape with animal heads of metal at the shoulders. Cloisonne on foundation of brass. On a white ground conventional lotus flower design in red. Original stopper.
- 206 GLASS SNUFF BOTTLE  
Rounded flask shape, opaque, mottled glass in imitation of brownish, clouded agate.
- 207 AGATE SNUFF BOTTLE  
Gray agate with black marking, brightly polished. The figures of a man and a horse are carved in an adjacent layer of yellow.
- 208 ROCK CRYSTAL SNUFF BOTTLE  
Clear rock crystal with carving of landscape. A yellow strata has been utilized for carving of a deer. Amethyst stopper.
- 209 BRASS SNUFF BOTTLE  
Flattened circular shape, with well defined foot. Brass with floral decoration in relief around bottle, inlaid with circular panels of grayish agate.

- 210 AGATE SNUFF BOTTLE  
Agate, brilliantly polished showing natural splashes of white, strata on pale brown. Stopper: Fei-'tsui jade on silver mounting. Rare specimen.
211. CLOISONNE SNUFF BOTTLE  
Inverted pear shape. Cloisonne on copper foundation, conventional lotus flower design. The bottle has evidently been in a fire but shows still the beautiful old coloring of the enamel.
- 212 TURQUOISE SNUFF BOTTLE  
Small flask shape. Old Chinese, green turquoise with black markings. Stopper: A mounted pearl. Rare piece.
- 213 JADE SNUFF BOTTLE  
Grayish white jade. The obverse and reverse side are covered with the carving of a large blossom, executed in circular, idealized shape. The sides are carved in wave design. Green jade stopper.
- 214 PORCELAIN SNUFF BOTTLE  
Gourd shape, blue ground with hawthorn blossoms in white strewn over the bottle.
- 215 ROCK CRYSTAL SNUFF BOTTLE  
Iridescent rock crystal, carved in form of sheep. Unusual piece.  
[SEE ILLUSTRATION ON PAGE 47]
- 216 QUARTZ SNUFF BOTTLE  
Quartz of yellowish pink hue; odd shape, all edges being flattened.
- 217 GLASS SNUFF BOTTLE  
Of brownish tone, interspersed with sparkling gold dots in imitation of gold stone.
- 218 GLASS SNUFF BOTTLE  
Bulbous flask shape, mottled green glass colored in imitation of Fei-'tsui jade.

- 219 LAPIS-LAZULI SNUFF BOTTLE  
Lapis-lazuli of a beautiful rich, deep blue, heavily charged with silver. The stone is rarely found in such excellent quality. Stopper: green jade mounted on silver.
- 220 JADE SNUFF BOTTLE  
Gray jade, in cylindrical form with carving of foliage.
- 221 PORCELAIN SNUFF BOTTLE  
Flattened oval shape. Porcelain painted in delicate enamel colors on white ground with a lady sitting and two boys. On the reverse a Chinese inscription.
- 222 SOAPSTONE SNUFF BOTTLE  
Of brownish color carved with designs of fabulous animals.
- 223 LACQUER SNUFF BOTTLE  
Flattened circular shape. Black lacquer, plain, highly polished. Ivory stopper.
- 224 CINNABAR LACQUER SNUFF BOTTLE  
Oval shape, tapering towards the bottom Cinnabar lacquer, carved with scenery of rocks and trees. Cover, of same material, carved with swastikas and other regular designs. Very good carving.
- 225 AGATE SNUFF BOTTLE  
Large size. Banded agate with carved rudimentary handles. Brown, gray and white markings.
- 226 GLASS SNUFF BOTTLE  
Flattened oval shape. Four panels which are bordered by red lacquer lines are painted on the inside with genre pictures.
- 227 ENAMEL SNUFF BOTTLE  
Painted enamel on foundation of copper. Floral designs in Rococo style painted alike on both sides in delicate colors on a yellow ground. Enamel paintings of this perfection are very scarce.

- 228 PORCELAIN SNUFF BOTTLE  
White porcelain with raised decoration in blue and red. The design is a conventionalized rendering of a dragon, roaming among the clouds.
- 229 PORCELAIN SNUFF BOTTLE  
Flattened ovoid shape, porcelain covered with coral red glaze.
- 230 ROCK CRYSTAL SNUFF BOTTLE  
Carved in relief with the emblems of a scholar. A strata of yellow has been utilized in the carving.
- 231 JADE SNUFF BOTTLE  
Green jade of spinach hue, carved in pattern of wicker ware basket.
- 232 AGATE SNUFF BOTTLE  
Twin bottle of unusual shape. One bottle of buff colored agate, in cylindrical form and with carving of dragon, the other dub shaped of red agate, brilliantly polished. The stopper of the same stone. Rare piece.  
[SEE ILLUSTRATION ON PAGE 47]
- 233 JADE SNUFF BOTTLE  
White jade. Flattened ovoidal form, without foot, carved in delicate relief with butterfly and vines. Stopper, a natural branch of pink coral.
- 234 CLOISONNE SNUFF BOTTLE MING  
Very large bottle. On both sides oval panels with design of rocks, pine tree and peonies in rich colors on white ground. In narrow sides bands with conventional lotus flower design on blue ground. The enamels used are of an unusual depth and freshness, typical of the Ming period.
- 235 AGATE SNUFF BOTTLE  
Black and gray agate, of unusual markings. On the front is a window-like opening of light gray among the heavy cloudings of black. Brilliantly polished and carved with lateral ring handles.

- 236 CARNELIAN SNUFF BOTTLE  
Elongated shape, tapering towards the bottom. White agate with dense markings of carnelian red. An unusual piece.
- 237 CARNELIAN SNUFF BOTTLE  
Carnelian agate of pure, rich note, brightly polished, carved in shape of a gourd, on a permanent base with four Ju-i feet. The bottle is covered with rich carving in relief of foliage and fruits, while a white strata has been carved into a lotus seed pod on which are sitting two mandarin ducks. Stopper of same stone, also carved. Beautiful piece.  
[SEE ILLUSTRATION ON PAGE 47]
- 238 JASPER SNUFF BOTTLE  
Jasper in different hues of green with carving of rocks and pine trees, while two deer are carved in a yellow strata.
- 239 STONE SNUFF BOTTLE  
"Chicken blood" stone, carved in the shape of an egg plant which is covered with leaves and insects, carved in relief. Stopper also of chicken blood stone. This stone is priced very highly by the Chinese.  
[SEE ILLUSTRATION ON PAGE 47]
- 240 ENAMEL SNUFF BOTTLE  
Cylindrical shape, of silver foundation with rich enamel coating of blue on silver tone. The design shows a composition of bats and leaves. Ming mark on bottom. Unique bottle.
- 241 WHITE PORCELAIN SNUFF BOTTLE  
Square shape. White porcelain decorated in enamel colors with personages and landscapes. Narrow sides with conventional handles and verses telling of the difficulty of having real friends and the importance of keeping them when found. On the bottom is a seal reading: Made in the Imperial Kiln for Court Use.
- 242 PORCELAIN SNUFF BOTTLE  
Flattened ovoid shape. White porcelain with double body, the outer casing pierced in design of bats, flowers and shou mark. Also the two narrow sides are pierced.



215



332



248



237



239



274



277



- 243 AMBER SNUFF BOTTLE  
Ovoid shape. Amber of rich reddish-brown tone. Original stopper.
- 244 GLASS SNUFF BOTTLE  
Green colored glass with inside paintings in delicate colors, representing genre pictures. On one side are two ladies ready to enter a boat which is attended by a boatsman, on the other side are two ladies and a Chinese dignitary in a garden.
- 245 PORCELAIN SNUFF BOTTLE  
Of purest white quality, with raised decoration, in green, of five-clawed imperial dragon playing with the flamed pearl. Fine piece.
- 246 PORCELAIN SNUFF BOTTLE  
White porcelain with painting in enamel colors of eight horses, each in different action or motion. These are the eight famed stallions of Emperor Mu Wang of the Chou dynasty, with which he was driven by his charioteer Tsao Fu on his many journeys through his empire. Amethyst stopper. Good piece.
- 247 AGATE SNUFF BOTTLE  
Square shaped; brownish agate with injections of veins in different colors. Brilliantly polished. Fei-'tsui stopper. Agate of rare coloring.
- 248 FEI-'TSUI JADE SNUFF BOTTLE  
Green, translucent jade of finest quality. Lion heads handles. Very thinly carved. This quality of jade is very rare and the bottle is a real gem.  
[SEE ILLUSTRATION ON PAGE 47]
- 249 PORCELAIN SNUFF BOTTLE  
On form of cabbage, the leaves are enameled in two hues of green on a white ground.
- 250 AGATE SNUFF BOTTLE  
Red agate with white veins. Heart shape. Fei-'tsui stopper.

- 251 AGATE SNUFF BOTTLE  
Yellowish translucent agate with darker markings, carved in flattened gourd shape. Green jade stopper. Remarkably thin carving.
- 252 LACQUER SNUFF BOTTLE  
Black lacquer in pilgrim bottle shape with loop handles at neck.
- 253 ROCK CRYSTAL SNUFF BOTTLE  
Carved in cylindrical form of an old bronze vessel. Carved ring handles.
- 254 GLASS SNUFF BOTTLE  
Glass, powdered white ground, carved in red in cameo style with designs of flowers and birds.
- 255 PORCELAIN SNUFF BOTTLE  
Cylindrical shape; porcelain, peach bloom color, with decoration of three gold fish.
- 256 CLOISONNE SNUFF BOTTLE  
Multi-colored lotus flower design on white ground. Cylindrical shape, tapering towards the foot.
- 257 AGATE SNUFF BOTTLE  
Gray agate with large areas of red, forming a pleasing contrast. Silver stopper.
- 258 GLASS SNUFF BOTTLE  
Carved in cameo style. On a milky white opaque ground designs of bamboo shoots and lotus blossoms in relief, in red, blue, green and yellow.
- 259 GLASS SNUFF BOTTLE  
Large heart shape. Mottled opaque glass with large areas of red and yellow. A bottle of beautiful coloring.
- 260 GLASS SNUFF BOTTLE  
Blood red opaque glass with lighter bands and flecks, in imitation of the glaze of Sang-de-bœuf porcelain. Unusual depth of color.

- 261 AGATE SNUFF BOTTLE  
 Ribbon agate, semi-transparent, with grayish-white zones.  
 Plain, brightly polished.
- 262 GLASS SNUFF BOTTLE  
 Glass, in imitation of mutton fat jade, carved in cameo style.  
 On one side design of a man on a rock, fishing, on the other  
 side that of a tiger in a couched position and a bird on a tree.  
 Amethyst stopper. A beautiful piece.
- 263 SILVER SNUFF BOTTLE  
 Silver, chiselled and pierced with design of nine lion cubs play-  
 ing with brocaded balls. Original stopper.
- 264 GLASS SNUFF BOTTLE  
 Opaque glass, mottled red and yellow.
- 265 PORCELAIN SNUFF BOTTLE  
 Creamy white porcelain of soft paste beautifully carved, in  
 high relief, with the figures of the eighteen Arhat, with their  
 respective emblems. A bottle of rare quality.
- 266 HAIR CRYSTAL SNUFF BOTTLE  
 Brilliantly polished crystal with a network of black hair mark-  
 ings on one side, the other side clear.
- 267 PORCELAIN SNUFF BOTTLE  
 Gourd shape. Porcelain with mirror black glaze. Coral  
 stopper.
- 268 PORCELAIN SNUFF BOTTLE  
 Flattened ovoid. Decorated with figures of the eighteen Arhat  
 in enamel colors on gilt ground.
- 269 PORCELAIN SNUFF BOTTLE  
 Coral red glazed porcelain in shape of a fruit with raised  
 decoration of a dragon in green.
- 270 AGATE SNUFF BOTTLE  
 Semi-translucent agate with jade stopper. On one side of the  
 bottle are three wild ducks, on the other side two. They are

carved in relief in the darker shades of the agate which the artist carver made use of in the most skilful manner. There are four old Chinese characters. Remarkable carving.

271 PORCELAIN SNUFF BOTTLE

Cylindrical shape, broadening at the foot. Porcelain with rich Sang-de-bœuf glaze.

272 IVORY SNUFF BOTTLE

Small flask shape, tapering towards the foot. Ivory, with original stopper of same material. On one side is the incised figure of a lady, on the other a Chinese description.

273 JADE SNUFF BOTTLE

Bulbous flask shape. Tombstone jade (Ming jade) of two colors. On a yellowish green ground, leaves and gourds are carved in relief in a dark brown strata. On the reverse are two figures standing on rocks. Unusual piece.

274 PORCELAIN SNUFF BOTTLE

YUNG CHÊNG

Slender barrel shape. White porcelain decorated with a design of the double lotus flower and formal foliage in rich Rouge-de-fer. Original stopper of white porcelain also with lotus flower in red. Very good piece.

[SEE ILLUSTRATION ON PAGE 47]

275 UNIQUE POTTERY SNUFF BOTTLE

Yi-Hsing pottery. On one side is an inscription with the characters "Ching Shan's Art Object." On the other side are two ancient ideographs in the center with commentaries alongside. On the bottom of the bottle is the seal of the owner, "Ah Yin," thus giving the bottle the double function of a snuff container and a seal. A very rare piece.

276 POTTERY SNUFF BOTTLE

Flattened jar shape, of pottery with rich blue glaze. Two handles are at neck of bottle, the sides of which are decorated with conventional flower designs and patterns in low relief.

- 277 PORCELAIN SNUFF BOTTLE YUNG CHÊNG  
Blue and white porcelain, in shape of long-necked vase, decorated in rich blue with imperial five-clawed dragon rising above the water, the background being formed by chrysanthemums. Neck decorated with conventional designs. Date mark on bottom in blue: "Made in the years of the period Yung Chêng of the Great Ts'ing Dynasty." Rare piece of unusual quality.

[SEE ILLUSTRATION ON PAGE 47]

### A COLLECTION OF MINIATURE PIECES

#### Lots 278—305

- 278 DECORATED ROUGE BOX TAO KUANG  
Five-color design of scenes of the boys' festival and flower decoration. Teakwood stand.
- 279 BLUE AND WHITE ROUGE BOX YUNG CHÊNG  
Soft paste porcelain, finely crackled. On cover is the design of an Imperial five-clawed dragon amidst clouds and playing with the sacred ball. Lower part of box has wave design. Mark: a bat. Teakwood stand.
- 280 BLUE AND WHITE ROUGE BOX K'ANG-HSI  
Imperial, five-clawed dragon among clouds, in sapphire-blue on pure white ground. Lower part of box shows wave design and Ch'eng-Hua mark in double ring. Teakwood stand.
- 281 MINIATURE TEACUP IMPERIAL CH' IEN-LUNG  
Decorated in rich enamel colors and gold with design of various flowers and scrolls on a salmon-colored ground. Inside covered with gold. Square mark on bottom. Teakwood stand.
- 282 DECORATED TEACUP CH' IEN-LUNG  
On pure white ground, incised with wave design is in rich enamel colors, the figure of an Arhat on a crab. Inside and bottom covered with a soft turquoise glaze. Hall mark in red. Beautiful specimen. Teakwood stand.

- 283 SEMI-EGGSHELL TEACUP K'ANG-HSI  
 Delicate thin porcelain of purest white texture, decorated in five-color enamels with the emblems of a Chinese scholar. Square mark in double ring. Teakwood stand. Height, 2 inches.
- 284 MINIATURE ORNAMENT TAO KUANG  
 Two Chinese boys, wrestling. Teakwood stand.
- 285 CHINESE FIGURE CH'IEN-LUNG  
 Figure of a Chinese official in biscuit porcelain with three-color decoration.
- 286 BLANC-DE-CHINE LIBATION CUP CH'IEN LUNG  
 Oval shape with wide mouth, resting on three small feet, with one handle. Chinese characters in low relief on body which is covered with a translucent creamish white glaze. Carved stand.
- 287 SOFT PASTE MINIATURE COUPE K'ANG-HSI  
 Low disk form, with relief rings round the top. Covered with a creamy-white crackled glaze. Stand and ivory cover.
- 288 MINIATURE EGGSHELL VASE YUNG CH'ENG  
 Graceful shape, small foot, bulbous body and thick neck, spreading at lip. Fine white eggshell porcelain of clearest texture. Slightly repaired with gold lacquer. Mark: Yung Ch'eng. Teakwood stand. Height, 3½ inches.
- 289 MINIATURE JAR YUNG CH'ENG  
 Oviform jar covered with tea-dust glaze. Incised seal mark. Teakwood stand and cover.
- 290 COREAN ROUGE BOX KORAI PERIOD  
 Conventional chrysanthemum design inlaid under glaze. Teakwood stand.
- 291 COREAN MINIATURE JAR KORAI PERIOD  
 Coated with dull celadon glaze.

- 292 COREAN MINIATURE JAR KORAI PERIOD  
Covered with yellow and grayish glaze.
- 293 MINIATURE JAR SUNG  
Pottery covered with black glaze with brown spots, so-called Temmoku glaze. Teakwood stand.
- 294 MINIATURE VASE SUNG  
Gourd shape, coated with gray glaze. Teakwood stand.
- 295 WRITER'S WATER DISH MING  
In shape of crab, coated with creamish-white dull glaze. Teakwood stand.
- 296 MINIATURE BOWL MING  
Tsu-Chou pottery, chocolate-brown glaze, with incised decoration of landscape and poem. Teakwood stand.
- 297 MINIATURE JAR SUNG  
Small, globular shape decorated in colors with the famous story of the white horses carrying Buddha's teachings to China. Teakwood stand. Decorated Sung pieces are very rare.
- 298 MINIATURE VASE YUAN PERIOD  
Bottle shape with long neck. Covered with clair-de-lune glaze with red splashes. Beautiful coloring. Teakwood stand.  
Height, 4 inches.
- 299 MINIATURE TEAPOT YUNG CHÊNG  
Globular shape with three small feet and high handle. Spout in shape of a camel's head. Covered with a light gray glaze with minute crackle, so-called "duck-egg" color. Handle and cover of same porcelain. Carved teakwood stand. Beautiful specimen.
- 300 MINIATURE TEMPLE JAR K'ANG-HSI  
Decorated in famille-verte colors with flowers and birds, in four panels. Teakwood stand and cover.



- 301 BLUE AND WHITE MINIATURE BOTTLE K'ANG-HSI  
 Triple gourd shape with elongated neck. The decoration, on brilliant white glaze, is executed in fine sapphire blue and consists mainly of panels with flowers in white reserve. Teakwood stand. Beautiful piece of rare quality. Height, 3 inches.  
*Formerly in the J. Pierpont Morgan Collection.*

- 302 SOFT PASTE BRUSH HOLDER K'ANG-HSI  
 Cylindrical shape. A landscape design is pencilled in two tones of cobalt blue under a finely-crackled soft-toned glaze of creamy white. Teakwood stand. Very fine specimen. Height, 5 inches.

- 303 ENAMELED PORCELAIN VASE IMPERIAL CH'IEN-LUNG  
 Short bulbous body with wide flaring neck. On a turquoise blue ground are strewn hawthorn blossoms in shaded rose color which are connected by a network of golden lines. At the neck is a conventional palm leaf design in enamel colors. Inside of vase is covered with Nile-green orange-peel surface. Base white. Teakwood stand. Height, 3¼ inches.

- 304 PAIR OF SHALLOW DISHES CH'IEN-LUNG  
 Covered with an even glaze of canary yellow. One is cracked. Square Ch'ien-lung mark. Diameter, 3½ inches.



- 305 PAIR SMALL DISHES IMPERIAL YUNG CHÊNG  
 Clear white eggshell porcelain decorated with flowers and  
 leaves, in delicate enamel colors. Six character Yung Chêng  
 mark in double ring. Diameter,  $3\frac{5}{8}$  inches.

### A COLLECTION OF SINGLE COLOR PORCELAINS

#### Lots 306—337

- 306 GALLIPOT VASE YUNG CHÊNG  
 Coated with a Rose-du-Barry glaze of even tone and fine qual-  
 ity. Teakwood stand. Height, 9 inches.
- 307 CORAL RED VASE YUNG CHÊNG  
 Bulbous bottle shape with cut neck covered with brilliant coral-  
 red glaze. Teakwood cover and stand. Excellent color speci-  
 men. Height,  $4\frac{1}{2}$  inches.
- 308 CHERRY RED MINIATURE VASE CH'ÏEN-LUNG  
 Small bottle shape covered with a rich even glaze of ripe cherry  
 color. Teakwood stand. Height,  $4\frac{3}{4}$  inches.
- 309 SMALL PORCELAIN VASE CH'ÏEN-LUNG  
 Slender bottle shape with flaring neck covered with an even  
 and beautiful clair-de-lune glaze. A coiled lizard, carved in  
 high relief, forms the decoration of the vase. Teakwood stand.  
Height, 6 inches.
- 310 CAMELLIA-LEAF GREEN VASE YUNG CHÊNG  
 Graceful pear shape with flaring neck coated with a brilliant  
 camellia-leaf green glaze of unusual depth. Minute crackle un-  
 der glaze. Teakwood stand. Height,  $5\frac{3}{4}$  inches.
- 311 WRITER'S BRUSH HOLDER K'ANG-HSI  
 Biscuit porcelain, coated with deep aubergine glaze and per-  
 forated with design of pine, bamboo and plum. Teakwood  
 stand. Height, 4 inches.

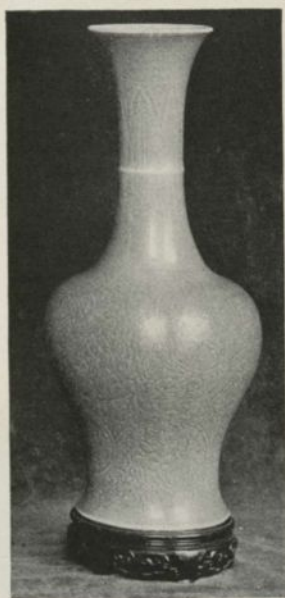
- 312 BLANC-DE-CHINE CYLINDRICAL JAR MING  
 Body decorated with swastika design, carved in relief, and with medallions of gilt figures. Floral scroll borders, pate-sur-pate at top and bottom. The porcelain is cream-white. Silver-lattice cover. Rare specimen. Teakwood stand.  
 Height, 3 inches.
- 313 WHITE SEMI-SOFT PASTE VASE CH'IEN-LUNG  
 Graceful form with short neck and expanding lip. Clear white porcelain etched under the glaze with a floral decoration between conventional bands at foot and neck. Teakwood stand.  
 Height, 5 inches.
- 314 WHITE SEMI-SOFT PASTE VASE YUNG CHÊNG  
 Graceful jar shape covered with a brilliant creamish-white glaze. The decoration, in low relief, consists of flowers, leaves and butterflies. Around the neck is a Greek fret border. Teakwood stand.  
 Height, 5 inches.
- 315 SOFT PASTE VASE CH'IEN-LUNG  
 Small bottle shape vase covered with a beautiful even glaze of creamish white with typical crackle. Fine specimen. Teakwood stand.  
 Height, 6½ inches.
- 316 BLANC-DE-CHINE VASE MING  
 Beaker shape with trumpet neck, coated with a beautiful and even glaze of ivory-white. Center band incised with floral decoration and artist's signature. Teakwood stand.  
 Height, 9 inches.
- 317 WHITE TEMPLE VASE CH'IEN-LUNG  
 Bottle shaped. Large medallions of dragons and geometrical figures etched in high relief under the white glaze. Teakwood stand.  
 Height, 21 inches.
- 318 WHITE PORCELAIN VASE YUNG CHÊNG  
 Tall square shape, with flaring neck. Four sides are perforated in varied diaper patterns. Teakwood stand. Height, 15 inches.
- 319 PORCELAIN WATER COUPE YUNG CHÊNG  
 Imperial yellow, glaze, incised medallion decoration. Teakwood stand.  
 Height, 3½ inches.



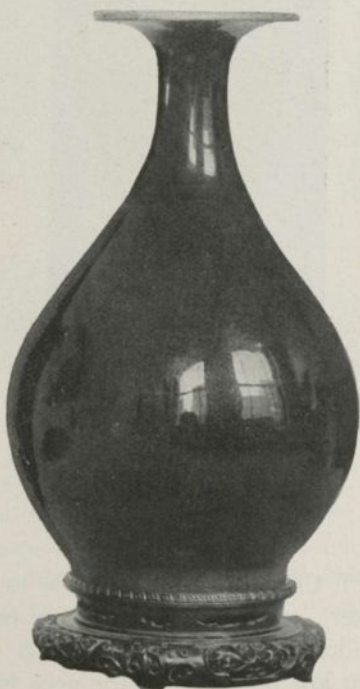
321

320

- 320 BLANC-DE-CHINE STATUE K'ANG-HSI  
 Buddha, beautifully modeled in standing position. Fuchien ware of vitreous quality covered with a brilliant white glaze. The divinity, in flowing drapery, is standing upon a lotus pedestal. Seal mark on back of figure. Teakwood stand.  
Height, 13 inches.
- 321 BLANC-DE-CHINE STATUETTE K'ANG-HSI  
 The goddess Kuan-yin seated, her right hand resting on the raised right knee, and her left elbow on an elaborately beaded arm-rest. Brilliant glaze of creamy white. Seal mark on back of figure. Wood stand carved in lotus motive.  
Height, 7 inches.
- 322 CELADON INCENSE BURNER CH'IEN-LUNG  
 Dog-Foo form. Bulbous body resting on four feet; the head forms the cover.  
Height, 14 inches.
- 323 CELADON VASE MING  
 Ovoid shape with short flaring neck, coated with sea green celadon glaze. Carved palm leaf border under the glaze. Slightly repaired with gold lacquer. Teakwood stand.  
Height, 10 inches.



- 324 IMPORTANT CELADON VASE K'ANG-HSI  
Graceful beaker shape with long narrow neck. White porcelain with celadon glaze. The lower part of the vase shows floral scrolls in low relief, while the neck has palm leaves and ju-i heads. Mark: Chia Ching in double ring. Beautiful specimen of K'ang-hsi celadon. Teakwood stand.  
Height, 16½ inches.
- 325 CELADON VASE MING  
Globular body with long neck, widening at lip. Uniformly covered a bluish-green celadon glaze, typical of Sung Period. Coiled lizards carved under the glaze at neck of bottle. Teakwood stand. Rare specimen.  
Height, 10 inches.
- 326 LARGE CELADON TEMPLE VASE CH' IEN-LUNG  
High-shouldered jar shape, covered with brilliant celadon glaze. The decoration consists of peaches, pomegranates and palm leaf design carved under the glaze. Teakwood stand.  
Height, 22 inches.



- 327 LARGE SANG-DE-BOEUF VASE CH'IEN-LUNG  
Graceful ovoid body, sloping to a thin short neck and wide-spreading lip. Covered with a brilliant, lustrous red-mottled glaze. Inside of lip delicate crackle on creamish ground. Also base cracked. Teakwood stand. Beautiful specimen.  
Height, 13 inches.

- 328 SANG-DE-BOEUF JAR K'ANG-HSI  
Globular shape covered with Lang Yao sang-de-boeuf glaze with minute crackle. Inside and base rice color, cracked. Metal rim. Teakwood cover and stand. Height, 6 inches.



329

331

330

329 SANG-DE-BOEUF BRUSH HOLDER K'ANG-HSI

Coated with richly mottled Lang-Yao sang-de-boeuf glaze on cracked ground. Teakwood stand. Very fine specimen.

Height, 6½ inches. Diameter, 7½ inches.

[SEE ILLUSTRATION]

330 IMPORTANT LANG-YAO JAR K'ANG-HSI

Globular shape. Covered with a beautiful sang-de-boeuf glaze, in rich notes of the fluid blood, with the typical clottings. Rice-colored inside and base, finely cracked. Two metal rings on each side. Slightly repaired at lip. Teakwood cover and stand.

Height, 6 inches. Diameter, 6 inches.

[SEE ILLUSTRATION]

331 LARGE LANG-YAO VASE K'ANG-HSI

Oviform shape with flaring neck. Covered with sang-de-boeuf glaze, with dark mottling. Rice-colored base. Teakwood stand. *Formerly in the J. H. Webster Collection.*

Height, 17 inches.

[SEE ILLUSTRATION]

- 332 APPLE-GREEN VASE MING  
 Small vase with globular body, coated with a deep apple-green glaze with giant crackle. Teakwood stand. Height,  $4\frac{1}{2}$  inches.  
 [SEE ILLUSTRATION]
- 333 IMPORTANT APPLE-GREEN JAR K'ANG-HSI  
 Flat globular jar shape supported by three short feet. Coated with a typical Lang-Yao apple-green glaze of soft and delicate color quality, with bold crackle. Teakwood stand and cover.  
 Height,  $3\frac{1}{2}$  inches. Diameter,  $7\frac{1}{2}$  inches.  
 [SEE ILLUSTRATION]
- 334 PEACHBLOOM WATER COUPE K'ANG-HSI  
 Low, rounded form, invested with a delicate, cloud-like peachbloom glaze of varying shades and marked with splashes of green, so-called unripe peach glaze. Has Imperial six-character mark under the foot. Ivory stand and cover. A specimen of peachbloom of superb quality. Diameter,  $4\frac{5}{8}$  inches.  
 [SEE ILLUSTRATION]
- 335 PEACHBLOOM COUPE K'ANG-HSI  
 Shallow globular form, invested with peachbloom glaze of various notes, with typical greenish fleckings. Six-character K'ang-hsi mark in blue. (Repaired.) Silver latticework cover. Teakwood stand. Diameter,  $4\frac{5}{8}$  inches.  
 [SEE ILLUSTRATION]
- 336 PEACHBLOOM CHRYSANTHEMUM BOTTLE K'ANG-HSI  
 Ovoid, with low convex foot and neck. Chrysanthemum petals, modeled in low relief, encircling the lower body. Invested with a rich and brilliant ripe peachbloom glaze of delicate hue, the soft purplish-pink enriched by deeper toned fleckings. Repaired, the crack covered by silver dragons reaching for the sacred jewel. Silver lip. The metal work is of exquisite workmanship. Imperial K'ang-hsi mark. Carved ivory stand. A bit of peachbloom in its rarest and most beautiful form.  
 Height,  $8\frac{1}{4}$  inches.  
 [SEE ILLUSTRATION]



332



333



336



335



334





- 337 VASE WITH PEACHBLOOM DECORATION K'ANG-HSI  
 On a white ground is the design of a dragon, soaring among clouds and reaching for the sacred pearl. At the foot of the bottle is a wave design. The whole decoration is executed in peachbloom color of unusual quality, interspersed with green specks. Teakwood stand. Height, 12 inches.

### A COLLECTION OF CHINESE FURNITURE AND VARIOUS OTHER OBJECTS

#### Lots 338—367

- 338 LARGE CLOISONNE BOWL MING  
 Lotus flower shape with scalloped edge and well-defined foot. Lotus decoration in various colors on green ground. Mark incised: A gem amongst precious vessels of rare stone.  
 Height, 18 inches. Diameter, 24½ inches.
- 339 LARGE POTTERY FLOWER POT SUNG  
 Tall barrel shape, decorated with four panels showing figures of Chinese Sages, penciled in brown on stone gray ground.  
 Height, 3½ inches. Diameter, 21½ inches.
- 340 IMPERIAL CLOISONNE PEDESTAL MING  
 Supported by six legs. Incised decoration of "Fong-hoa" birds, dragons and various flowers inlaid on the entire surface; the colors used in this enamel are the actual mineral stones, partially inlaid. It is one of the finest examples of Cloisonne ware, obtained from the famous Ton Shai Collection of Peking.  
 Height, 21½ inches.

- 341 CINNABAR LACQUER TRAY  
 Rectangular shape with four low feet. Elaborately carved with geometrical and flower designs on border, and a court scene in center panel. Length, 15 inches.
- 342 SMALL SQUARE TEAKWOOD STAND MING  
 Sides inlaid with Mother-of-Pearl in a floral design and poems. Richly carved teakwood aprons on the four sides.  
 Height, 3 inches. Top,  $9\frac{1}{4}$  inches square.
- 343 ELABORATELY CARVED TEAKWOOD STAND  
 Rectangular with edges of pierced work, four sides inlaid with carved panels of "Wang" wood. Carved jade figure standing at each corner.  
 Height,  $8\frac{1}{2}$  inches. Length, 17 inches. Width, 10 inches.
- 344 FRAMED CHINESE MIRROR CH' IEN-LUNG  
 Rectangular, upright, with teakwood frame and stand, inlaid with mother-of-pearl. Height,  $23\frac{1}{2}$  inches.
- 345 SMALL PORTABLE CABINET MING  
 Made of bamboo with lacquered door. Upper shelf is enclosed by two horizontal sliding doors of gold and red lacquer showing Chinese poets promenading in a garden. The left recess is larger than the right. They have black lacquered doors inlaid with Mother-of-Pearl, decorated with three Kyilins and peonies. The right recess is similar to the left one and has the bamboo tray at the base for teacups. Two drawers at the bottom with woven bamboo panels.
- 346 CHINESE LACQUER CABINET CH' IEN-LUNG  
 Open cabinet with a pair of hinged doors which are carved in relief in a conventional floral pattern. One shelf inside.  
 Height, 18 inches. Length,  $15\frac{1}{2}$  inches. Width,  $10\frac{1}{2}$  inches.
- 347 MANDARIN CABINET  
 Upper part has a broad framework opening, forming a shelf. Main part opens with two hinged doors, inlaid with gold lacquer, portraying a Chinese landscape with a villa, with a pair of metal strips and pendant handles. Two drawers at the base. Face of frame and the framed hinged doors and drawers are of black lacquer with mother-of-pearl inlay in a floral scroll.  
 Height, 62 inches. Length,  $47\frac{3}{4}$  inches. Width,  $17\frac{1}{2}$  inches.

- 348 CHINESE OAK CABINET CH' IEN-LUNG  
 Opens with invisible hinged doors, ornamented with square carved panels with a design of peach trees in fruit; the lower panels with a Chinese landscape in low relief. It has three shelves inside and whole cabinet is finished in rich teakwood color. Height, 52 inches. Length, 41 inches. Width, 16 inches.
- 349 CHINESE OAK CABINET CH' IEN-LUNG  
 Companion to the preceding.
- 350 CARVED TEAKWOOD CABINET CH' IEN LUNG  
 Elaborately carved of heavy teakwood with several étagères, one drawer and one closed section.  
 Height, 71½ inches. Width, 38½ inches.
- 351 TEAKWOOD FOLDING TABLE CH' IEN-LUNG  
 Round top with double molding edge. Six legs in the form of quadruple stems bulging outward rest on a hexagonal framework stand with a carved edge. The top is covered with brocade.  
 Height, 32½ inches. Diameter, 35 inches.
- 352 SMALL TEAKWOOD TABLE CH' IEN-LUNG  
 The apron decorated with two molded openings with inlaid "Wang" wood on each side, and below a band in a Grecian meander design in low relief, the legs square swelling slightly outward, a shelf made of dove-tailed slats forming irregular zigzag pattern. Height, 30¾ inches. Width, 19¾ inches.
- 353 ANCIENT KSAUGA TABLE TWELFTH CENTURY  
 Rectangular with slender lyre-shaped legs. Front and back apron in two sections showing a pair of horizontal openings carved in a floral shape with an irregular edge, the design repeated in bracket form on the knees. Entirely lacquered in black, the texture, like creased oil paper, known as "Dammon," the carvings lined with red. Gracefulness and delicacy of outline shown in this masterly design, probably one of the earliest specimens of Chinese furniture.  
 Height, 34 inches. Length, 34 inches. Width, 14 inches.

- 354 MANDARIN TEAKWOOD DINNER TABLE CH'IEN-LUNG  
 Square. Two narrow, horizontal openings with inlaid edges in the groove of the molded cornice on each side. Straight, square legs. Openwork aprons are in a broad design of fungus and clouds, executed in a style of great dignity.  
 Height, 32 inches. Top, 38 inches square.
- 355 IMPORTANT LACQUER TABLE MING  
 Decoration of peonies, birds and flowers, beautifully inlaid in mother-of-pearl.  
 Height, 31½ inches. Length, 51 inches. Width, 16¾ inches.
- 356 MOTHER-OF-PEARL INLAY TABLE MING  
 Black lacquer. Top inlaid with mother-of-pearl with a rooster and hen on a chrysanthemum mound with shady spreading maple trees and butterflies.  
 Height, 33¼ inches. Length, 51½ inches. Width, 27¾ inches.
- 357 FINE LACQUER TABLE MING  
 Beautifully inlaid in mother-of-pearl, plain center. The four letters on the corner of the inlaid border means "Hundred-fold happiness shall follow swiftly." Height, 32½ inches.  
 Top, 37½ inches square.
- 358 MOTHER-OF-PEARL INLAID LACQUER TABLE MING  
 Square, with round legs. Top beautifully decorated with peonies, magnolias, flying butterflies and a poem with wide floral border. Height, 32½ inches. Top, 37½ inches.
- 359 TEAKWOOD MUSIC ROOM TABLE CH'IEN-LUNG  
 Rounded rectangular shape, the top in irregular cloud pattern and with a wavy edge, supported by three pairs of square legs, and the middle are connected by a double elongated brace in a design of flowing water which runs the length of the table.  
 Height, 23¾ inches. Length, 54½ inches. Width, 14 inches.
- 360 CHINESE MANDARIN CHAIR CH'IEN-LUNG  
 Teakwood. Straight square legs, back carved with design of vases, inlaid with mother-of-pearl.
- 361 CHINESE MANDARIN CHAIR CH'IEN-LUNG  
 Companion to preceding.

- 362 DECORATED FIRE SCREEN TAO KUANG  
 Rectangular porcelain panel, decorated in famille-verte with a court scene. Frame elaborately carved teakwood.  
 Height, 44 inches. Width, 23 inches.
- 363 TEAKWOOD DISPLAY STAND  
 Bamboo design, with one large shelf at bottom and three irregular sections at top. Height, 42 inches. Width, 33 inches.
- 364 TEAKWOOD DISPLAY STAND  
 Companion to preceding.
- 365 PALACE LANTERN  
 Elaborately carved in teakwood in the form of hexagonal basket with a long loop handle.



- 366 IMPERIAL LACQUER BENCH  
 Red lacquer with insets of old carved panels in superb colorings of gold and deep violet hue with gold brocade cushion. Beautiful piece. Height, 33½ inches. Width, 41 inches.
- 367 IMPORTANT THIBETAN BENCH  
 High triangular back with four posters, elaborately carved in openwork of Celestial musicians, intermingled with floral motives and medallion of secret birds. Height, 50 inches. Length, 47 inches. Width, 27 inches.

### THIRD SESSION

Saturday Afternoon, February 19, 1921, at 2:30 o'clock

Lots 368—571

#### A COLLECTION OF CHINESE SNUFF BOTTLES

Lots 178—277

- 368 WOOD SNUFF BOTTLE  
Carved in shape of a fruit from the wood of the bamboo root, with carving in relief of rocks and flowers. Coral stopper.
- 369 AGATE SNUFF BOTTLE  
Oviform. Yellowish agate carved in relief. On one side are two sages playing chess, with a boy attendant, on the other three of Immortals and a horned monster carrying a jar.
- 370 AGATE SNUFF BOTTLE  
Brownish agate with a darker layer on both sides, in which is carved on the obverse an eagle on a pine tree under which a boar cub is standing, and on the reverse a quail under a tree.
- 371 JASPER SNUFF BOTTLE  
Small rounded flask shape. Jasper with large areas of red, yellow and green. Brightly polished.
- 372 GLASS SNUFF BOTTLE  
Bulbous flask shape. Opaque glass of light blue color. Lateral lion-head handles are carved on each side.
- 373 JADE SNUFF BOTTLE  
Grayish white jade, slender shape, all corners carved flat. Good piece.

- 374 AMBER SNUFF BOTTLE  
Club shape. Brownish clear amber with stopper of same material.
- 375 ONYX SNUFF BOTTLE  
Slender inverted pear shape. Red and white veined onyx.
- 376 CLOISONNÉ SNUFF BOTTLE  
On a rich blue ground are conventional flower designs in yellow, white, black and turquoise blue enamel on metal foundation. The original stopper is also inlaid in different colors. An extraordinary piece.
- 377 AMBER SNUFF BOTTLE  
Brownish semi-translucent amber, with carving of birds among foliage. Rudimentary ring handles are carved on both sides.
- 378 JADE SNUFF BOTTLE  
Jade, of dark and light gray color, carved in irregular shape of fruit; stopper, also of jade, forms stem of fruit.
- 379 LACQUER SNUFF BOTTLE  
Black lacquer, in shape of pilgrim bottle with rings at neck. Ivory stopper. Interesting piece. Formerly, evidently, used as medicine bottle.
- 380 TURQUOISE SNUFF BOTTLE  
Large irregular shape. Green turquoise, elaborately carved with leaves and flowers and birds. Carved stopper, with bird holding branch. A remarkable piece.  
[SEE ILLUSTRATION ON PAGE 77]
- 381 ENAMEL SNUFF BOTTLE  
Small pilgrim bottle shape. Covered in soft enamel colors with designs copied from European paintings. A bottle of very good quality.  
[SEE ILLUSTRATION ON PAGE 77]
- 382 IVORY SNUFF BOTTLE  
Carved in form of a fruit, decorated with leaves and insects. Stopper, also of ivory, represents stem of fruit. Ch'ien-Lung Mark.

- 383 BRONZE SNUFF BOTTLE  
Miniature bronze vase of the Ming period, transformed into snuff bottle. Inlaid in silver with conventional design.  
[SEE ILLUSTRATION ON PAGE 77]
- 384 POTTERY SNUFF BOTTLE  
Gourd shape. So-called "Tiger-spot" pottery of the Sung period. Formerly, evidently, used as medicine bottle. Rare specimen.
- 385 JADE SNUFF BOTTLE  
Flattened square shape. Grayish jade with brown markings, highly polished, carved in relief with landscape and figures. Stopper: carved coral. Beautiful piece.
- 386 BLOODSTONE SNUFF BOTTLE  
In form of fruit, of uniform peculiar olive hue with red marking, representing the drop of blood. The stopper forms the stem of the fruit.
- 387 SEA PINE SNUFF BOTTLE  
In a remarkably carved landscape with a pine and a prunus tree are carved on one side the figures of a mother with her two children begging from a lady on a horse, which is drawn by an attendant. On the other side is the God of Longevity giving back to a mother her child. The carving is of extraordinary quality and every line shows the master hand of a great artist.
- 388 CLOISONNÉ SNUFF BOTTLE  
Cylindrical form broadening toward the foot with original stopper. Cloisonné, on gilded ground, with raised design of bats in clouds.
- 389 AGATE SNUFF BOTTLE  
Greyish semi-translucent agate carved with design of fisherman in sailing boat catching a fish.



- 390 RED LACQUER SNUFF BOTTLE  
Cinnabar lacquer, of finest quality and richest red tone, with original stopper. Base of bottle bears carved Shou mark of longevity, while the scenery shows on one side two ladies, on the other two men in landscape. The carving is unusual and the lacquer of a quality rarely found.  
[SEE ILLUSTRATION ON PAGE 77]
- 391 PORCELAIN SNUFF BOTTLE  
Inverted pear shape. Blue glazed, porcelain carved and pierced with decoration of dragons among clouds.
- 392 AMBER SNUFF BOTTLE  
Yuan Amber of chocolate brown color with lighter markings. A branch of the prunus tree is carved in low relief on one side of the bottle.
- 393 SHELL SNUFF BOTTLE  
Carved, in gourd form, out of a shell, showing the natural veining. Very unusual piece.
- 394 PORCELAIN SNUFF BOTTLE  
Cylindrical shape with narrow neck. White porcelain decorated in rich sapphire blue with design of the "hundred boys" at play. Stopper: a mounted pearl. A bottle of exceptional quality.
- 395 JADE SNUFF BOTTLE  
Jade of yellowish color with green flecks. Carved ring handles.
- 396 PORCELAIN SNUFF BOTTLE  
Large cylindrical shape. Porcelain covered with a multitude of flowers of all kinds and different colors, so called "mille fleurs" design.
- 397 AGATE SNUFF BOTTLE  
Greyish, semi-transparent agate. On the front is carved out of a brown strata the figure of a boy flying a kite, which is represented by a brown strata inside of the stone. A remarkable specimen showing the skill of the Chinese artisan in utilizing natural markings of hard-stones.

- 398 **PORCELAIN SNUFF BOTTLE**  
 White bisque porcelain with the sacred horse, carved in relief. Stars ornament the other parts of the bottle. Silver stopper. A rare piece.
- 399 **JADE SNUFF BOTTLE**  
 Flattened flask shape. Fei-'tsui jade with veins of rich emerald green. Stopper of same material.
- 400 **MALACHITE SNUFF BOTTLE**  
 In form of fruit, carved with leaves. Coral stopper forms stem of fruit.
- 401 **LACQUER SNUFF BOTTLE**  
 Lacquer on metal foundation, inlaid with mother of pearl, in shape of butterfly. Original stopper, also inlaid.
- 402 **PORCELAIN SNUFF BOTTLE**  
 Rectangular shape. White porcelain with raised flower decoration on each of the four sides, executed in enamel colors.
- 403 **IVORY SNUFF BOTTLE**  
 Elaborately carved. The scene represents a garden party and the whole is delicately tinted. Original stopper of same material.
- 404 **IVORY SNUFF BOTTLE**  
 Ivory, carved in relief with figures and landscapes. Very good carving.
- 405 **PORCELAIN SNUFF BOTTLE**  
 Gourd shape, covered with mustard yellow glaze, finely crackled.
- 406 **SOAPSTONE SNUFF BOTTLE**  
 Inverted pear shape. Old grey soapstone with figures of the Immortals with their emblems carved in high relief among clouds. Stopper to match. Very rare in this quality.
- 407 **GLASS SNUFF BOTTLE**  
 Milk white opaque glass with black handle outlines at the sides and black ring at the foot.

- 408 GLASS SNUFF BOTTLE  
Carved in cameo style; reliefs in black on white, milky ground. On one side are two cranes, on the other two stags under a pine tree. Amber stopper.
- 409 PORCELAIN SNUFF BOTTLE  
Covered with café-au-lait glaze, finely pierced work of geometrical design.
- 410 HORN SNUFF BOTTLE  
Carved from the hornlike excrescence of the upper mandible of the helmeted hornbill (*Rhinoplax vigil*). The natural colors of the bill, yellow and crimson, are skilfully utilized in the carving of this bottle, the yellow portions forming the two large surfaces, the two crimson parts which are carved with designs of dragons, the two narrow sides. Very unusual bottle.  
[SEE ILLUSTRATION ON PAGE 77]
- 411 GLASS SNUFF BOTTLE  
Clear glass, on the outside in low relief branches of the prunus tree and a butterfly, delicately tinted. An unusual piece of great beauty.
- 412 PORCELAIN SNUFF BOTTLE  
Gourd form. Porcelain with rich green glaze, the whole surface crackled.
- 413 AGATE SNUFF BOTTLE  
Clear white translucent agate, brightly polished.
- 414 POTTERY SNUFF BOTTLE  
Covered with robin's egg-colored glaze. Stopper of wood, inlaid with ivory, representing the symbol of the Tae-keih.
- 415 MINIATURE SNUFF BOTTLE  
Agate of turquoise blue tone, flecked with light brown veins. Original stopper.
- 416 MINIATURE SNUFF BOTTLE  
Turquoise of light blue tone with silver speckles. Original stopper.

- 417 GLASS SNUFF BOTTLE  
 Opaque-glass, café-au-lait color, carved in cameo style with crabs, in a green layer.
- 418 MINIATURE SNUFF BOTTLE  
 Carved of beautifully toned amethyst. Original stopper.
- 419 MINIATURE SNUFF BOTTLE  
 Gourd shape, carved of lapis-lazuli. Stopper with coral top.
- 420 RUBY GLASS SNUFF BOTTLE  
 Tapering shape, the cameo carving including a crane with a letter in his bill, bat, diving carp, and dragon amid sea waves and scrolls.
- 421 MINIATURE SNUFF BOTTLE  
 Porcelain covered with rich camellia leaf green glaze, in shape of a bean. Stopper with coral top.
- 422 JADE SNUFF BOTTLE  
 Black jade, with incised decoration of a branch and a poem. Coral stopper.
- 423 STONE SNUFF BOTTLE  
 Pudding stone of gray background, filled with yellow, brown and black speckles.
- 424 AGATE SNUFF BOTTLE  
 Greyish white agate, brilliantly polished. Stopper also of agate.
- 425 SILVER SNUFF BOTTLE  
 In vase form, with movable ring handles. Chiselled decoration of flowers, animals and figures covers the entire bottle. Stopper: a coral bead on silver ring.
- 426 JASPER SNUFF BOTTLE  
 Jasper of yellowish olive tint, brilliantly polished. A strata of red has been utilized for the carving of a fish, while a lotus flower is carved in a green layer. Stopper also of jasper.

- 427 HORN SNUFF BOTTLE  
Flattened shape. Buffalo horn, with landscape and figure decoration, which is incised and gilded.
- 428 PORCELAIN SNUFF BOTTLE  
Elongated pear shape. Carved porcelain decorated with rich enamel colors. On one side is a dragon among clouds, playing with the flamed ball; on the other a phoenix. Bands of black with green decorate the upper and lower part of the bottle. Silver stopper mounted with semi-precious stones.  
[SEE ILLUSTRATION ON PAGE 77]
- 429 AMBER SNUFF BOTTLE  
Brilliant deep-yellow clouded amber of flawless quality. Fei-tsuï jade stopper.
- 430 IVORY SNUFF BOTTLE  
Carved in high relief and colored in subdued green and red, showing the immortals mixing medicine under the Pine Grove.
- 431 SOAPSTONE SNUFF BOTTLE  
Decoration of a court scene, where friendly greetings are being interchanged in a garden of everlasting palms.
- 432 CLOISONNÉ SNUFF BOTTLE  
Urn shape with animal head handles. Original stopper. Cloisonné on copper. The conventional lotus flower design is in red and yellow on blue ground.
- 433 TOURMALINE SNUFF BOTTLE  
Pink tourmaline, heart shape, carved in the "Chinese ruby," brilliantly polished and with ornamentation of animals. Rare piece.
- 434 BRONZE SNUFF BOTTLE  
The outer casing in open work. A conventional floral band surrounds circular panels in which a phoenix is chiselled in relief. The original stopper is studded with coral and turquoise beads. The workmanship of the bottle shows Siamese influence.



383



410



381



428



380



459



390



440

- 435 JASPER SNUFF BOTTLE  
Jasper, brilliantly polished of yellowish ground, with brown markings. Green jade stopper.
- 436 AGATE SNUFF BOTTLE  
Greyish semi-translucent agate, brilliantly polished. A natural discoloring of the stone, in brown, has been skilfully utilized for the carving of a pine tree.
- 437 AGATE SNUFF BOTTLE  
Reddish agate with brown mottling. Brilliantly polished.
- 438 AGATE SNUFF BOTTLE  
Transparent agate, carved in relief in brown with large grasshopper crawling over a reclining jar on which coins are represented. The grasshopper is regarded as a symbol of fecundity, and its image is expressive of the wish "numerous and remarkable sons and grandsons!" here with the addition of wealth (indicated by the coins) and peace (indicated by the jar).
- 439 SILVER ENAMEL SNUFF BOTTLE  
Rectangular. A double chest with a small compartment in the form of a Tea Caddy, with indented edge. Decoration of storks, deer, bamboo and lotus, enameled in colors on sterling silver.
- 440 FEI-'TSUI JADE SNUFF BOTTLE  
Flattened flask shape. Fei-'tsui jade richly and beautifully mottled in fine emerald green, white and a vaporous grayish-white, and brilliantly polished.  
[SEE ILLUSTRATION ON PAGE 77]
- 441 IVORY SNUFF BOTTLE  
Flat ovoid shape. Decoration on one side shows a Chinese boy chasing a butterfly and on the other side a cluster of lotus flowers and leaves.
- 442 GLASS SNUFF BOTTLE  
Yellow and red mottled opaque glass with carved decoration of animals. Unusual piece.

- 443 PORCELAIN SNUFF BOTTLE  
Painted in European style. In the two panels which are surrounded by gilt borders are enameled paintings in Ku Yu Hsin style, one representing a lady with a flower, the other a girl with fruit. A very rare and valuable bottle.  
[SEE ILLUSTRATION ON PAGE 81]
- 444 JADE SNUFF BOTTLE  
Green Chloromelanite in form of Chinese pepper. Coral stopper.
- 445 JASPER SNUFF BOTTLE  
Highly polished jasper of greenish-black tone, with carved figures in a brown matrix.
- 446 AQUAMARINE SNUFF BOTTLE  
Aquamarine of clear, light blue tint. Carved decoration of Chinese Immortals enjoying outing under pine trees. Fei-'tsui jade stopper. A beautiful specimen.  
[SEE ILLUSTRATION ON PAGE 81]
- 447 JASPER SNUFF BOTTLE  
Large flask shape. Jasper of brownish red color.
- 448 MOTHER-OF-PEARL SNUFF BOTTLE  
Carved in form of fish. Top of colored glass suggesting water sprouting out of the fish's mouth. Unique piece.
- 449 GLASS SNUFF BOTTLE  
Large size, pilgrim bottle shape. Brownish transparent glass colored with black flecks. Glass in remarkable imitation of tortoise shell. Glass stopper.
- 450 CORAL SNUFF BOTTLE  
Beautifully carved coral of pinkish hue. The carving consists of flowers, leaves, and animals, occasional white specks being utilized for the centers of flowers. Carved coral stopper.  
[SEE ILLUSTRATION ON PAGE 81]
- 451 AMBER SNUFF BOTTLE  
Carved amber. Low relief decoration of Foo lions and pine trees in light brown strata of amber of golden translucence. Carved animalistic handles. Fei-'tsui jade stopper.



- 452 **IVORY SNUFF BOTTLE**  
 Bulbous flask shape, carved ivory. The scene shows the eighteen Arhat in Paradise. They are grouped, each holding his emblem, on the terrace of a celestial building, surrounded by clouds, trees and rocks. Stopper of ivory with flower pattern. Minute carving of finest quality.  
 [SEE ILLUSTRATION]
- 453 **CLOISONNÉ SNUFF BOTTLE**  
 Black cloisonne with gold wire inlay, lotus flowers and scroll pattern delicately outlined. Original stopper.
- 454 **PORCELAIN SNUFF BOTTLE**  
 Imperial Ch'ien-Lung. White bisque porcelain, carved and pierced decoration of five-clawed dragons and clouds. Original cover carved with designs of phoenix. Rare specimen of great beauty.  
 [SEE ILLUSTRATION ON PAGE 81]
- 455 **GLASS SNUFF BOTTLE**  
 Mottled glass of yellow ground with red markings. Beautiful piece.
- 456 **AMETHYST SNUFF BOTTLE**  
 Large size, with carved handles. Amethyst of beautiful rich and even color. Fei-'tsui stopper.
- 457 **AMBER SNUFF BOTTLE**  
 Amber of rich brown color. The seated figure of the God of Happiness leaning against the wine jar, which represents the snuff bottle. Very unusual piece.  
 [SEE ILLUSTRATION ON PAGE 81]
- 458 **JADE SNUFF BOTTLE**  
 Pilgrim bottle shape with flattened sides and circular panels. Carved of rare colored Fei-'tsui jade, with black mottling. Rare piece.
- 459 **GLASS SNUFF BOTTLE**  
 Slender bottle shape. Opaque white glass, carved in cameo style with design of prunus blossoms in different shades of blue. Coral stopper. Delicate and beautiful piece.  
 [SEE ILLUSTRATION ON PAGE 77]



446



450



452



454



443



457

81



460



461



462

460 JADE SNUFF BOTTLE

Vase form with animalistic side handles and movable rings. Pure white mutton fat jade, brightly polished. Fei-'tsui jade stopper on silver ring.

[SEE ILLUSTRATION]

461 CORAL SNUFF BOTTLE

Irregular shape, carved in high relief out of a piece of pink coral of rare even shade. The carving consists of Chinese sages in boats, performing miracles, and a boy looking on from the top of a hill. Original stopper shows also the kneeling figure of a boy. Ivory stand, tinted green. A magnificent piece.

[SEE ILLUSTRATION]

462 AQUAMARINE SNUFF BOTTLE

Large irregular shape, carved in high relief with trees and birds. Stopper, also of aquamarine, shows a bird perched on a branch.

[SEE ILLUSTRATION]

- 463 **IVORY SNUFF BOTTLE**  
 Large flask shape, with carved panels, in one a figure, in the other a bird and flower. Sides carved with conventional design. Original stopper.
- 464 **GLASS SNUFF BOTTLE**  
 White opaque glass carved in cameo style, with side handles in blue. Circular panels, set in at both sides, show richly colored designs of fishes and sea dragons. Silver cover.
- 465 **PORCELAIN SNUFF BOTTLE**  
 Flattened pear shape, carved in relief and covered with rich enamel colors. The scene shows on one side a lady with her attendants in a boat, on the other side the emperor with his entourage awaiting her.
- 466 **PORCELAIN SNUFF BOTTLE**  
 Cylindrical shape. White ground with figures of two mandarins, each holding a cage in his hand. Very unusual coloring.
- 467 **ENAMEL SNUFF BOTTLE**  
 Graceful shape. Scenes of Chinese domestic life are painted on each side of bottle, in an unusual color combination. Chiselled metal stopper.

## **A COLLECTION OF CHINESE COATS, EMBROIDERIES AND WALL HANGINGS**

**Lots 468—491**

- 468 **PAIR CHINESE SLEEVEBANDS**  
 Framed. Remarkable embroidery in knot work on gray brocade. Twelve gourds surrounded by flowers, leaves and butterflies contain the twelve animals in the Zodiacal signs. The whole is executed in a wonderful blending of colors and with the greatest skill.
- 469 **PAIR CHINESE SLEEVEBANDS**  
 Embroidered on white satin with flowers and butterflies, in rich colors.

- 470 PAIR CHINESE SLEEVEBANDS  
Embroidered in rich colors on white satin with scenes of the boys' festival.
- 471 PAIR CHINESE SLEEVEBANDS  
Embroidered on gray silk in soft colors with design of lotus pond, with birds and fishes.
- 472 PAIR CHINESE SLEEVEBANDS  
Embroidered on red satin in blue of various shades with design of vases and flowers.
- 473 CHINESE EMBROIDERY  
Square. White satin, embroidered in various colors, with flowers and butterflies. Size, 30 inches.
- 474 CHINESE EMBROIDERY  
Flowers and Ho-Ho birds embroidered on old rose satin. Length, 24 inches. Width, 16½ inches.
- 475 EMBROIDERED SATIN HANGING  
Decoration of landscape and figures, beautifully embroidered on an Imperial yellow ground. Length, 54 inches.
- 476 EMBROIDERED SATIN HANGING  
Landscape embroidery on yellow ground with black silk border. Length, 4 feet, 6 inches. Width, 1 foot, 3 inches.
- 477 CHINESE LADIES' COAT  
Dark blue satin, embroidered with medallions of domestic scenes which are surrounded by flying birds and sprays of flowers. Border of white embroidered silk. Sleevebands of white satin, with landscape and bird decoration. The embroidery of this coat is of great beauty and fine quality.
- 478 CHINESE LADIES' COAT  
Dark blue satin with embroidery in blue and white of butterflies and chrysanthemums. Sleevebands of golden yellow brocaded silk, embroidered in rich colors, with landscape design. Lining of blue silk. Beautiful piece.



479 CHINESE LADIES' COAT

Dark blue satin, embroidered in rich colors with vases, with flowers and scattered blossoms. Bordered by a white brocaded band with flower design. Sleeve bands in white silk and embroidery in Pekin stitch. Yellow silk lining. A coat of rare beauty.

480 CHINESE LADIES' COAT

Dark blue satin, with scattered designs of flowers and butterflies embroidered in rich harmonious colors. Wave design at bottom. Blue silk lining. Very attractive piece.

481 CHINESE LADIES' COAT

White satin with scattered designs of butterflies and flowers, embroidered in soft colors with "Pekin" stitch. Beautifully embroidered border with landscape design. White silk lining. Very unusual coat.

- 482 CHINESE LADIES' COAT  
Midnight blue taffeta silk. Embroidered with medallions of flower designs in rich colors and gold. Sprays of flowers and emblems of good luck are scattered over the coat. Border of dark blue silk embroidered with flowers. Sleeveband of white satin embroidered in rich colors, with vases and flowers. Blue silk lining. A coat of unusual high quality and great beauty.
- 483 CHINESE LADIES' COAT  
Short. Light blue brocaded silk with embroidery of butterflies and flowers in Pekin stitch. Border of black silk embroidery. Red silk lining.
- 484 CHINESE LADIES' COAT  
Rich red satin, embroidered in soft colorings with sprays of flowers. Black satin border, also embroidered, and white satin sleevebands with flower decoration. Beautiful coat.
- 485 CHINESE LADIES' COAT  
Dark blue taffeta silk. Dainty embroidery of medallions with domestic scenes and sprays of flowers. Bordered of white satin with figures and landscape. Sleeveband of pale yellow satin, embroidered with the familiar design of the hundred happy boys. A coat of great refinement and unusual high quality. Blue silk lining.
- 486 OFFICIAL TAPESTRY MANDARIN COAT  
On a light blue ground designs of imperial five-clawed dragons arising from the sea, reaching for the precious jewels guarded by the heavenly dragon. Design of flowers and emblems of good luck and happiness are strewn all over the tapestry. Blue silk lining. Very good condition.
- 487 OFFICIAL TAPESTRY MANDARIN COAT  
Brown. Design similar to the above.
- 488 ANTIQUE CALICO TABLE COVER  
Peony scroll medallion in dull red and brown in the center surrounded by coin and floral patterns in deep magenta red and green on a buff ground.  
Length, 5 feet, 10½ inches. Width, 4 feet, 6½ inches.

- 489 BROCADE TABLE COVER  
 Ancient Sou Chow textile. Floral crest patterns in subdued green on an old rose ground, lined with Hindoo linen.  
 Length, 7 feet. Width, 5 feet, 7½ inches.
- 490 CHINESE WALL HANGING  
 Crimson losha wool, embroidered in rich colors, with floral scroll pattern and Greek fret border. Lined with silk.  
 Width, 4 feet, 5½ inches. Length, 9 feet, 7 inches.
- 491 IMPERIAL TEMPLE HANGING CH' IEN-LUNG  
 Beautiful floral design cut on soft orange silk velvet. Border of key pattern. Magnificent specimen.  
 Length, 8 feet, 10 inches. Width, 6 feet.

### A COLLECTION OF PLATES AND PLAQUES

#### Lots 492—521

- 492 PAIR FAMILLE-VERTE PLATES K'ANG-HSI  
 In the center is a floral decoration in famille-verte colors. The border consists of a green speckled band with hawthorn blossoms in red and four white reserves decorated with symbols.  
 Diameter, 9 inches.
- 493 PAIR IMPERIAL DISHES CH' IEN-LUNG  
 White hard paste porcelain. On the exterior is a ground of Royal blue, a conventional flower design in famille rose colors. Inside of plate are five bats in coral red on clear white ground. Square Ch'ien-lung mark in blue. The porcelain of these plates is of excellent quality. Diameter, 6¼ inches.
- 494 PAIR IMPERIAL DISHES CH' IEN-LUNG  
 Similar design, on pale blue ground. Diameter, 6¼ inches.
- 495 PAIR IMPERIAL DISHES CH' IEN-LUNG  
 Similar design, on turquoise blue ground.  
Diameter, 6¼ inches.
- 496 PAIR IMPERIAL DISHES CH' IEN-LUNG  
 Similar design in Rose-du-Barry enamel on white ground.  
Diameter, 6¼ inches.



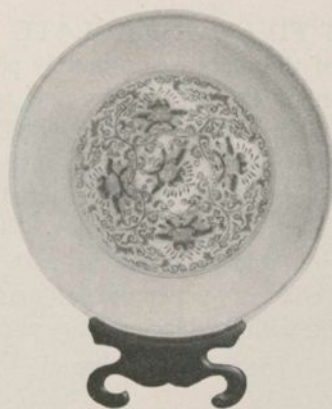
- 497 IMPERIAL YELLOW PLATE K'ANG-HSI  
 Deep dish, invested with an even glaze of rich imperial yellow.  
 Mark: Chia Ching in double ring. Diameter, 7 inches.
- 498 DECORATED PLATE K'ANG-HSI  
 The border consists of a broad band of black glaze, relieved by  
 white hawthorn flowers. The center shows a boy holding a  
 flower, on a green ground, surrounded by a rouge-de-fer bor-  
 der. Mark: Square Hall Mark in double ring.  
Diameter, 8½ inches.
- 499 ENAMEL PLATE CH'IEN LUNG  
 The back of plate and front border decorated with floral bands  
 on yellow ground. Center panel shows design of flowers and  
 two mandarin ducks, the symbol of matrimonial bliss. Square  
 hall mark. Very fine enamel work on copper.  
Diameter, 8½ inches.
- 500 FAMILLE-ROSE PLATE YUNG-CHÊNG  
 Deep dish form. The decoration consists of sprays of peony  
 and chrysanthemum, with stalks and foliage, all executed in  
 famille-rose colors. Mark: N-176. (The museum mark.)  
Diameter, 8¾ inches.  
*Formerly in the Dresden Museum Collection.*
- 501 FAMILLE-VERTE PLATE K'ANG-HSI  
 On white ground is the design of a large dragon, in green with  
 red scales, soaring among clouds and reaching for the sacred  
 pearl. Diameter, 10½ inches.
- 502 FAMILLE-VERTE PLATE K'ANG-HSI  
 On white ground decoration of Ho-Ho birds and various  
 flowers in rich enamel colors and gold. Border of seeded  
 ground charged with flowers and interrupted by four panels  
 with fish decoration. On back of plate is a border and sprays  
 of flowers. Slight crack. Diameter, 8¾ inches.
- 503 PAIR BLUE AND WHITE PLATES K'ANG-HSI  
 Deep saucer shape, decorated in different shades of blue with  
 landscape and a large Kylin. Diaper band forms border. On  
 back, design of rocks. Square mark in double ring.  
Diameter, 8¼ inches.



504 FAMILLE-NOIRE PLATE

CH' IEN-LUNG

The surface is covered with a black glaze which is relieved by leaves and flowers in various colors and by two white scrolls, one wide and one narrow, which are decorated with flowers and leaves in famille rose style. Diameter,  $9\frac{1}{8}$  inches.



505 BEAUTIFUL FLOWER PLATE

YUNG CH'ENG

In the center is a scroll decoration in underglaze blue, with leaves in green and flowers in red with yellow. This decoration is encircled by a wide band of white, finished off by two blue rings. On the back the decoration is repeated and executed with the same skill. Mark: Yung Ch'eng in double ring. A minute description of this plate is given by Gulland (No. 652), who calls it "a typical Yung Ch'eng piece; the porcelain and everything about it is excellent." Diameter,  $10\frac{1}{2}$  inches.

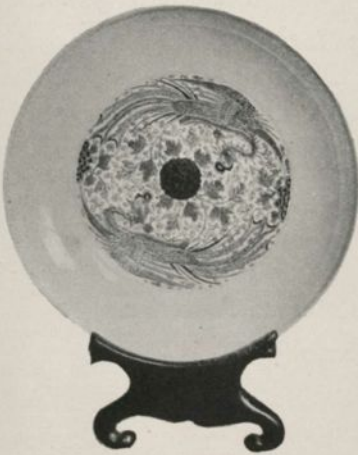
- 506 ROSE BACK EGGSHELL PLATE CH' IEN-LUNG  
 Deep shape; fine white eggshell porcelain with rich overglaze decoration in brilliant colors of the famille rose palette. Two roosters in rich plumage, on rocks in bright blue and peonies in pink with green leaves, form the decoration of the center, which is surrounded by a narrow green diaper band. The rim is covered with a wide diaper border of pink and black and interrupted by three white oblong reserves decorated with flowers and fruit. Back covered with beautiful Rose-du-Barry color. A slight crack is repaired with gold lacquer.  
 Diameter, 8¼ inches.  
 [SEE ILLUSTRATION]
- 507 ROSE BACK EGGSHELL PLATE CH' IEN-LUNG  
 Deep shape; fine white eggshell porcelain, beautifully decorated in famille rose colors. The goddess Si-Wang-Mu with her attendant is depicted travelling on waves. The border design consists of flowers and fruits. Back covered with rich Rose-du-Barry color. A piece of delicate beauty.  
 Diameter, 8 inches.  
 [SEE ILLUSTRATION]
- 508 IMPORTANT FIVE-COLOR PLATE K'ANG-HSI  
 In the center of the plate is a minutely painted circular panel with decoration of flowers, leaves and two Ho-Ho birds in rich plumage. The whole is surrounded by a wide band of clear white porcelain in which are, incised under the glaze, lotus scrolls. This white band is bordered on each side by two blue rings. The back of the plate shows the same motive as the center decoration and is executed with the same skill and brilliancy of colors. Ch'êng-Hua mark in double ring. Slightly repaired with gold lacquer. A plate of unusual quality.  
 Diameter, 8¼ inches.  
 [SEE ILLUSTRATION]
- 509 IMPORTANT SIX BORDER PLATE YUNG CHÊNG  
 Saucer, having a center panel decorated with the figure of Lao Tsu and his mule, followed by his disciple Ing-Ty, carrying a parcel of scrolls. The robes of the god and his companion are painted with rich enamel colors. Rocks, flowers and the sun breaking through clouds complete the beautifully executed scene, which is surrounded by six minutely painted borders. The back of the dish is covered with a rare coral-red glaze. This plate is a gem.  
 Diameter, 6¼ inches.  
 [SEE ILLUSTRATION]



506



507



508



509

- 510 IMPORTANT POWDER BLUE PLATE K'ANG-HSI  
White porcelain of finest texture covered with a beautiful powder-blue glaze, with gold scroll design. Four panels are left white on border and decorated with flowers and inserts in famille-verte and black. A center panel is also left white and decorated in enamel color with design of butterflies and cherry blossoms. Diameter, 10½ inches.

*Formerly in the J. Pierpont Morgan Collection.*

[SEE ILLUSTRATION]

- 511 IMPORTANT POWDER BLUE PLATE K'ANG-HSI  
Similar to preceding, but with lotus design. Diameter, 10½ inches.

*Formerly in the J. Pierpont Morgan Collection.*

[SEE ILLUSTRATION]

- 512 IMPORTANT POWDER BLUE PLATE K'ANG-HSI  
Similar to preceding, but with peony design. Diameter, 10½ inches.

*Formerly in the J. Pierpont Morgan Collection.*

[SEE ILLUSTRATION]



510

512

511

- 513 SANG-DE-BOEUF PLATE K'ANG-HSI  
 The whole surface is covered with a sang-de-boeuf glaze of the crushed strawberry type. Also the rim of the back has the same glaze, while the bottom shows the typical rice-color crackle of the Lang-Yao porcelain. Diameter, 8½ inches.
- 514 CELADON PLAQUE CH'EN-LUNG  
 Deep form, with shaped edge. Both sides are covered with an even celadon glaze. The decoration is carried out in deep blue, edged by a white border and consists of a shou mark in the center, which is surrounded by five idealized bats, and on the rim are eight conventional ornaments. Square Ch'ien-Lung mark. Diameter, 12 inches.
- 515 LARGE BLUE AND WHITE PLAQUE K'ANG-HSI  
 Painted in underglaze blue with a high-handled basket of flowers. Border also with flower decoration. On the outside rim are sprays of flowers. Mark: a flower in double ring. Diameter, 15½ inches.
- 516 POWDER BLUE PLAQUE YUNG CHÊNG  
 Gulland describes a plate like this as follows: “. . . a typical example of the porcelain of this period. Diameter thirteen inches, height two and a half inches. Mark: Yung Chêng, in two blue rings. The surface, back and front, is covered with powdered blue, the flowers and foliage in this case being left plain, and the porcelain, which is of a beautiful white color, shows up in marked contrast to the blue ground. The flowers, leaves and stems seem to be very slightly recessed, while the veining is somewhat moulded, so as to stand up.”  
Diameter, 13 inches.
- 517 LARGE FIVE-COLOR PLAQUE K'ANG-HSI  
 In a polyfoil center panel is the design of a large basket filled with various flowers. Surrounding this are eight panels with animals, flowers and the “Hundred Antiques.” Between panels is a green speckled ground. The whole decoration executed in rich enamel colors. Repaired. Diameter, 18¼ inches.



518 IMPORTANT LANG YAO PLAQUE

K'ANG-HSI

The surface is covered with sang-de-boeuf glaze of even soft color, with darker crackle. The underside of rim also sang-de-boeuf; the foot of crackled celadon color with red splashes. Carved Teakwood stand.

Diameter, 14½ inches.



## 519 FAMILLE-ROSE PLAQUE

YUNG CHÊNG

The rim is decorated with large ju-i head-shaped ornaments in brown-red curl work, charged with rose-colored peonies and other flowers. In the center is an arrangement of various flowers and leaves also executed in the colors of the famille rose. Teakwood stand. A plate of this type is described by Gulland. Diameter, 14 inches.

[SEE ILLUSTRATION]

## 520 FAMILLE-VERTE PLAQUE

K'ANG-HSI

Deep shape. The rim is covered with diaper work, relieved by six panels and six blossoms. In the panels are designs of various fruits. In the center of plate is a circular panel, surrounded by eight fan-shaped panels, each of them showing a different design of flowers. The whole decoration is executed in brilliant enamel colors, on finest quality porcelain. Repaired. Diameter, 15 inches.

[SEE ILLUSTRATION]

## 521 IMPORTANT FIVE-COLOR PLAQUE

MING

Dense white porcelain decorated with the five colors—blue and red under the glaze, and green, yellow and aubergine over the glaze. In the center are various inhabitants of the sea, as fishes, crabs and sea shells. This field is surrounded by a blue border relieved by small flowers and four panels with symbols. Then comes a broad white band decorated with conventionalized flower design in bold and vigorous treatment and four shield shaped panels with the flowers representing the four seasons. The plate is bordered by a blue band with flowers and eight panels with symbols. On back of plate a flower and leaves ornamentation. Mark: a flower. A Ming piece of excellent quality. Diameter, 20½ inches.

[SEE ILLUSTRATION]



520

521

519

**A COLLECTION OF OBJECTS OF JADE, ROCK CRYSTAL  
AND OTHER HARD STONES**

**Lots 522—540**

**522 CARVED AGATE ORNAMENT**

Very unusual combination of grayish blue agate and white quartz. The carving consists of the figures of a mother duck with her young one. Silver inlaid teakwood stand.

**523 CARVED AGATE BOWL**

An exceptional piece of jasper-agate of wonderful coloring in different shades of green and dragon-blood red carved in shape of a bowl, hollowed on the inside. A large sea monster and a ball on waves are carved in high relief, advantage being taken of the colors of the stone. Teakwood stand. Height, 4 inches.

**524 ROCK CRYSTAL FLOWER VASE**

Three hollowed tree stumps form openings for flowers. A deer and pine tree complete the carving. Carved ivory and teakwood stand. Height, 5 inches.

**525 ROCK CRYSTAL VASE WITH COVER**

Slender flattened shape with dragon handles. Dragons fighting for sacred balls and Greek fret border at top and bottom, incised on the two large sides. Has rock crystal foot and cover, the latter carved with figures of two lion cubs. Teakwood stand. Height, 11 inches.

[SEE ILLUSTRATION]

**526 ROCK CRYSTAL VASE WITH COVER**

Large flask shape, resting on rockery and growths of the sacred fungus, carved in open work, and embraced by trunk and branches of pine and peach trees, a trunk at one side being hollowed and forming a second vase. Birds add to the decoration and the dome cover is surmounted by a bird with a cluster of peaches. Carved teakwood stand. Height, 8½ inches.

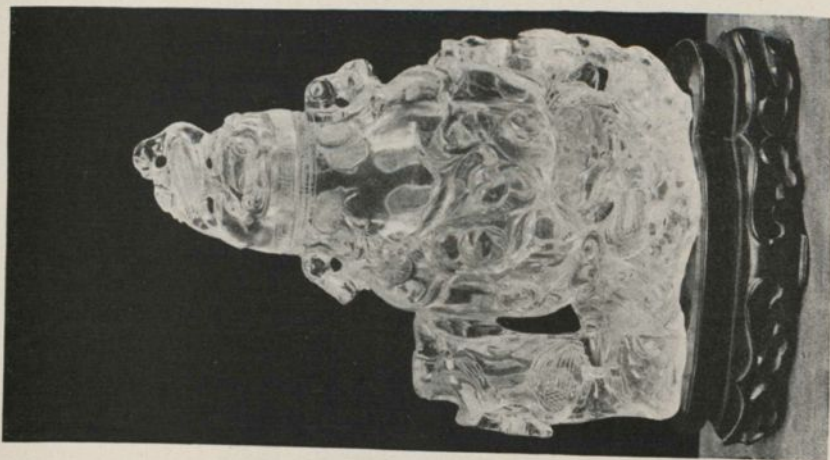
[SEE ILLUSTRATION]

**527 GOLD STONE VASE AND COVER**

Carved of glittering aventurine, so-called Chinese gold stone, with raised decoration of gourds and leaves. Side handles and cover are carved in open work. Beautiful specimen.

Height, 10 inches.

[SEE ILLUSTRATION]



526



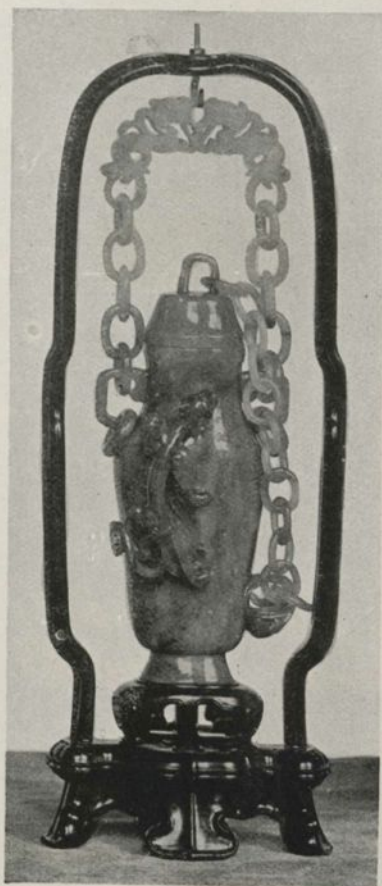
527



525



- 528 MUTTON-FAT JADE VASE  
A mythological animal holding the vase on its back. The cover is connected with the vase by means of a chain of movable rings, the whole being carved out of one piece of clear mutton-fat jade. Elaborately carved teakwood stand.  
Height, 7 inches.
- 529 FEI-'TSUI JADE PENDANT  
A square piece carved in pierced work with the Shou mark and waves. To this is attached a big drop of jade. Gold mounted.
- 530 CHLOROMELANITE PENDANT  
Carved in high relief with lotus flower design. Rich deep colored chloromelanite with tourmaline mounting.
- 531 FEI-'TSUI JADE GIRDLE CLASP  
Translucent green jade in carved form with dragon head and dragon on handle, carved in relief, with open work and undercutting.
- 532 FEI-'TSUI JADE GIRDLE CLASP  
Ancient form of girdle clasp. Curved form with dragon head and a dragon carved in relief with open work and undercutting. Translucent grayish white jade, with areas of emerald green.
- 533 SMALL JADE TABLE SCREEN  
White jade, carved and pierced with animal figures and the Shou mark of longevity, on finely carved teakwood stand.  
Height, 5¼ inches.



534 IMPORTANT FEI-'TSUI JADE HANGING VASE

The vase of graceful slender shape is decorated with a coiled lizard boldly carved in high relief. At the foot of vase is carved in open work a fungus which holds a chain of movable rings leading to the cover. At neck of vase are two loop-handles from which chains of movable rings lead to a support on which the vase is hanging. The whole carving is executed with greatest skill out of one piece of beautifully shaded Fei-'tsui jade and is suspended from an elaborately carved teakwood frame.

Height, 8½ inches.



- 535 IMPORTANT FEI-TSUI JADE HANGING VASE  
Slender, pear shape, of beautiful even color. The body is decorated with three bands of conventional design carved in low relief. Side knobs support a tall and massive handle, decorated with dragon design. Cover carved in open work with figure of lion. Gold ornaments enrich the beauty of the vase, which is suspended in an elaborately carved teakwood frame.

Height, 11 inches.



536 GREEN JADE BRUSH HOLDER

Wide cylindrical shape, beautifully carved in high relief from one block of moss-green jade of even color. The rocky landscape decoration shows trees, houses and figures. Carved teakwood stand. Height,  $5\frac{1}{2}$  inches. Diameter,  $5\frac{1}{2}$  inches.

537 CARVED JADE VASE

Dragons arising from the waves and playing with the sacred ball are carved in high relief, and undercut, surrounding the vase. Carved stand. Height,  $8\frac{1}{2}$  inches.

538 CARVED STONE ALBUM WEIGHT

A howling lion on a rectangular base holding a ball in his mouth from which a metallic sound issues when the ball revolves. Height,  $5\frac{3}{4}$  inches. Length,  $8\frac{1}{2}$  inches.





539 BEAUTIFUL JADE VINEYARD

Grape vines bearing fruit, and other fruits and leaves overhanging the chrysanthemum and tea flowers. All fruits, flowers and leaves are carved from Fei-'tsui jade, amethyst, coral and other semi-precious stones. The back is fenced by lattice in metal work. Rectangular pot of cloisonné, inlaid with birds and flowers. Carved teakwood stand. Fitted with electric light. Height, 19 inches.

540 BEAUTIFUL JADE FLOWER GARDEN

Companion to preceding.

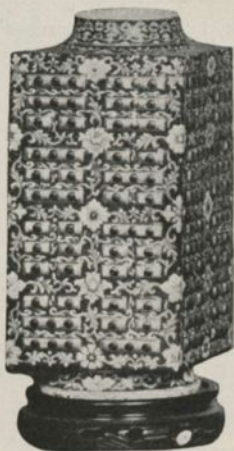
## A COLLECTION OF DECORATED PORCELAINS

Lots 541—571

- 541 DECORATED VASE YUNG CHÊNG  
Pear shape three-color decoration, with a dragon in green, red and yellow. Teakwood stand. Height,  $3\frac{1}{4}$  inches.
- 542 PORCELAIN SWEETMEAT BOX TAO KUANG  
Box and cover surrounded by wide black band on which are designs of flowers in rouge-de-fer, and scrolls in gold. On top of cover is a circular panel left white and decorated in gold with flowers and birds. Square mark in red on turquoise field. Teakwood stand. Height, 4 inches.
- 543 TEMPLE JAR YUNG CHÊNG  
Red and pink peonies on a green ground. Cover is surmounted with Fei-'tsui jade. Teakwood stand. Height,  $9\frac{1}{2}$  inches.
- 544 BEAKER VASE K'ANG-HSI  
Chrysanthemum and scroll decoration in red. Band of a geometrical design at the lip base. Teakwood stand. Height,  $9\frac{1}{2}$  inches.
- 545 IMPERIAL VASE CH' IEN-LUNG  
Graceful oviform, with long flaring neck. Pomegranates and evening glory vines beautifully painted on deep rose background, with minutely etched vine scroll. Teakwood stand. Height, 14 inches.
- 546 ENAMELED PORCELAIN VASE TAO KUANG  
Beaker shape, with oviform body and handles at neck. The whole surface is covered with a light blue enamel ground and decorated with conventional floral scrolls and in different enamel colors and gold. The Imperial Tao Kuang mark in gold on light blue base. Teakwood stand. Height, 12 inches.
- 547 PORCELAIN PANEL CHIA CH'ING  
Decorated in strong enamel colors with scene of the garden of the immortals. Teakwood stand. Height,  $16\frac{1}{2}$  inches. Width,  $11\frac{1}{2}$  inches.

- 548 FIVE-COLOR VASE YUNG CHÊNG  
 Conical shape, with narrow neck and spreading mouth. Decorated with aster design in various colors and green stems. Teakwood stand. Height, 10¼ inches.

- 549 PEAR SHAPE VASE K'ANG-HSI  
 The white glaze is of fine texture and decorated in rouge-de-fer, green and gold, with the famous art motive of squirrels stealing grapes. Diaper bands and ju-i scepter heads complete ornamentation. Teakwood stand. Height, 9½ inches.



550



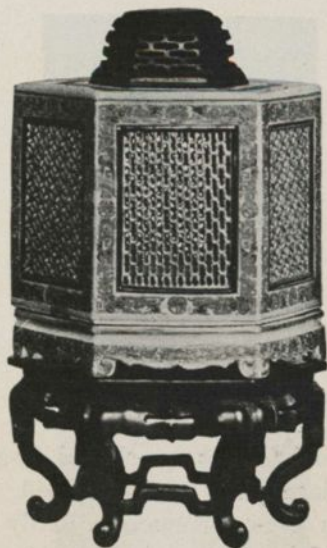
551

- 550 ENAMELED PORCELAIN VASE CH'IEN-LUNG  
 Square shape with rounded foot and neck. Covered with a deep Rose-du-Barry glaze on which are painted in various enamel colors flowers and leaves. On each of the four sides are the different diagrams of Pa-Kwa, on raised gold ground. Unusual piece. Teakwood stand. Height, 8½ inches.

[SEE ILLUSTRATION]

- 551 FAMILLE NOIRE JAR AND COVER YUNG CHÊNG  
 On a ground of black enamel glaze are scroll designs in green and various flowers in famille rose colors. Original cover similarly decorated. Teakwood stand. Height, 7½ inches.

[SEE ILLUSTRATION]



552 UNIQUE BUTTERFLY CAGE

CH' IEN-LUNG

Hexagonal shape, with pierced panels of fret work. Borders decorated with Shou mark and conventional designs in gold and red. Original base forming stand is also decorated in gold and red. Teakwood cover, with jade inset and stand.

Height, 7½ inches.

553 IMPORTANT CYLINDRICAL JAR

K'ANG-HSI

Brilliant white porcelain covered with green speckle-work on which are thrown flowers, in various enamel colors. Six irregular shaped panels are left white and decorated with landscapes, animals and flowers in famille-verte colors. Teakwood stand and cover. Rare specimen of the period.

Height, 9 inches

554 FAMILLE-VERTE JAR

K'ANG-HSI

Ovoidal shape. On a pure white ground are four panels, decorated in brilliant polychrome enamels of unusual depth. In two panels are emblems representing the "hundred antiques," in the other two decorations of various flowers, rocks and butterflies. Above the panel is a speckled green field relieved by flowers and at the lip and foot of jar are conventional flower bands. Teakwood stand and cover.

Height, 6½ inches.



555 WRITER'S WATER DISH

MING

On a white ground are two five-clawed dragons chasing among flowers and foliage after the flamed ball. The decoration is executed in rich five-color enamels, partly over, partly under the glaze. The Wan-li mark is incised and surrounded by a blue double ring. Teakwood stand and cover. A beautiful specimen of the Wan-li period.

Height,  $2\frac{3}{4}$  inches.



556 RARE EGGSHELL VASE

CH' IEN-LUNG

Conical shape, with short neck. The eggshell body is invested with a rich ruby-red glaze, which is covered with a tracery of flowers in gold. Two panels are left white, and decorated in famille rose colors with ladies and boys in a garden. A very fine specimen of delicate beauty. Teakwood stand.

Height, 9 inches.



- 557 KU YÜEH HSÜAN BRUSH HOLDER. CH'IEN-LUNG  
Very important Ku Yüeh Hsüan specimen. Porcelain of "white of egg" glaze, known to be produced only by this eminent artist, and decorated in delicate enamel colors with rocks, flowers and insects. The design is executed with minute skill and every detail shows the master hand of Ku Yüeh Hsüan. Teakwood stand. Specimens of this kind rarely leave the Orient, and this particular piece has been obtained under great difficulties from the Chargé d'Affaires in the Chinese Legation at Yokohama. The original box, with markings of the former owner, will be furnished to the buyer. Height, 6 inches.



558 TALL DECORATED VASE

MING

Bottle shape, with garlic lip. The body is decorated in three colors of richest tone on brilliant white ground. The blue and red is underglaze, the green is enamel. Decoration of conventional lotus design. Around the neck is a network design with ju-i heads and the garlic-shaped lip has raised decoration of lotus petals in blue and red. Teakwood stand. Very rare specimen of the Wan-li period. Height, 17 inches

*Formerly in the collection of Lord Charteris.*



559 PAIR FIVE-COLOR JARS AND COVERS MING  
 Spiral fluted jars, with lotus-shaped top. Famille-verte decoration with blue under the glaze. The flowers are in red, blue and yellow and aubergine, the foliage in green. Original cover, lotus shaped, decorated with blue and red. These jars are fully described and illustrated by Gulland (504) and are said to come from the duplicates of the Grandidier collection. Teakwood stands. Height, 12½ inches.

560 UNIQUE BOWL YUNG CHÊNG  
 Deep shape, decorated in famille-rose with design of peonies and prunus, between two bands of various brocaded patterns. Inside center of bowl shows peonies. Decoration is executed in the best Yung Chêng style. Elaborately carved teakwood stand, in form of lotus flower. Diameter, 10 inches.





561 TALL FAMILLE-VERTE VASE

K'ANG-HSI

Graceful oviform shape, with high rounding shoulder and spreading lip. On one side is, in a large panel, a court scene. The emperor, seated, is surrounded by court ladies and is receiving a visitor to whom tea is being served by a young woman. The other side shows a vigorous design of a large pine tree, rocks and clouds. On the shoulder is a diaper band and at the neck a landscape design. The whole decoration is executed in strong famille-verte colors. Teakwood stand.

Height, 17 inches.



562 FIVE-COLOR TEMPLE JAR

MING

Painted in rich enamel colors in combination with under-glaze cobalt. An emperor surrounded by court ladies and his male entourage, is represented in a garden scene. A fret border towards the narrow neck of the jar. Hall mark in blue double ring. Teakwood cover and stand. Excellent specimen of Ming "five color" porcelain. Height, 10½ inches.



563 PAIR FIVE-COLOR VASES

K'ANG-HSI

Cylindrical shape with bulging shoulders. The body is decorated with the figure of a Chinese sage with his horse, and a landscape design. Around the shoulder is a floral band in famille-verte. Painter's seal on vase signifies high quality of porcelain. Teakwood cover and stand. Height, 9 inches.



564 IMPORTANT FAMILLE-VERTE JAR AND COVER

K'ANG-HSI

Slender oviform shape. Brilliant cream-white porcelain. The body part is divided in four panels, each being decorated with court ladies and emblems signifying a Chinese woman's duties. The panels are surrounded by a trellis band. At foot are four famille-verte panels, containing flowers and surrounded by a famille-noire decoration. At shoulder a green speckle ground with flowers and relieved by four panels with mythological animals. At neck palm leaf design. Original cover with flower decoration and rouge-de-fer border. The decoration is executed with all the richness of the famille-verte palette. Teak-wood stand.

Height, 20¼ inches.



565 IMPORTANT JARDINIERE

K'ANG-HSI

Deep shape. Decorated in rouge-de-fer with flower motifs and wide band of ju-i scepter heads. Around top a border of green speckle ground with flowers and panels in famille-verte colors. At foot a band of geometrical design. A very fine specimen. Teakwood stand.

Height, 16 inches  
Diameter, 16½ inches.



566 IMPORTANT FAMILLE-VERTE PALACE JAR

K'ANG-HSI

With its original hat-shaped cover. Of dense sonorous hard paste and elaborately decorated in the brilliant enamel colors with touches of gold of the best period of the reign of K'ang-hsi. The embellishment consists of numerous reserve panels, which are outlined with purple and decorated in enamel colors, including emerald-green, yellow, blue, vermilion, red and black, with landscape views, river scenes, equestrian and other figures. The intervening spaces are covered with butterflies and various flowers, executed in brilliant enamels on a translucent green ground speckled with black. The neck and cover are decorated to harmonize with the predominating embellishment. Has wood stand. Slight repair at lip.

Height, 23 inches.

Diameter, 13½ inches.

*Formerly in the William C. Oastler Collection.*



- 567 IMPORTANT TEMPLE JAR MING  
 Large ovoid body with short neck. Cranes in a lotus pond carved in relief in thick yellow enamel on a deep blue ground. Teakwood cover and stand. Height, 12½ inches.

- 568 MAGNIFICENT TEMPLE JAR CH' IEN-LUNG  
 Flat globular shape with exquisitely carved decoration in high relief of chrysanthemums and peonies in detached clusters, painted with gold on ground of monochrome blue enamel glaze. Side handles are small turtles, symbol of longevity, beautifully carved, true to nature. Teakwood stand and cover. Height, 9 inches.

*Formerly in the J. H. Webster Collection.*

- 569 FIVE-COLOR TEMPLE JAR MING  
 Famous decoration of life in water, with fishes, shells, sea weeds, etc., in famille-verte on hard paste white porcelain. Teakwood cover and stand. Height, 13 inches.

- 570 LARGE DECORATED BOTTLE CH' IEN-LUNG  
 Entire body decorated with blue, leaving white outlines and forming a wave design. A number of sea dragons in rouge-de-fer chasing after the sacred pearl. Height, 24 inches.

571 MAGNIFICENT IMPERIAL THRONE SCREEN

K'ANG-HSI

Fivefold, of heavy Chinese teakwood, beautifully mellowed by age. The elaborate pierced carving forms the frame for thirty-five porcelain panels, twenty large and fifteen small ones. These panels, round and square, are decorated with rich enamel colors showing court scenes, flowers, and animals and are of the finest quality of the K'ang-Hsi period. Each plaque represents a valuable work of art and, arranged as they are here, give the screen a grandeur which hardly could be surpassed.

Height, 73 inches. Length (straightened), 83 inches.

[SEE ILLUSTRATION]





大吉